

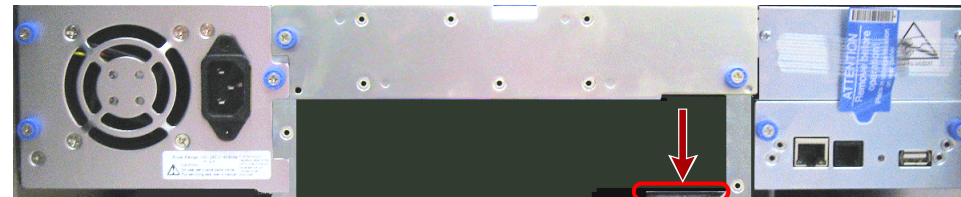
NEOs™ T24
2U Tape Library



Step 1

It is **essential** that you activate your warranty. Technical and warranty support are **not available** until the warranty is active.

The serial number is located on the pull-out tab at the rear.



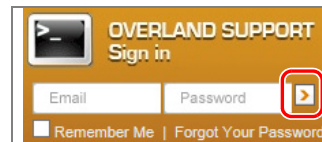
Enter only the core characters skipping the parenthesis, "PN:", and "SN:" components.

Example: 11S00V7150Y1N1B78X9938



For an existing customer:

1. Go to <http://support.overlandstorage.com/> support page.
2. Enter your **e-mail address** and **password** in the appropriate fields, and then press **Enter** or click the right arrow (>).
3. At the Support Home page, click **Register New**.
4. Enter the requested information and click **Submit**.



Your warranty certificate will be emailed to you. Follow the instructions in the email to complete the process.

For a new customer:

Go to the **New User Registration** page and follow the instructions.

You'll receive a confirmation e-mail from Overland with instructions on how to complete the registration process.

Step 2

WARNING: Due to the weight of the appliance, it is recommended that at least two people be used to lift the unit out of the box to prevent injury.

WARNING: Um Verletzungen zu vermeiden, empfehlen wir aufgrund des Gewichts des Geräts, dass mindestens zwei Personen das Gerät aus der Verpackung heben.

AVERTISSEMENT: En raison du poids de l'appareil, il est recommandé d'utiliser deux personnes au moins pour soulever l'appareil hors de la boîte pour éviter les blessures.

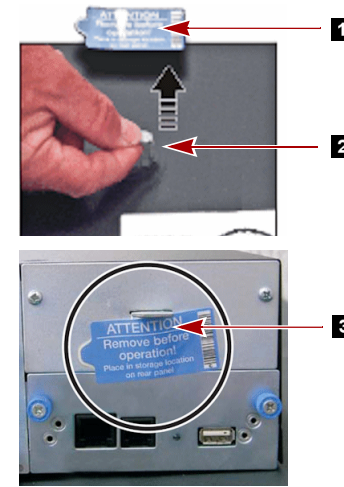
IMPORTANT: The shipping lock, which prevents the library accessor from moving during shipment, **must be removed** before the library is powered ON.

NOTE: If the temperature in the room where the library will be installed varies by 15° C (30° F) from the room where the library was stored, allow the library to acclimate to the surrounding environment for at least 12 hours before unpacking it.

The shipping lock is held in place with a label and is located in the top center of the library. After the shipping lock is removed, store it on the right side of the back panel for future use.

1. Using two people, remove the **library** from its box and set it on a secure surface.
2. Remove blue securing **label** (1).
3. Lift and remove the **shipping lock** (2).
4. Store the shipping lock and blue label at the top right (3) of the rear panel of the library.

Slide the lock into the slot with the bottom of the lock showing below the slot. Press the label over the flat part of the lock.



Step 3

The NEOs T24 libraries each come with a rack shelf kit for easy installation and securing of the library into a 19-inch (EIA-310) rack.

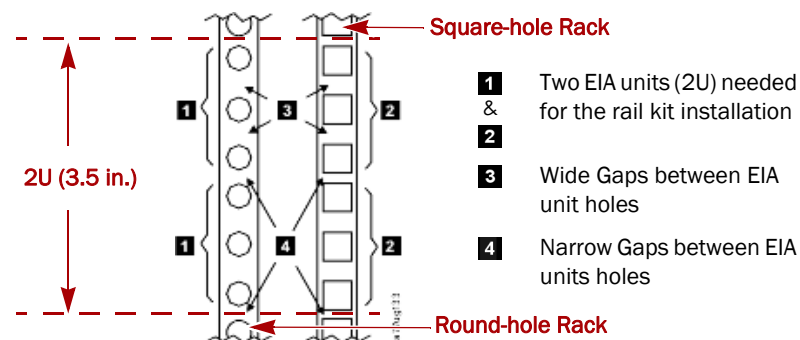
IMPORTANT: Two-post telco-style or other racks less than 29 inches in depth will NOT support this unit.

WARNING: It is recommended that a mechanical lifter (or at least two people) be used to raise and align the unit to prevent injury during installation. Use care when inserting or removing a unit into or out of a rack to prevent the accidental tipping of the rack, causing damage or personal injury.

WARNING: Um Verletzungen zu vermeiden, empfehlen wir zur Rack-Installation oder -Deinstallation die Nutzung einer mechanischen Hebehilfe (oder mindestens zwei Personen). Seien Sie vorsichtig bei der Rack-Installation oder -Entnahme, um ein versehentliches Kippen des Racks zu vermeiden und das Rack nicht zu beschädigen bzw. sich selbst zu verletzen.

AVERTISSEMENT: Afin d'éviter des blessures pendant l'installation, il est recommandé d'utiliser un monte-charge (ou au moins deux personnes) pour élever ou aligner l'appareil. Faites attention lorsque vous insérez ou retirez l'appareil d'un support, pour empêcher le déversement accidentel de la crémaillère causant des dommages et des blessures.

Install the Rack Rails



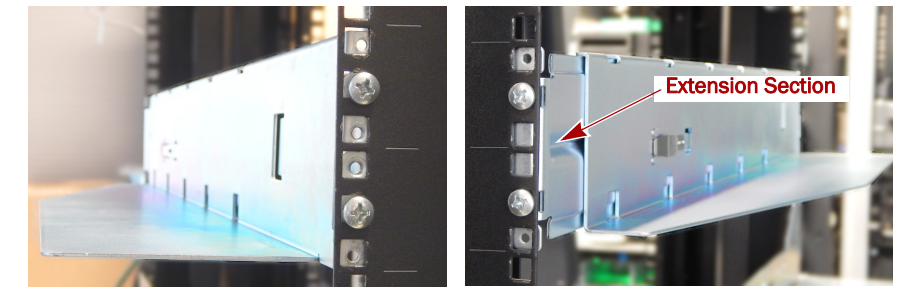
1. Determine the location in your rack for your library to be installed and, using a pencil, mark the location on each vertical rail in your rack, front and rear.

NOTE: A 2U library requires 2U (3.5 in.) of rack space. A 4U library requires 4U (7 in.) of rack space. Both units use the same rail kit.

2. Ensuring that the shelf flange on each rail points toward the rack center to form a shelf, secure one rail to **each side** of the rack at the bottom of your chosen rack location.

NOTE: The rail kit front and rear end brackets should face outward. The rails must be fastened with the bottom of the shelf flanges parallel to floor and at the same level.

- a. **Extend the rails** to fit your particular rack depth. Align the rail kit brackets at the bottom of the 2U space. The extension sections should be at the rear.
- b. Using either the square-hole or round-hole **eight screws**, secure the front and back of each rail to the rack. The screws go into the holes with the wide gaps above and below them.



Attach the Rail Brackets to Library

NOTE: The rail brackets attach at the bottom on both the T24 and the T48 libraries.

1. Position the **right bracket** on the right side with the notch in the library indent at the bottom and the two-holed flange to the front.



2. Use the **flat-head screw** in the top hole.
3. Use the **round-head screw** in the bottom hole.
4. Repeat these steps for the **left bracket**.

Insert the Library in Rack

1. Using the mechanical lifter, position the **library** in front of the rack, aligned with and slightly above the shelf flanges.
2. Slide the library onto the **shelves** until the mounting brackets are up against the vertical rack rails.
3. Secure it to the rack with the **two provided screws**.

Step 4

WARNING: To reduce the risk of electric shock or damage to equipment, always remove any power cords while working with the unit.

WARNUNG: Um das Risiko eines elektrischen Schlags oder Schäden am Gerät zu vermeiden, ziehen Sie stets den Netzstecker, bevor Sie an der Einheit arbeiten.

AVERTISSEMENT: Pour réduire le risque de choc électrique ou endommagement de l'équipement, retirez toujours les cordons électriques en travaillant avec l'appareil.

The half-height tape drive is installed at the rear of the library.

NOTE: Refer to the installation instructions and warnings that are packaged with the drive.

1. For the first drive, slightly pull out the **ID label pull-out tab** (3) so it does not interfere.
2. Slightly insert the **tape drive** into the lower drive bay while supporting the drive.
3. Push the tape drive all the way into the **drive bay** until it seats itself against the back of the library.
4. Tighten the **blue captive screws** with your fingers to secure the tape drive.
5. Push the **ID label pull-out tab** back into library.

If you have a second tape drive to install:

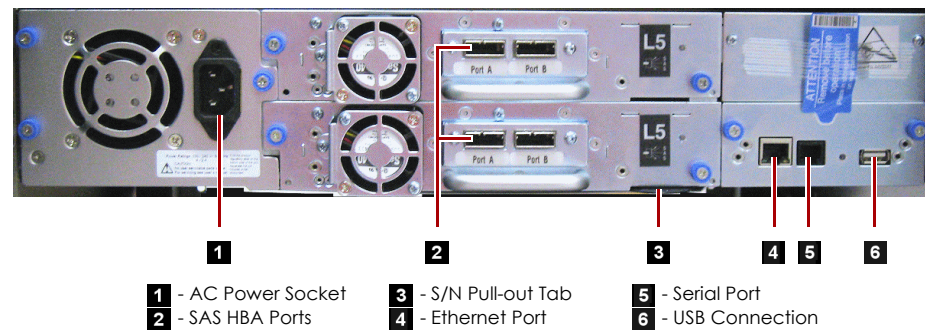
1. Remove and retain the top **drive bay cover**.
2. Slightly insert the **tape drive** into the upper drive bay while supporting the drive.
3. Push the tape drive all the way into the **drive bay** until it seats itself against the back of the library.
4. Tighten the **blue captive screws** with your fingers to secure the tape drive.

Step 5

Cable Attachment

CAUTION: It is recommended that you shut down and turn OFF the associated server. Turn OFF all attached devices. Remove the power cables from the server and all attached accessories. Failure to remove the power cords from these devices before connecting the host interface cable could result in damage to the library.

All cabling, power connections, and cooling are located on the NEOs T24 rear panel.



1. Attach one end of the **host interface cable** to the library:

- For a Serial Attached SCSI (SAS) connected library, attach one end of the SAS cable to Port A (left) SAS HBA (2) on the drive.
- For a Fibre Channel (FC) library, attach one end of the fibre cable to Port 0 (left) connector on the drive (not shown).

2. Attach the **other end** of the host interface cable as follows:

- For a SAS library, connect the host interface cable to the host HBA, using a direct SFF-8088 connection, or an interposer as required. Unused SAS connectors do not need termination.
- For a Fibre Channel library, connect the fibre cable to the host or to a switch.

3. Plug the **network Ethernet (management) cable** into the Ethernet port on the rear panel of the library. If the Ethernet connection is directly attached to a server or laptop, a crossover Ethernet cable may be required.

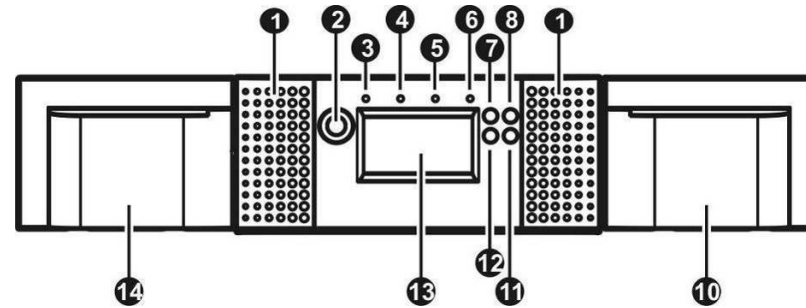
NOTE: It is the customer's responsibility to supply the crossover cable if one is required.

4. Plug the **power cord** into the AC power socket.
5. Press the **Power** button on the front just left of the LED screen.

Step 6

The library can be operated using either the Operator Control Panel (OCP) on the front of the device or remotely using the Remote Management Interface (RMI) web access.

Operator Control Panel



The OCP is the LCD screen located on the front panel (13), and displays actions and status information, menu items, and error messages equivalent to the operation mode. There are two modes:

- **User interaction mode** – This mode is employed when a user is pushing buttons on the OCP.
- **System driven mode** – This is the normal mode of operation where the OCP displays statuses associated with the actions resulting from commands issued from the host software application.

It is supported by four LEDs above the screen (3-6) and four buttons to the right (7, 8, 11, 12). Refer to the *NEO S-Series Tape Library User Guide* for complete details.

Remote Management Interface

Many of the same operations performed locally from the OCP can also be performed remotely using the network-connected RMI interface.

The RMI hosts a dedicated, protected Internet site that displays a graphical representation of the library. After establishing a network connection to the library, open any HTML browser and enter the IP address of the library.

NOTE: To access the RMI, you must first set the desired static IP address for the library using the OCP or configure the library to use DHCP.

Refer to the *NEO S-Series Tape Library User Guide* for complete details.

Step 7

Confirm Your Library Firmware Version

Before using your new NEOs library, it is highly recommended that you verify it is running the latest library firmware version:

1. At the **Startup Screen**, make a note of the firmware version.
2. Go to the Overland-Tandberg **Downloads and Resources** site:
<http://docs.overlandstorage.com/neo>
3. Under Downloads/NEO Series Firmware, click the **link** for the library.
4. At the FTP site, if newer, download the **firmware** and **Release Notes**.
5. Update the firmware using the *NEO S-Series User Guide* instructions.

Confirm Your Tape Drive Firmware

Refer to the installation instructions and warnings that are packaged with your tape drive to determine if the firmware is current or needs to be updated.

If you determine that the firmware needs to be updated, follow these steps detailed in the tape drive instructions.

Step 8

Additional information and support are available from Overland-Tandberg.

User Guides

For detailed information on configuring your NEOs library, refer to the *NEO S-Series User Guide* available online under Resources at:

<http://docs.overlandstorage.com/neo>

More information can be accessed from the Overland-Tandberg Knowledge Base:

<https://www.overlandtandberg.com/knowledgebase/>

Warranty and Technical Support

For warranty and general technical support information, see our **Contact Us** web page:

<http://www.overlandstorage.com/company/contact-us/index.aspx>

For information on contacting Overland-Tandberg technical support, see our **Contact Support** web page:

<http://docs.overlandstorage.com/support>

