

# Using RDX® QuikStation® and QuikStor® with Archiware® P5 Backup

INTEGRATION BRIEF  
**ARCHIWARE**

Archiware P5 Backup, in tandem with RDX Removable Storage, provides an easy off-site solution for small and medium businesses. In addition, the inclusion of rdxLOCK RansomBlock software helps shield your data from Ransomware attacks.

Many companies only recognize how valuable their data is once they've lost it. More than 80 % of companies that suffer a major data loss end up filing for bankruptcy within two years, based on a study in the US.

Setting up an automatic backup of your data is easy. Tandberg Data RDX and Archiware P5 Backup software provides automatic backup, including off-site storage of data, for professional security. Configuration and restore using the P5 browser web interface allows for flexibility and overview of the secured data.

## Overland-Tandberg RDX QuikStor drives and QuikStation appliances

The RDX QuikStor removable disk storage system offers rugged, reliable and convenient storage for backup, archive, data interchange and disaster recovery. RDX QuikStor is available as an external device with USB 3.0 interface and, attached to a desktop, laptop or server, is ready for immediate use. RDX QuikStor also comes as an internal drive with either a USB 3.0 or SATA III interface.

The RDX QuikStation iSCSI network-attached removable disk appliance is designed to provide a flexible platform for data protection and off-site disaster recovery for either physical or virtual SMB and SME environments. The RDX QuikStation family offers two models with either four or eight integrated RDX drives to fit varying capacity and feature requirements.

## Archiware P5 Backup Software

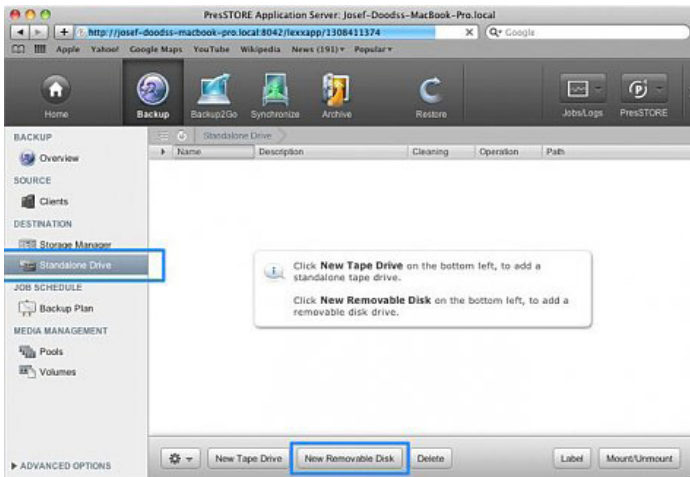
The combination of Tandberg Data's RDX and P5 Backup provides for automatic Workstation and Server backups. High security requirements are simple and inexpensive to implement with the rotation of media achieving maximum security for corporate data.

Three media – in use, in transit, and stored – guarantee that your data is never at risk of being in the same place.



## Using RDX with Archiware Backup

This following process describes how to setup a Archiware P5 Backup with a RDX standalone removable disk drive. To accomplish this, you need to setup automatic P5 labelling on the RDX. Before you can create any backup plans, you must also create the same unique label on each cartridge used in the backups.

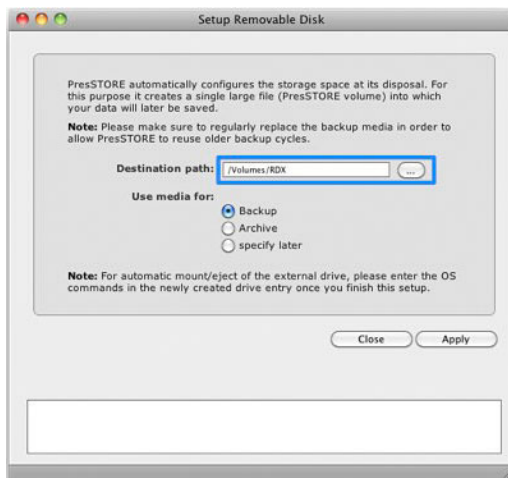


Using a web browser, log into the P5 web interface as an admin user.

Click **Backup** in the menu bar.

On the left, select **Standalone Drive**.

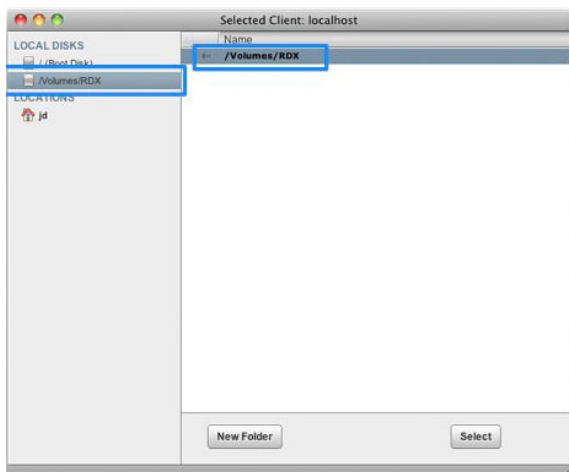
At the bottom, click **New Removable Disk**.



At the **Setup Removable Disk** dialog, for the destination path, browse to and select the **RDX volume** (use /Volumes/RDX).

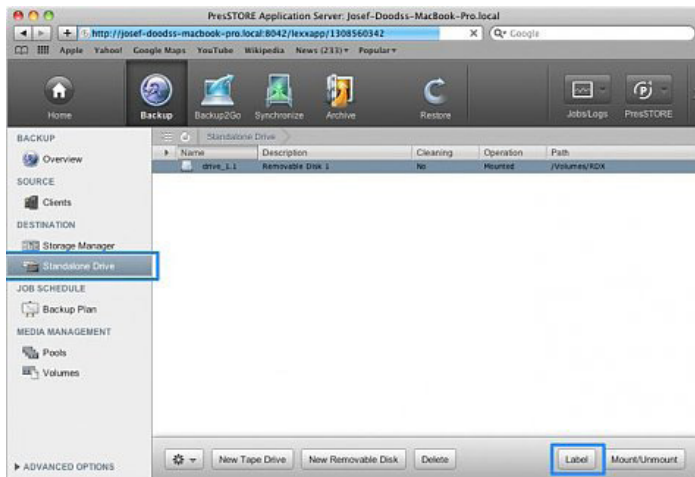
Verify that **Backup** is selected for media use.

Click **Apply**.



At the **Selected Client** dialog, select the same **volume name** on the left and then the **top entry** from the list.

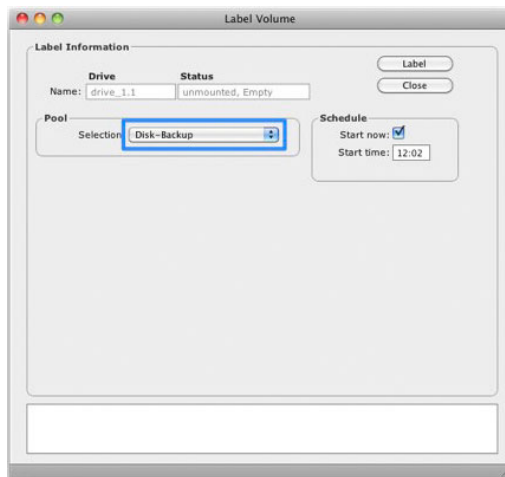
Click **Select**.



At the P5 web interface, if needed, click the **Backup** icon.

Verify **Standalone Drive** is still selected and the RDX is highlighted.

At the bottom, click **Label**.

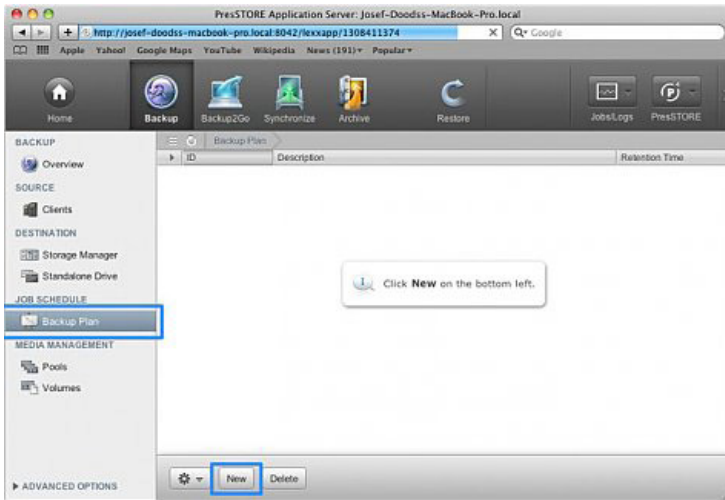


At the **Label Volume** dialog, select the **Disk-Backup** pool that was created by the automatic labelling process.

Click **Label**.

## Setup a Backup Plan

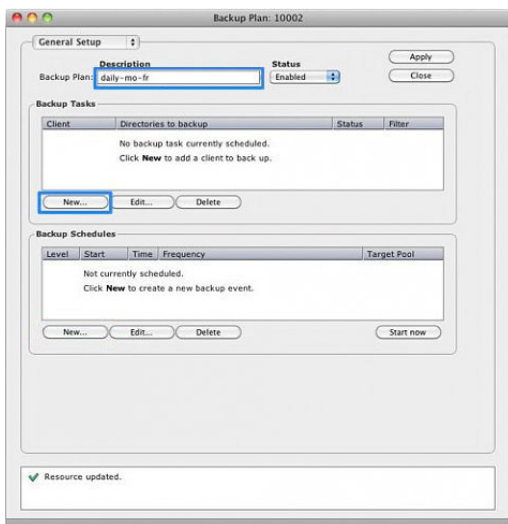
Use these steps to create and schedule your backups.



At the P5 web interface, click the **Backup** icon.

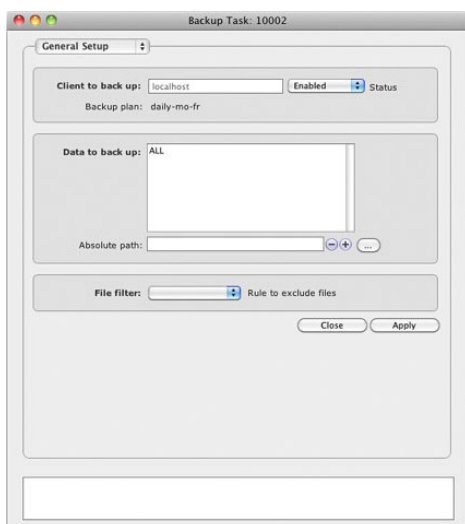
From the **left** menu, select **Backup Plan**.

At the bottom, click **New**.

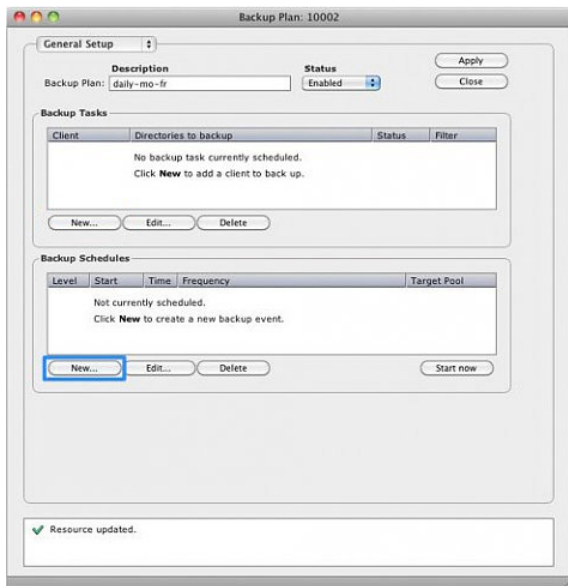


In the backup plan **Description** field, enter a unique plan name and click **Apply** at the top right.

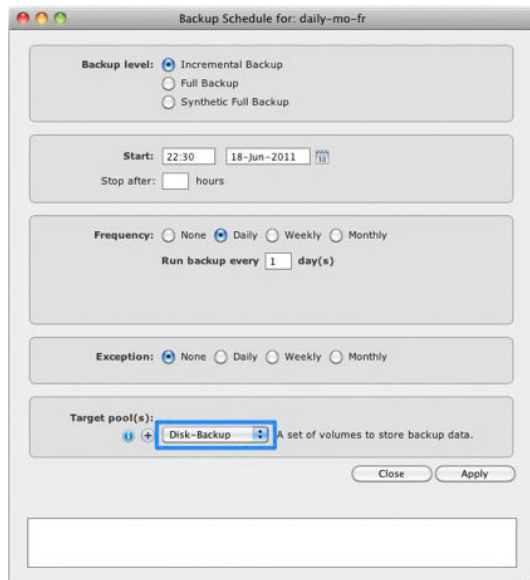
In the **Backup Tasks** section, click **New**.



Complete the appropriate settings on the **Backup Task** dialog and click **Apply**.



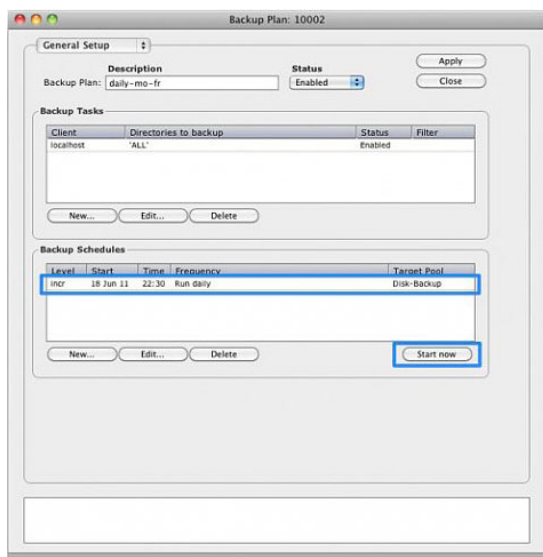
At the **Backup Plan** dialog, in the **Backup Schedules** section, click **New**.



Complete the appropriate settings on the **Backup Schedule** dialog.

For this example, use incremental backup starting at 22:30 daily every (1) day with no exceptions.

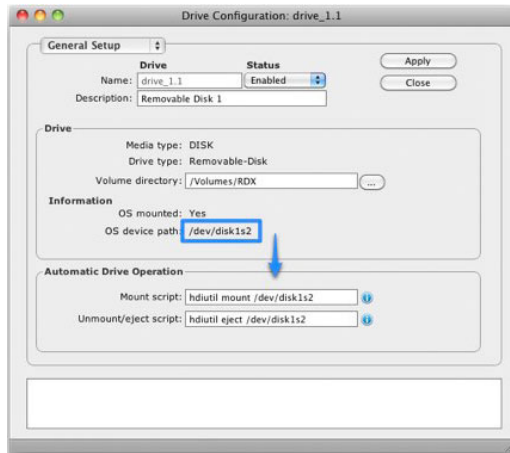
At the bottom, select the **Disk-Backup** and click **Apply**.



Be sure the new plan is selected in the **Backup Schedules** section and manually start it by clicking **Start Now**.

## Optionally Add Automatic Mount & Eject for RDX

For Mac OS X, use the “hdiutil” script commands to enable automatic mounting and ejection for the RDX drive.



At the **Drive Configuration** dialog, enter the following:

**Mount script:**

“hdiutil mount /dev/disk1s2”

**Eject script:**

“hdiutil eject /dev/disk1s2”

When done, click **Apply**.