

# Integrating RDX QuikStation into QNAP® NAS Backup

QNAP NAS Systems provide an OS built-in utility to secure business critical data. With the integration of Tandberg Data's RDX QuikStation removable media system, users can now implement a full disaster recovery protection solution or use it with QNAP's Virtualization Station for data protection.

All QNAP NAS storage systems offer data redundancy via RAID technology. RAID doesn't protect you from data losses and it should be regularly backed up to an external device to be protected against hardware failures or human errors. An easy to use built-in utility allows scheduled backups to USB attached devices like memory sticks or external hard disks.

However, these devices don't offer much reliability and durability, as they are not specifically designed for backup and archiving tasks with on/offline storage requirements. The RDX QuikStation removable storage system is a media-based rugged, reliable and convenient backup appliance with either four or eight RDX drives, which fits perfectly into a professional backup strategy. With its iSCSI connectivity, RDX QuikStation easily attaches into existing networks. Therefore, it can be shared across servers, but can also be used as a backup target for built-in backup utilities of QNAP NAS systems.

After the backup job has completed, the RDX QuikStation media can be ejected to be placed in a secure location. Another media should then be inserted for the next backup job. This media rotation scenario provides the best protection against data loss and unpredictable failures and disasters.

The following guide explains how to integrate a RDX QuikStation with a QNAP NAS system and how to schedule a backup job.

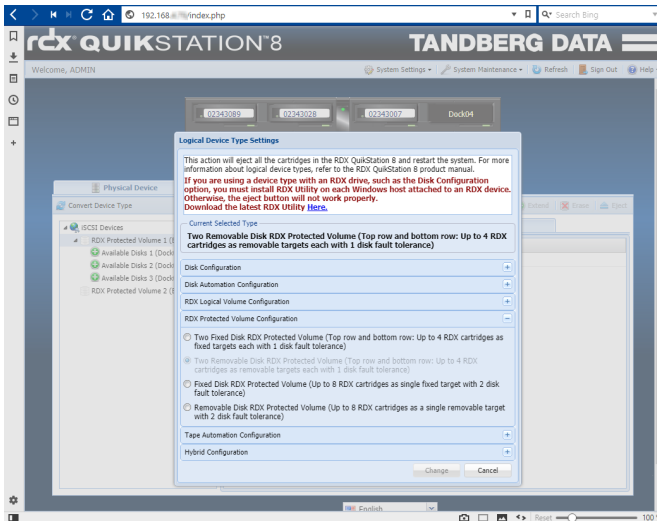


RDX QuikStation is an iSCSI-based flexible removable media appliance



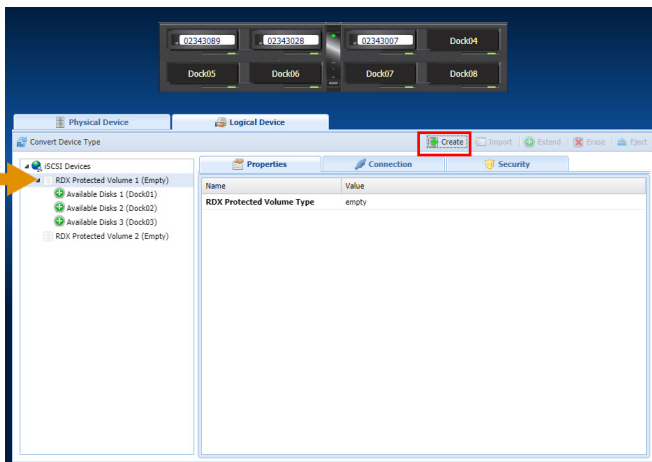
QNAP NAS systems provide integrated backup applications

## Create an RDX Protected Volume



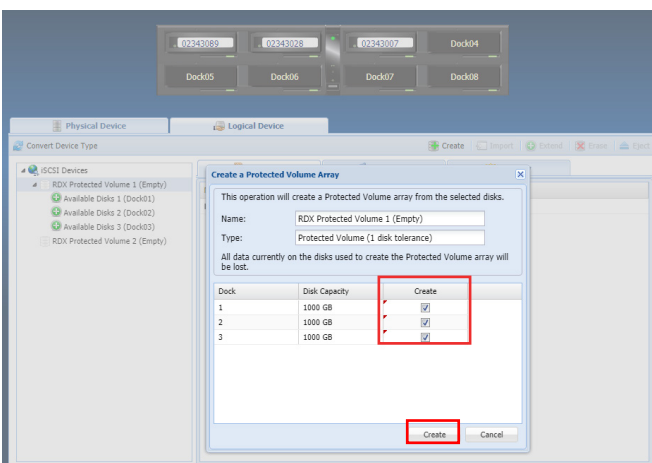
Configure your QuikStation 8 with two Removable Disk RDX Protected Volumes (top row and bottom row).

In this example, the top row (**Volume 1**) has three cartridges.

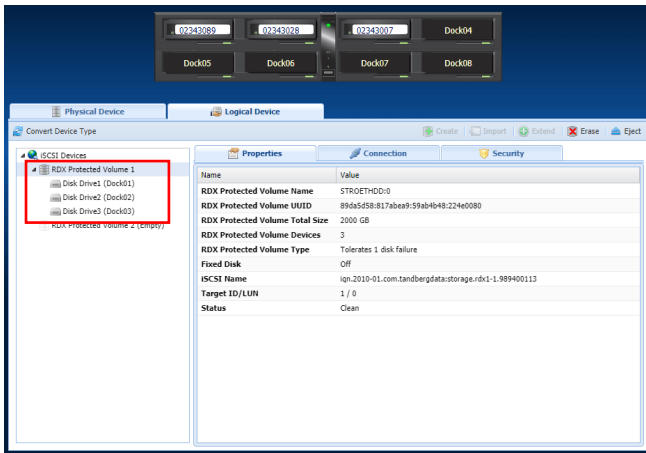


From the **Logical Device > iSCSI Devices** list, select **RDX Protected Volume 1**.

Click **Create** on the tab bar to configure a Protected Volume.



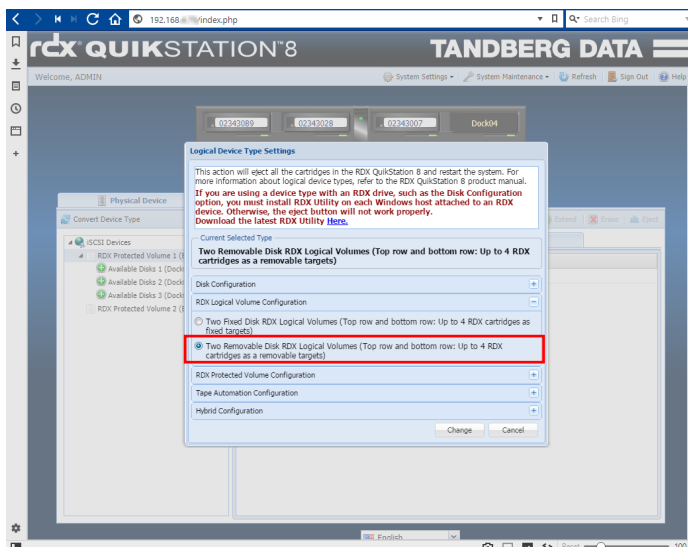
Select all three docks listed and click **Create** at the bottom.



The **Properties** tab now shows a Protected Volume made up of three devices.

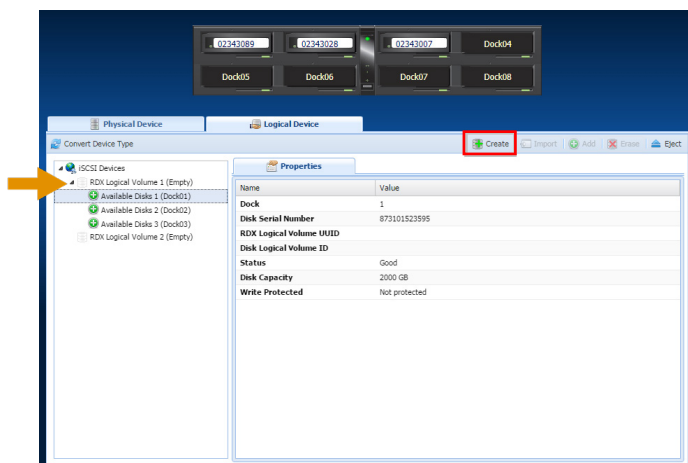
Continue with the **QNAP Configuration, Backup and Restore** section.

## Create an RDX Logical Volume



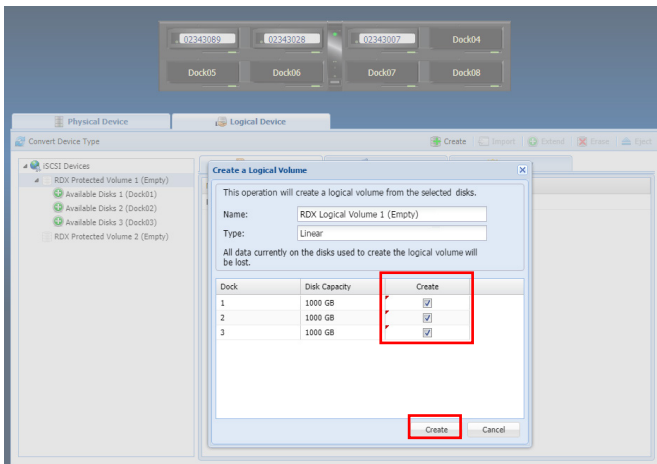
Configure your QuikStation 8 with two Removable Disk RDX Logical Volumes (top row and bottom row).

In this example, the top row (**Volume 1**) has three cartridges.

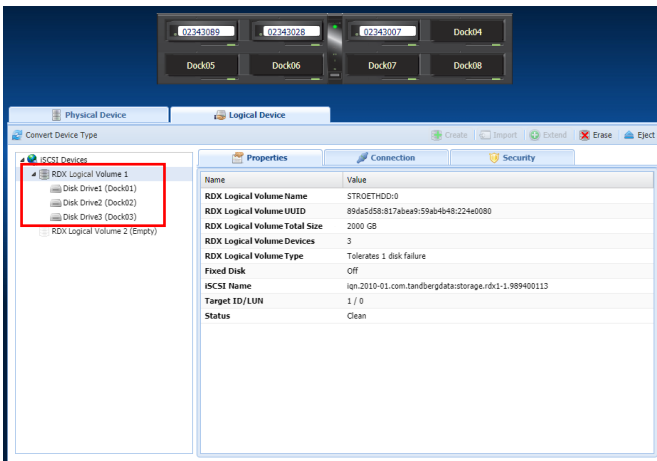


From the **Logical Device > iSCSI Devices** list, select **RDX Logical Volume 1**.

Click **Create** on the tab bar to configure a Logical Volume.



Select all three docks listed and click **Create** at the bottom.

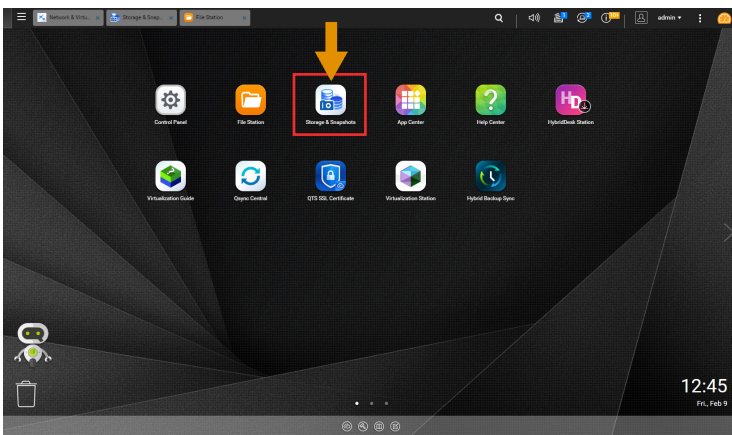


The **Properties** tab now shows a Logical Volume made up of three devices.

Continue with the **QNAP Configuration, Backup and Restore** section.

# QNAP Configuration, Backup and Restore

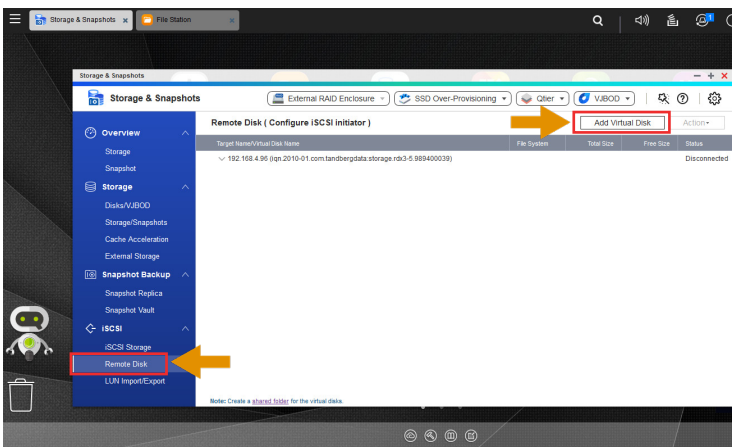
## Introduce RDX to QNAP NAS



Start your NAS system and connect your RDX QuikStation appliance to your network.

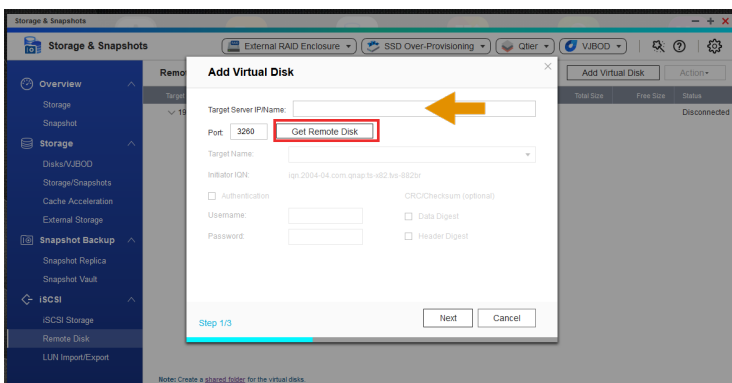
Insert RDX media into the QuikStation.

From the main QNAP menu, choose **Storage & Snapshots**.

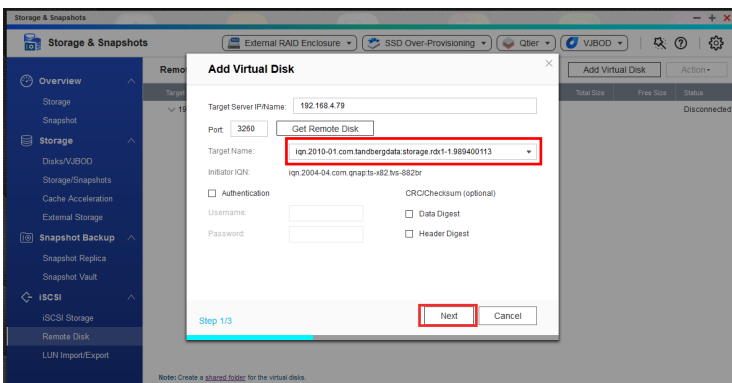


From the left-hand panel, choose **Remote Disk**.

At the top, click **Add Virtual Disk**.



At Step 1, enter the IP address of the QuikStation in the **Target Server IP/Name** field and click **Get Remote Disk**.

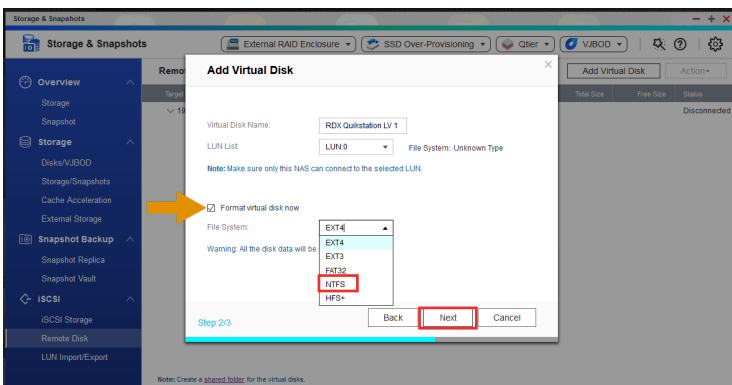


The QNAP system discovers all iSCSI targets of the QuikStation.

NOTE: Some targets might already be connected to other systems.

Click the arrow to open the drop-down list and select the desired drive.

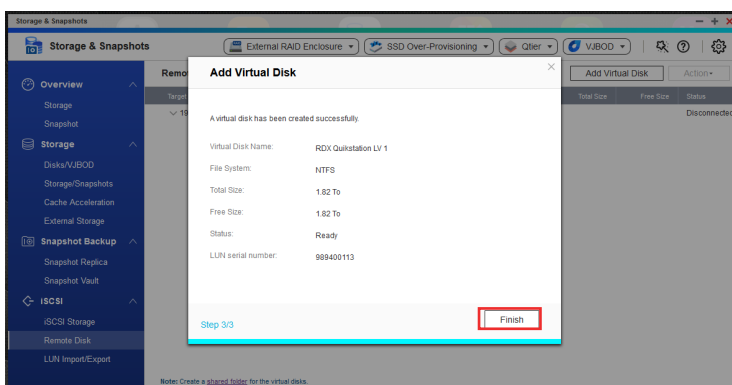
Click **Next**.



At Step 2, you can overwrite the default. We have used **RDx QuikStation LV 1**.

You might want to format the media. If that is the case, check the **Format virtual disk now** box and select **NTFS**.

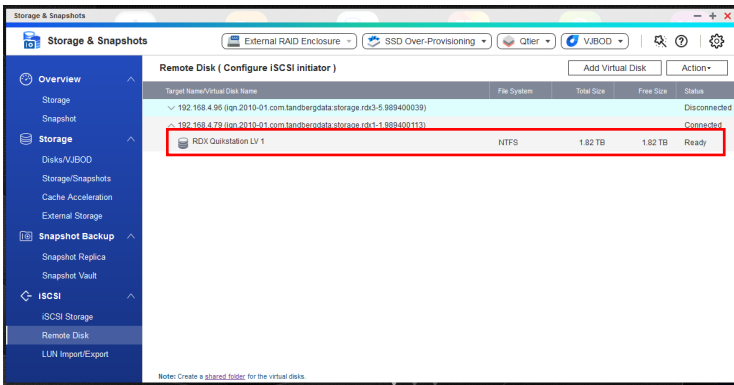
Click **Next**.



A summary screen is displayed.

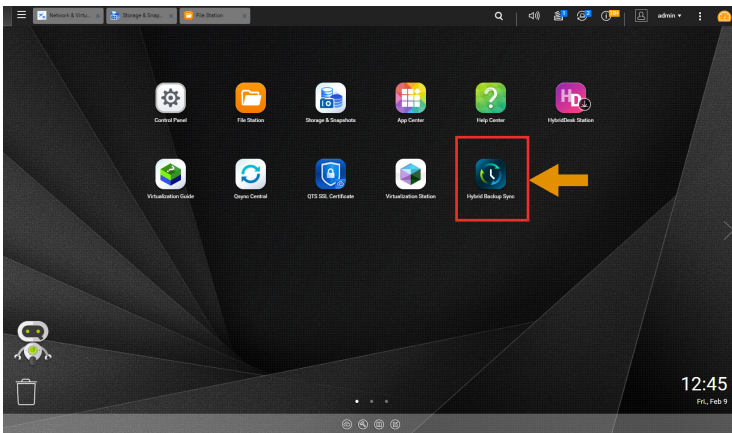
Click **Finish**.

The disk is now ready to use.

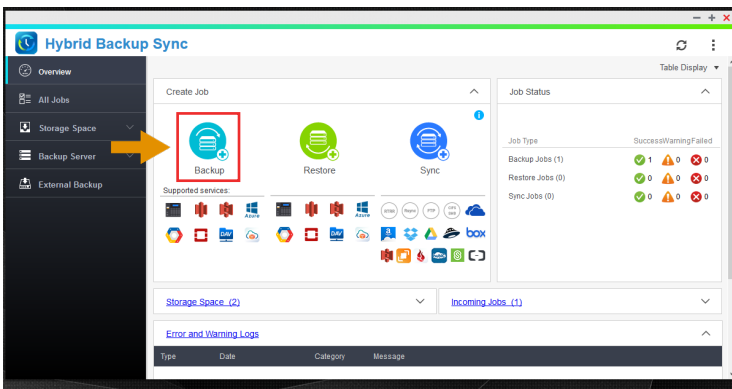


The disk is now ready to use.

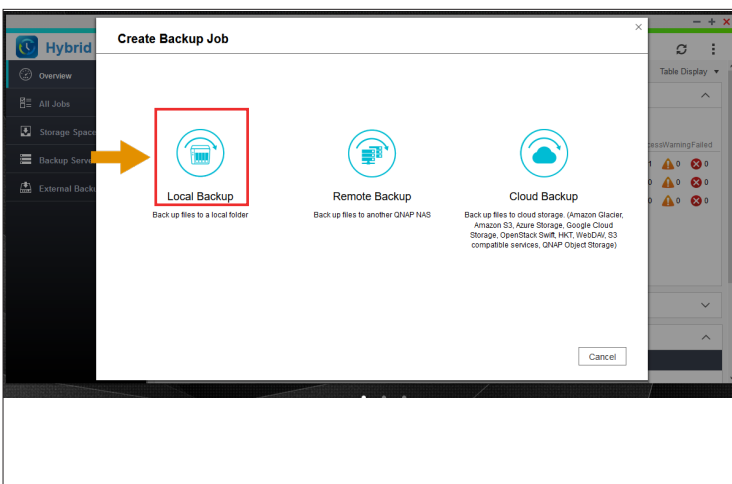
## Create a Backup Job to RDX



From the main menu, start **Hybrid Backup Sync**.

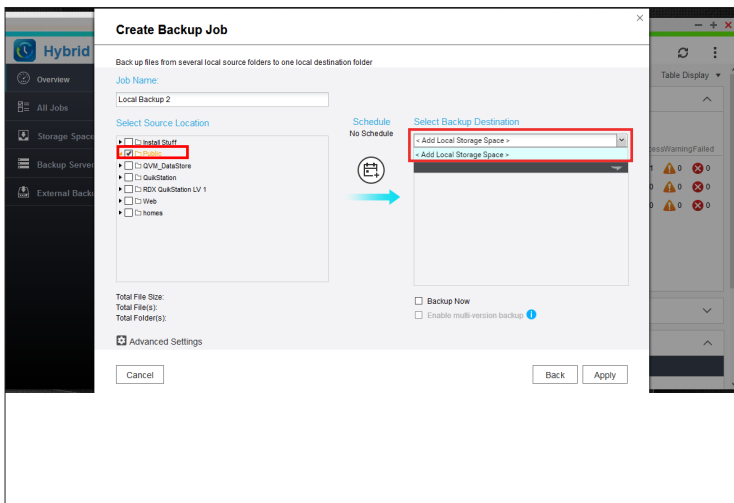


At the Hybrid Backup Sync screen, choose **Backup**.



As we want to backup to the locally attached RDX, choose **Local Backup**.



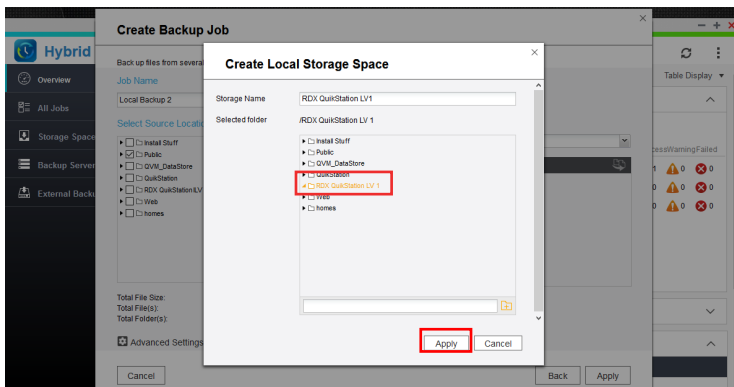


The job name is automatically assigned. (You can change it.)

Select the source location (**Public**) of the files you want to back up.

On the right, using the drop-down list, select the backup destination.

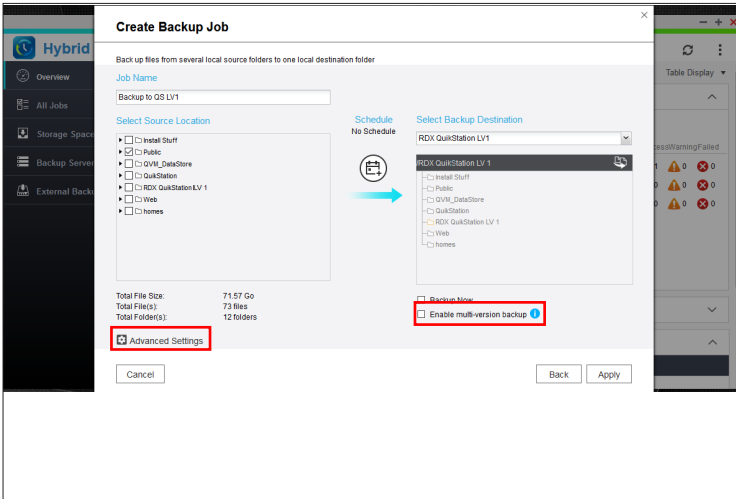
Initially, a local storage space needs to be added. Select **Add Local Storage Space**.



Select the desired storage space.

In our case, we will choose **RDX QuikStation LV 1** for the QuikStation RDX drive.

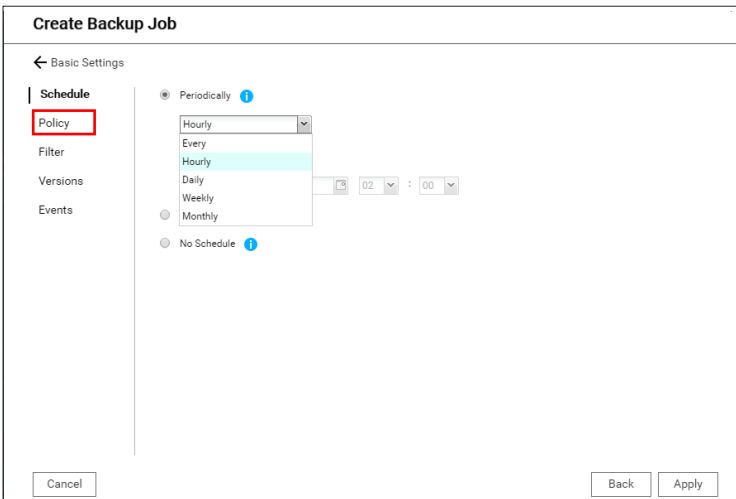
Click **Apply**.



The storage space is now assigned as the backup target.

Hybrid Backup Sync is able to keep multiple versions of your backup if you check the **Enable multi-version backup** box.

Select **Advanced Settings** to adjust the parameters of this backup job according to your needs.

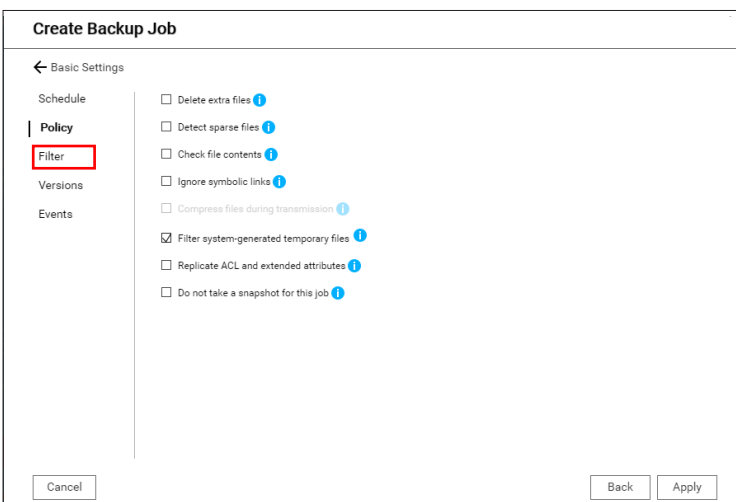


There are five options on the **Advanced Settings** screen.

**Schedule** lets you choose between minutely, hourly, daily, weekly, monthly or one-time backups.

Select your desired schedule, if any.

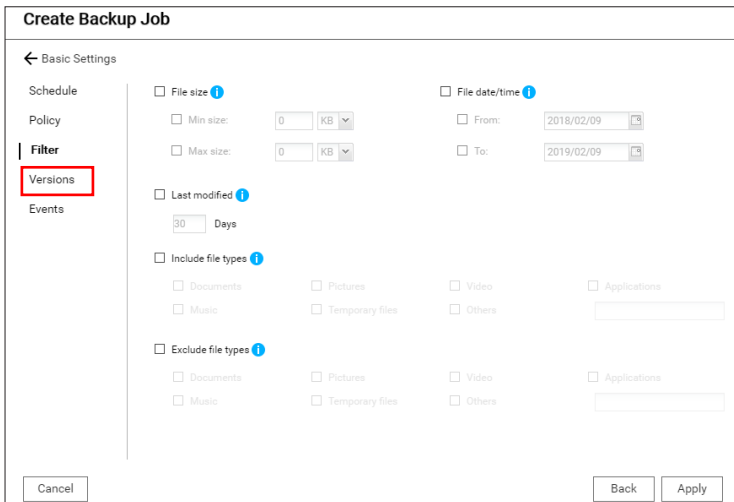
Then click **Policy**.



**Policy** lets you choose from several backup options.

NOTE: Hover over the information (i) symbol to get a brief description of an option.

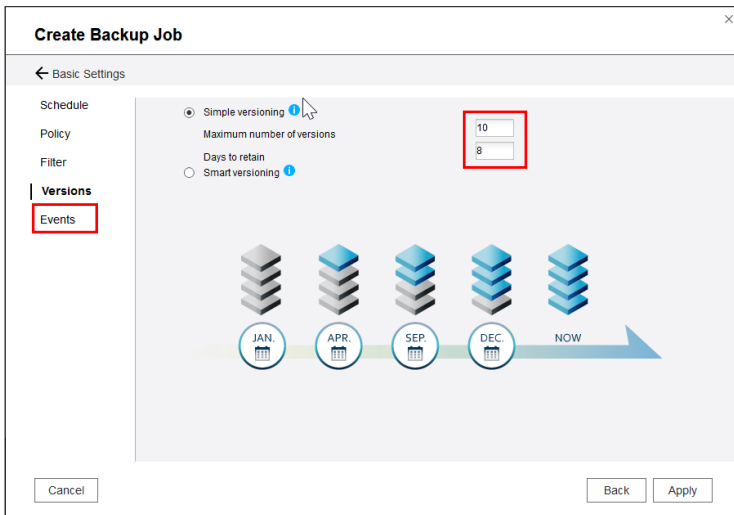
Then click **Filter**.



▶ **Filter** lets you filter the files being backed up according to their size, date or type.

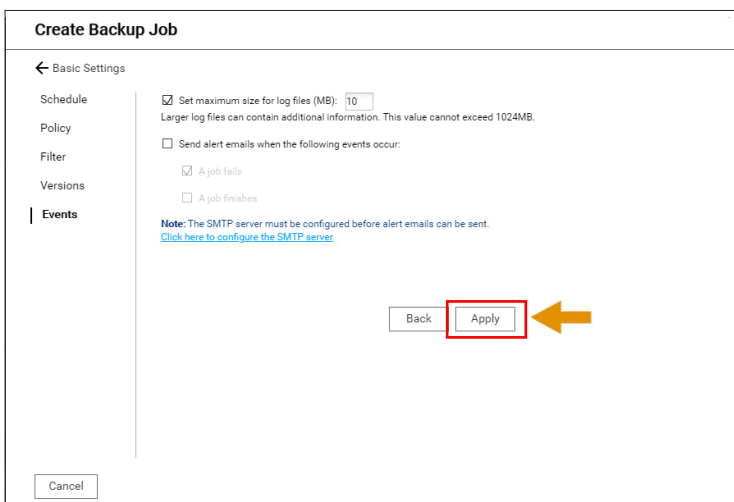
Select your desired filters.

Then click **Versions**.



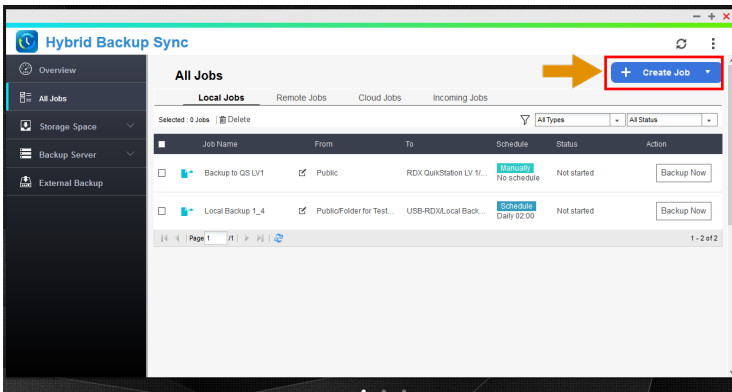
▶ If you checked the **Enable multi-version backup** box on the Basic screen, you are able to specify the number of backup versions you want to keep and the retention time.

Then click **Events**.



▶ **Events** lets you set the maximum size for log files and enables email notification.

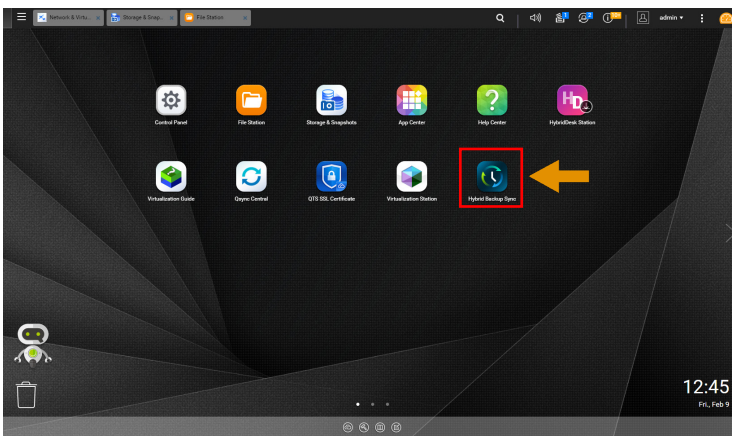
When done, click **Apply**.



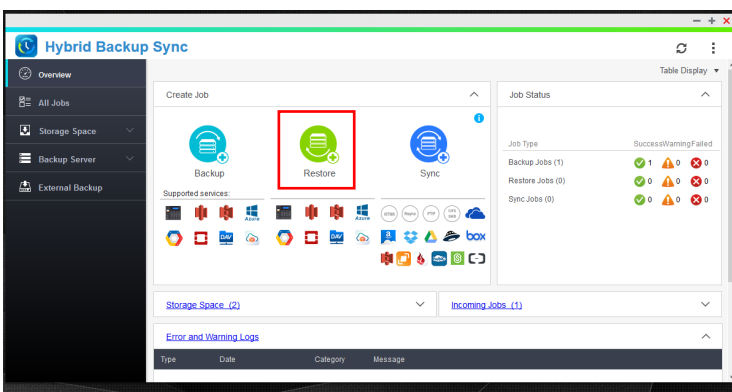
The backup job has been defined and will start according to the defined schedule.

To set up another job, click **Create Job**.

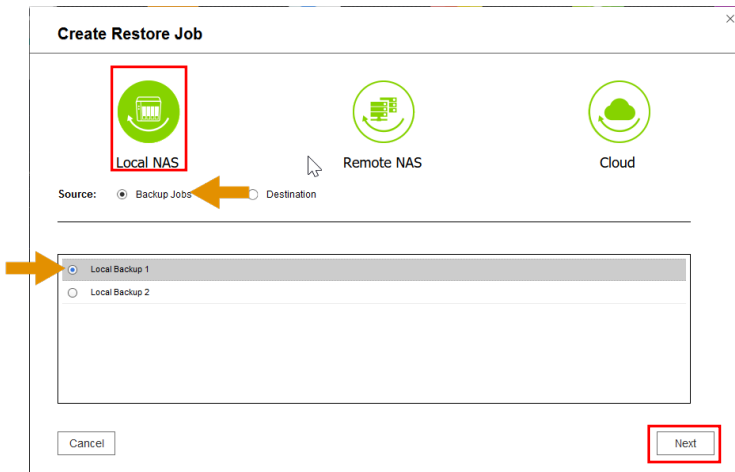
### Perform a Restore from RDX Media



From the main menu, start **Hybrid Backup Sync**.



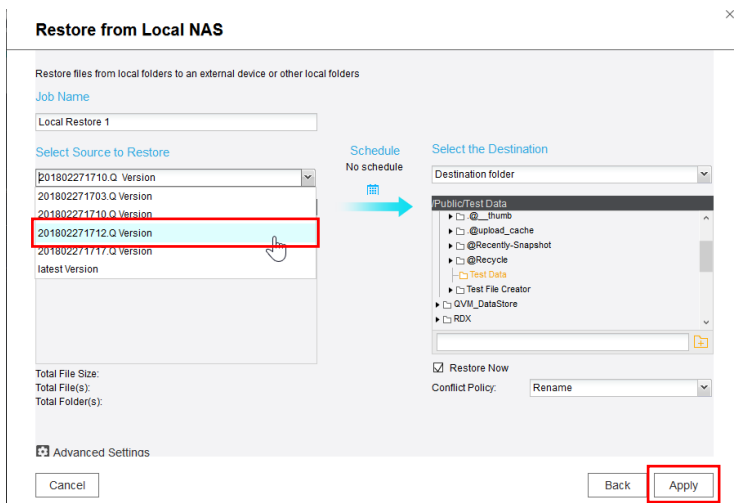
From the **Overview** menu, in the **Create Job** section, select **Restore**.



At the Create Restore Job screen, select the option **Local NAS** and the source **Backup Jobs**.

From the list of jobs, choose the backup job you want to restore.

Click **Next**.

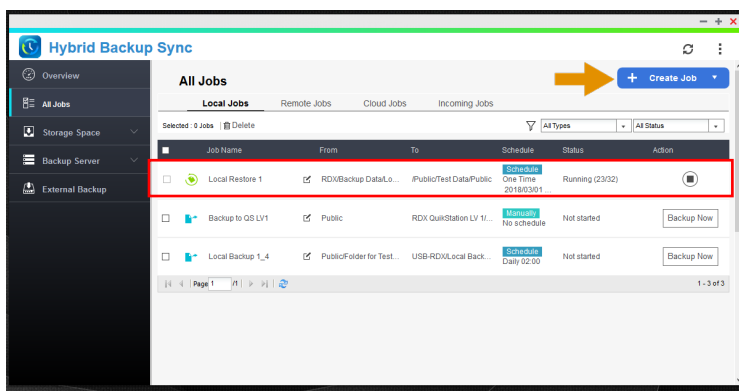


If you enabled multi-version backups, select the version of your backup; otherwise, select the latest version.

Select the folders you want to restore.

Then select the destination folder where you want the restore to go.

Click **Apply**.



The restore job will be displayed in the **All Jobs** overview window.

Further jobs can be created by selecting **Create Job**.