

INTEGRATION BRIEF

# NAS Backup

## Integrating RDX® QuikStor® into QNAP® NAS Backup

January 11, 2021



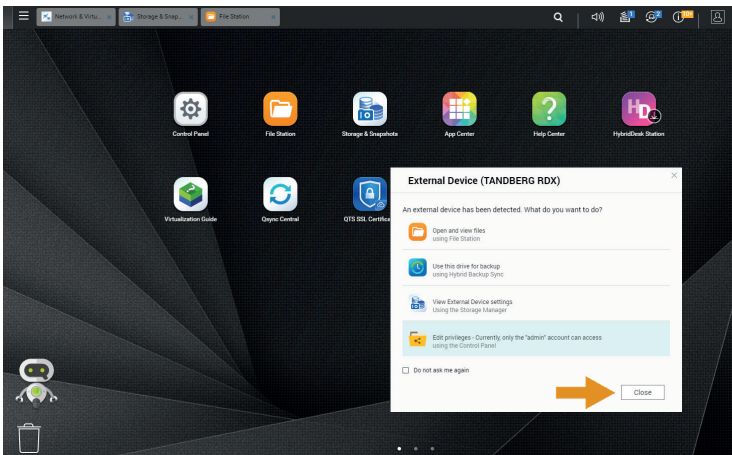
All QNAP NAS storage systems offer data redundancy via RAID technology. RAID doesn't protect you from data losses and it should be backed up to an external device to be protected against hardware failures or human errors regularly. An easy to use built in utility allows scheduled backups to USB attached devices like memory sticks or external hard disks.

However, these devices don't offer much reliability and durability, as they are not specifically designed for backup and archiving tasks with on/offline storage requirements. The RDX QuikStor removable storage system is a media based rugged, reliable and convenient backup appliance, which fits perfectly into a professional backup strategy. RDX QuikStor easily attaches to QNAP NAS system's USB3.0 port and is ready to go.

After the backup job has completed, the RDX QuikStor media can be ejected to be placed into a secure location. Another media should then be inserted for the next backup job. This media rotation scenario provides the best protection against data loss and unpredictable failures, disasters and malware attacks.

The following guide explains how to integrate a RDX QuikStor drive directly to a QNAP NAS system and how to schedule a backup job. In addition, this guide refers to the QNAP Virtualization Station and explains how RDX is assigned to virtual machines.

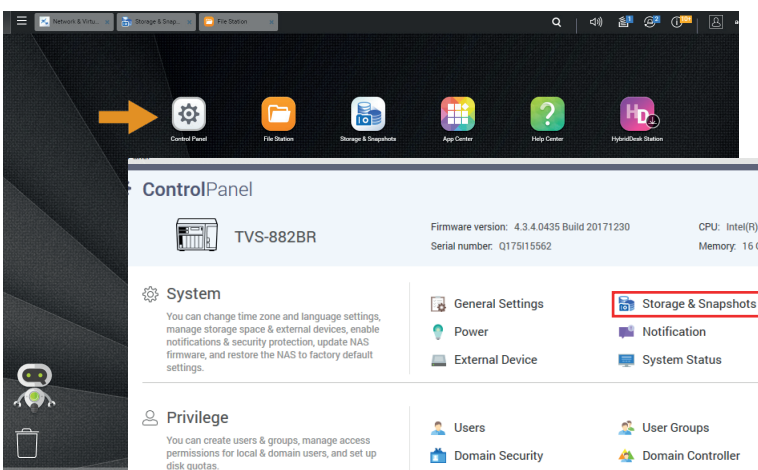
## Introduce RDX QuikStor to QNAP NAS



Start your NAS system and connect your RDX QuikStor drive to the USB 3.0 port at the back of your NAS system. Insert an RDX media into the drive.

There might start a popup window, offering some options.

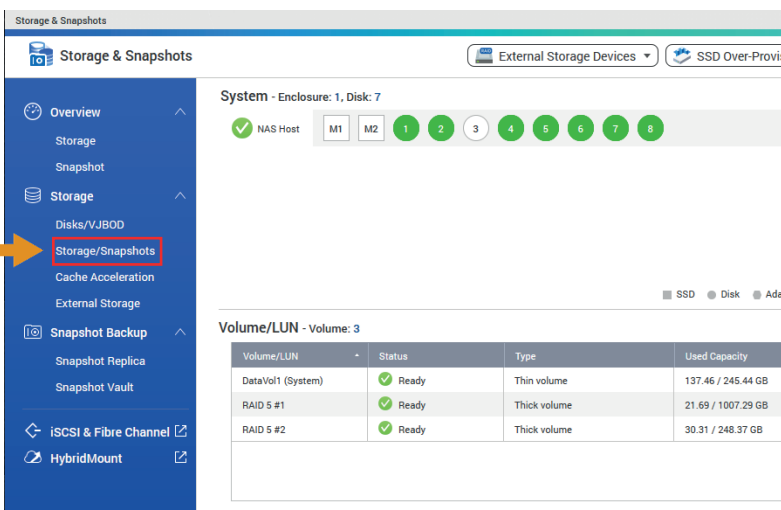
Click **Close**.



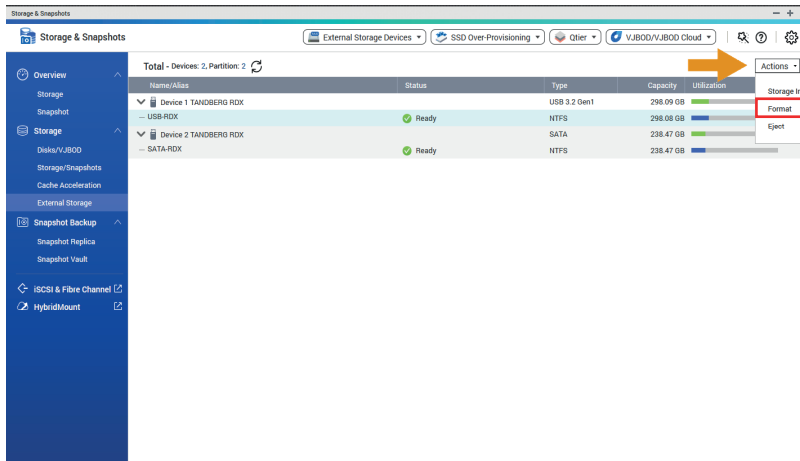
RDX media are preformatted with NTFS for Windows compatibility and are ready to use for backup. You might want to change this to EXT4 for maximum backup performance.

If you want to keep the NTFS filesystem, proceed to the next chapter!

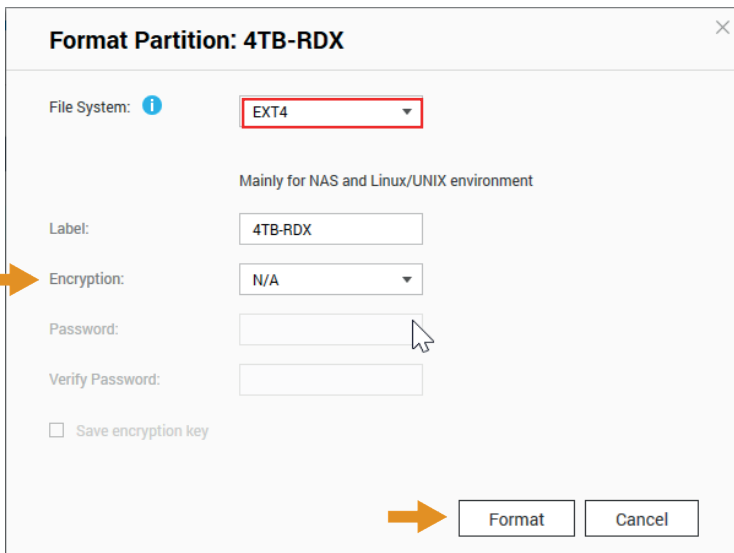
Otherwise click on **Control Panel** and choose **Storage & Snapshots**.



Choose **External Storage**.



All attached RDX drives are displayed. Select the desired drive and click on **Actions** and **Format**.



Choose the desired filesystem and enter a label. You might want to enable encryption to ensure that data on RDX media cannot be accessed during transport and off-site storage.

In this case, a password is required.

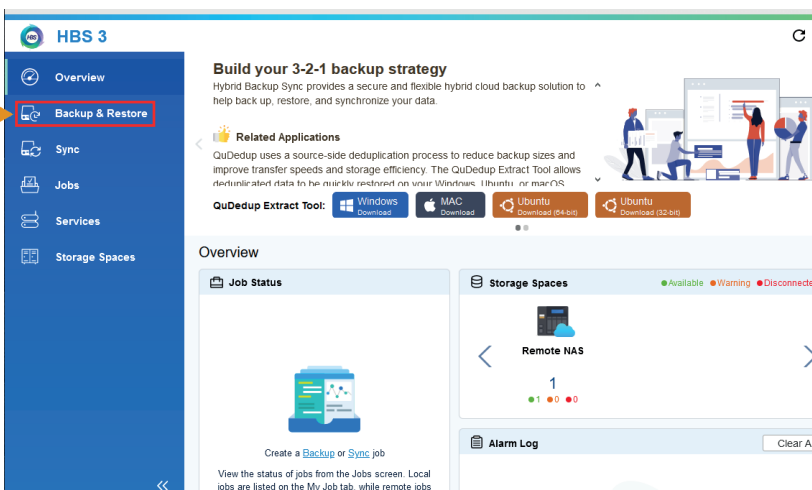
Click on **Format**.

The device is now ready to use.

## Create a Backup Job to RDX

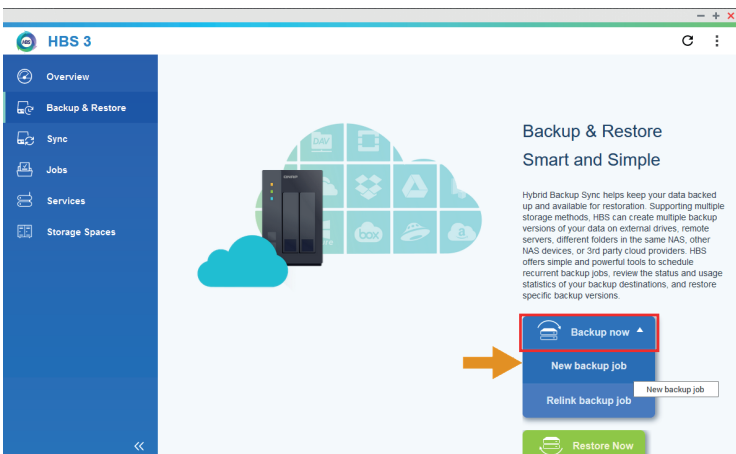


From the main menu, start HBS 3 Hybrid Backup Sync.



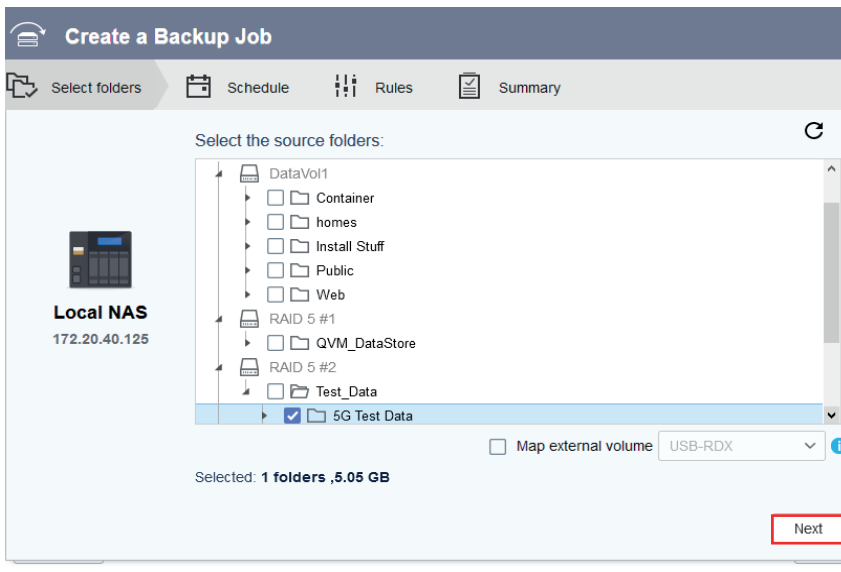
If you start HBS 3, the main screen appears.

Choose **Backup & Restore**.



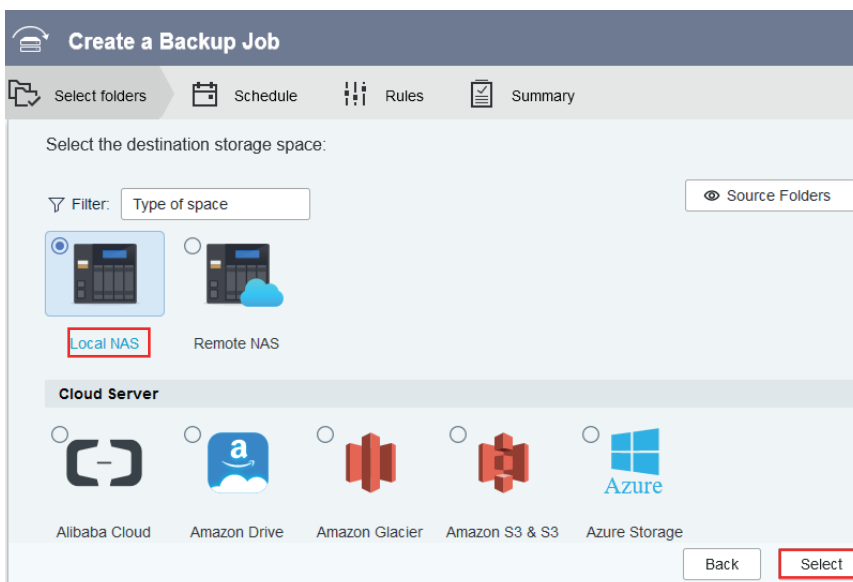
Choose **Backup now**.

To create a new backup job click **New backup job**.



Select the source folders of your files you want to backup.

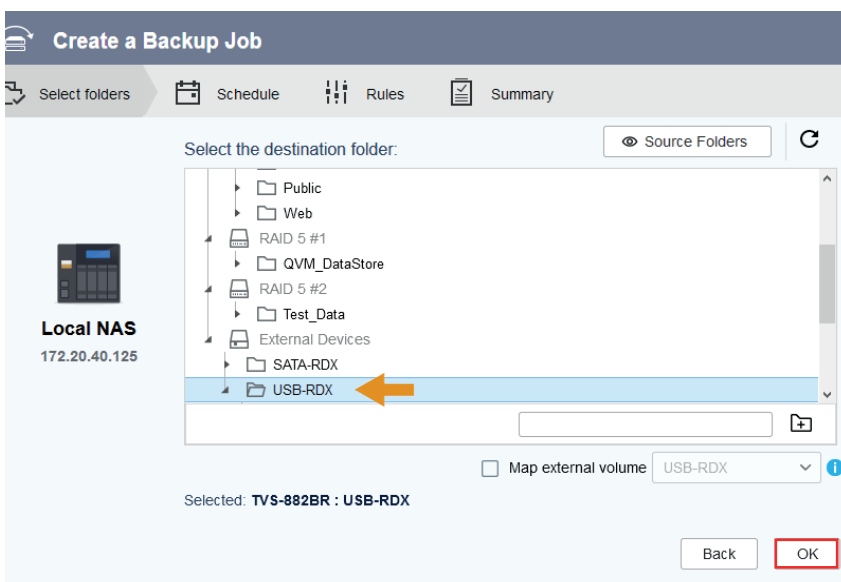
Click **Next**.



Select the destination storage space of your backup.

As RDX is attached to the local system, select **Local NAS**.

Click **Select**.



Now, select the RDX system, you want to backup your files. In our case, we chose USB-RDX.

Click **OK**.

**Create a Backup Job**

Select folders | Schedule | Rules | Summary

Job Name: Backup to RDX

Description: This is the Backup Job with the USB-RDX QuikStor drive as the backup destination.

Local NAS 172.20.40.125 → Path: USB-RDX

Total folders: 1 folders  
Total files: 17 files  
Total size: 5.05 GB

Source Folders

Cancel | Next

Source and destination are defined.

Now, name and describe this backup job according your requests.

Click **Next**.

**Create a Backup Job**

Select folders | Schedule | Rules | Summary

Schedule

Version Management OFF

**Set the job schedule:**

- Scheduler  
Up to 30 schedules can be created.
- Run after job: Select a job  
This job runs every time the selected job has finished running.
- No schedule
- Auto-backup  
The job runs each time an external storage device is connected to the NAS.

Backup now

Eject external volume after completion

Cancel | Back | Next

The scheduler allows you to choose between minutely, hourly, daily, weekly or monthly or one-time backups. In addition, backups can be performed after another job or as soon as the RDX is connected to the NAS system.

You also should check the **Eject external volume after completion** box to eject the RDX media for rotation reminder.

Click **Next**.

**Create a Backup Job**

Select folders | Schedule | Rules | Summary

Methods

Policies

Options

Enable filters

- Exclude symbolic links  
Exclude symbolic links located in the paired folder.
- Exclude hidden files and folders
- Exclude system-generated temp files  
Excludes temporary files created by the system.

Advanced Filters

Advanced settings

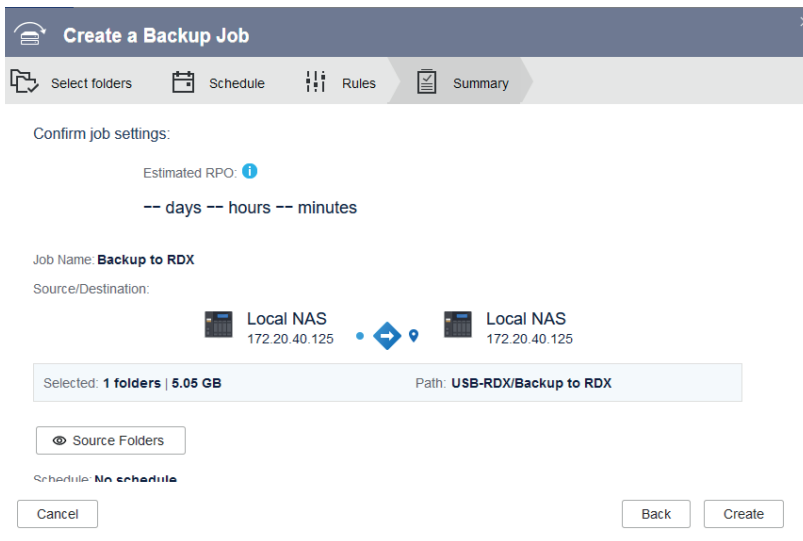
Use QuDedup

Cancel | Back | Next

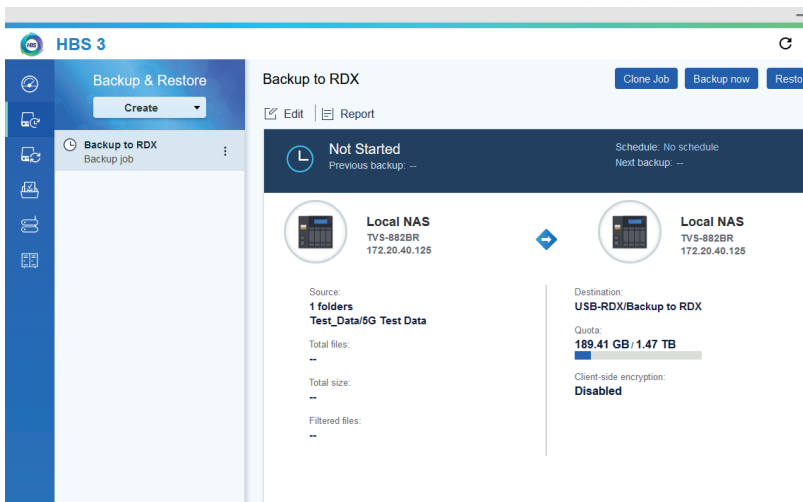
You might choose from several backup options. Please refer to the QNAP manual for further information.

*If you want to be able to restore files to another location (server, desktop, laptop, ...), please uncheck **Use QuDedup!** (HBS 3 will then create accessible files instead of a backup set.)*

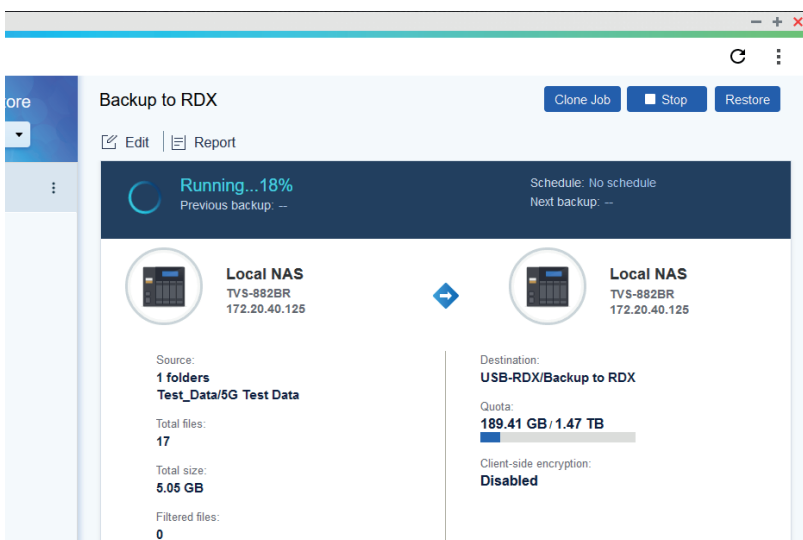
Choose your options, then click on **Next**.



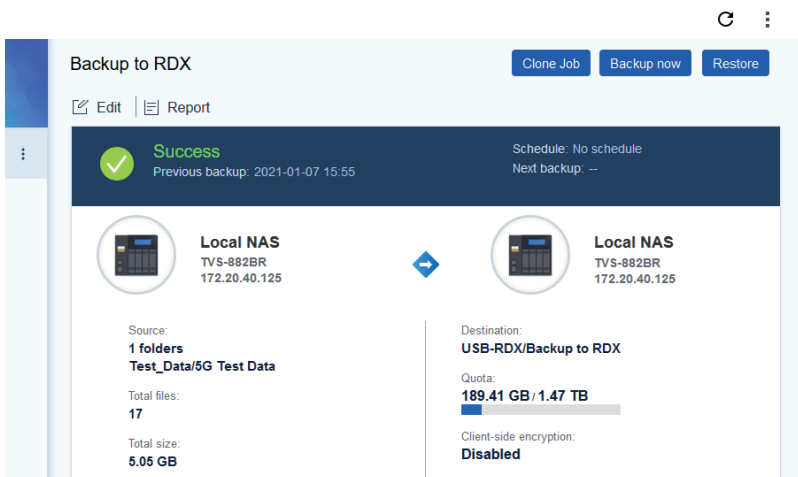
Check all your setting in the summary view. If changes are necessary, click on **Back**, otherwise click on **Create**.



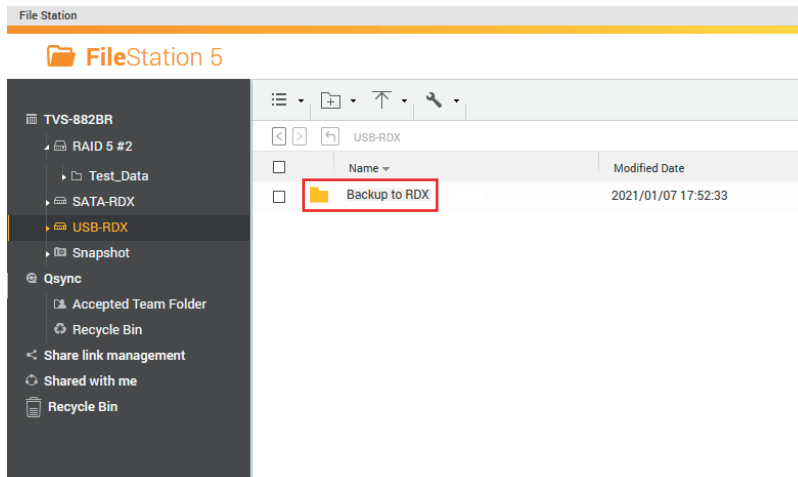
The backup job *Backup to RDX* has been created. It will start upon the specified schedule or by clicking **Backup Now**.



The backup job starts.



▶ The backup job completed successfully.

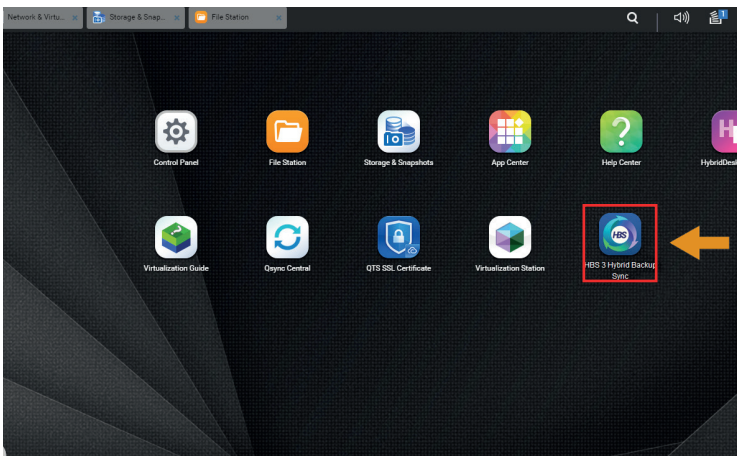


▶ If checking the RDX content, you will find a new directory named after the backup job.

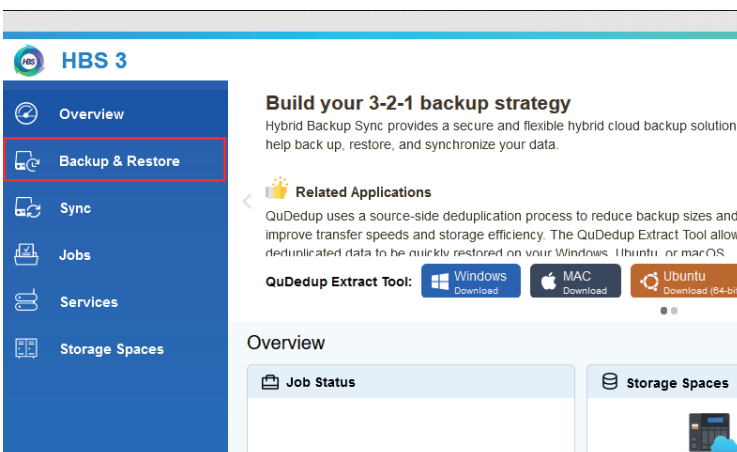
*For media rotation purposes, create this directory on every RDX media which will be incorporated into the media rotation scheme before running the first backup job on the new media.*



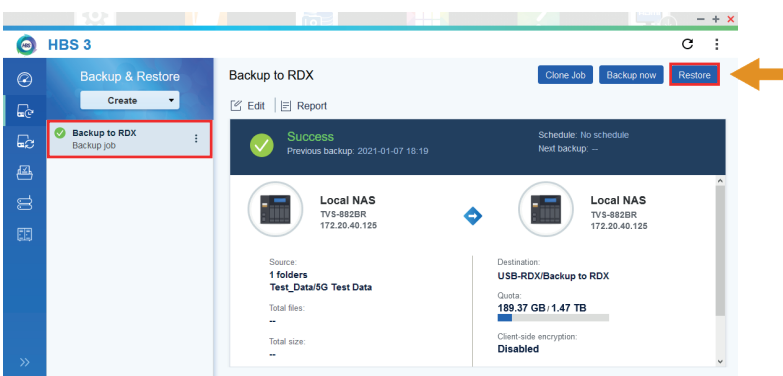
## Create a restore job



From the main menu start  
HBS 3 Hybrid Backup Sync.



From the **Overview** menu select  
**Backup & Restore**.



Choose the backup job you want  
to perform the restore.

Click on **Restore**.

**Create a Restore Job**

Select folders | Schedule | Rules | Summary

Job Name: Restore from RDX  
Description: Restore Job from the USB-RDX QuikStor

Source: Backup job | Destination

Local NAS 172.20.40.125 → Local NAS 172.20.40.125

Backup to RDX → Selected location

Select source + Choose a destination +

Skip deleted data

Cancel Next

Name and describe this restore job according your requests.

Select the source folder and chose **Original location** as the destination.

**Create a Restore Job**

Select folders | Schedule | Rules | Summary

Job Name: Restore from RDX  
Description: Restore Job from the USB-RDX QuikStor


Source: Backup job | Destination

Local NAS 172.20.40.125 → Local NAS 172.20.40.125

Backup to RDX → Original location

Selected: 1 folders

Skip deleted data

Cancel  Next

Click on **Next**.

**Create a Restore Job**

Select folders | Schedule | Rules | Summary

Confirm job settings:

Job Name: **Restore from RDX**

Source/Destination:

Local NAS 172.20.40.125 → Local NAS 172.20.40.125

Source backup job: Backup to RDX Original location

Version: Latest version : 1 folders

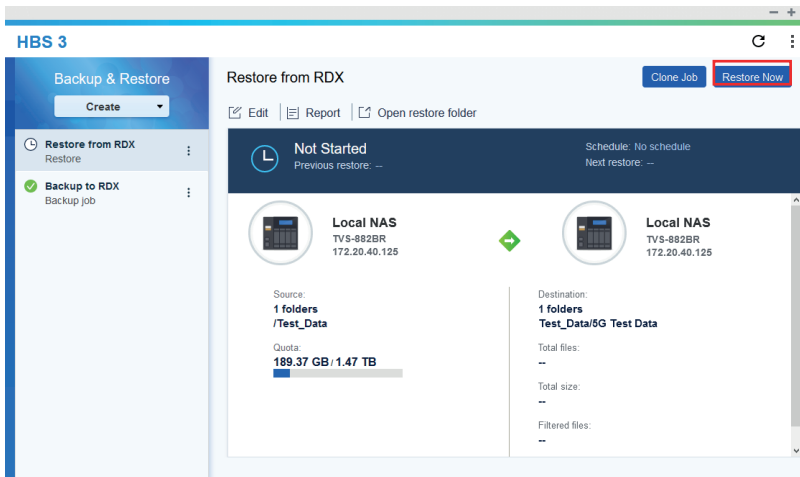
Conflict policy: **Rename local files**

Schedule: **No schedule**

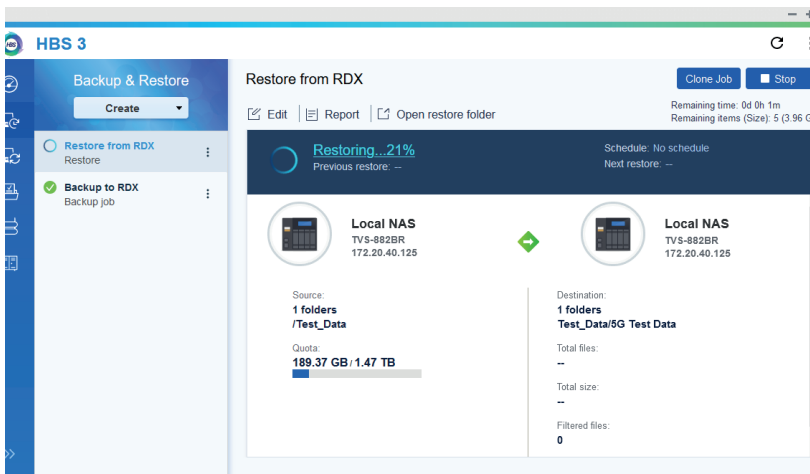
Cancel Back **Restore**

The summary screen shows the setting for your review.

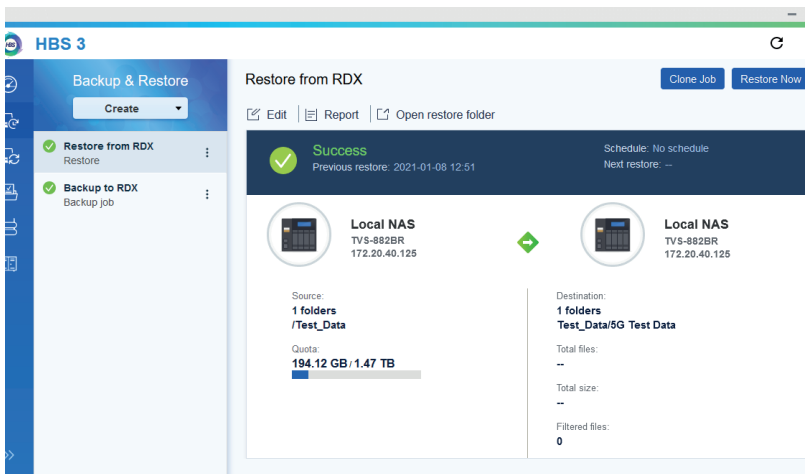
If changes need to be done, click on **Back**, otherwise click on **Restore**.



The restore job has been created. Click on **Restore Now** to perform the restore.

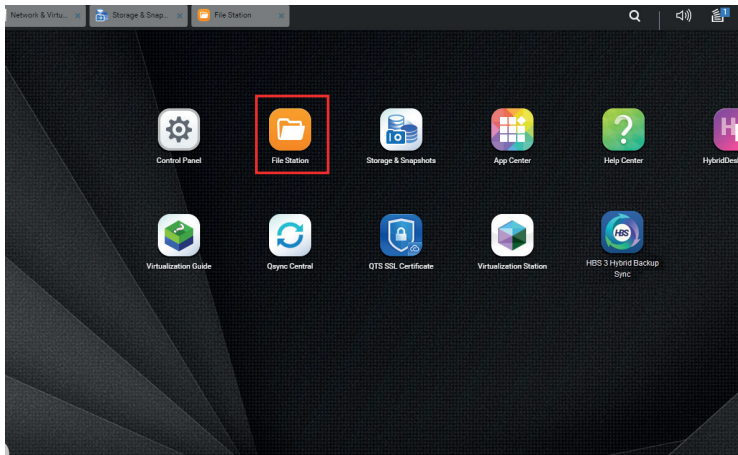


The restore job is running.



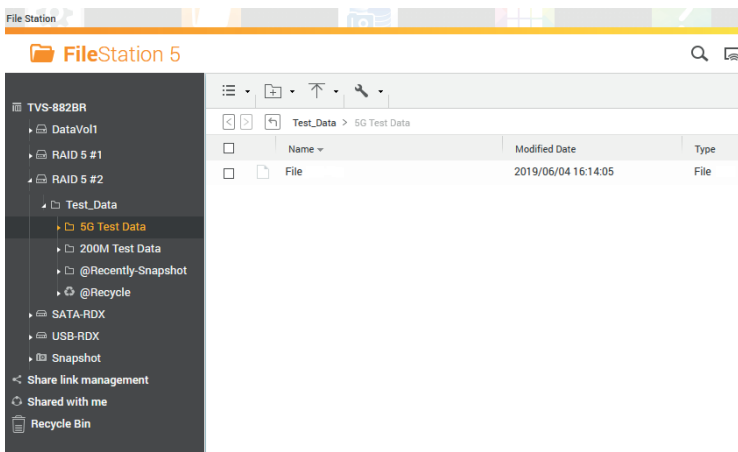
The restore job ended successfully.

## Perform a restore using File Station



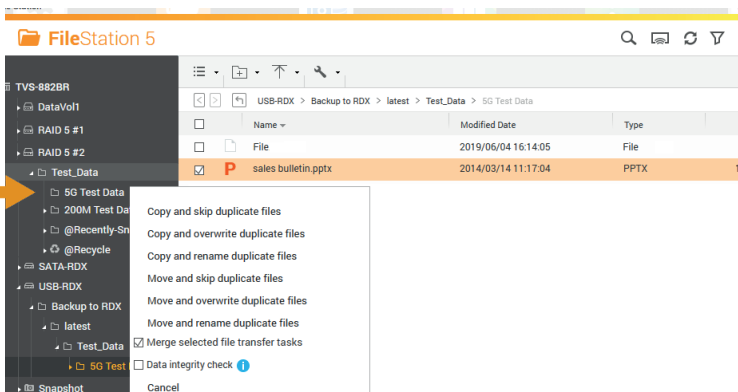
If there is a need of just restoring a couple files, it might make sense, to use File Station to recover from data loss.

From the main menu start **File Station**.



Browse to the directory where you need to recover the lost file.

In our example, we deleted a presentation by accident from the directory 5G Test Data.



Browse to the Backup destination (in our case USB-RDX - Backup to RDX - Test\_Data - 5G Test Data).

Select the file(s) you want restore (sales bulletin.pptx in our case).

To restore the files, drag them to the desired directory. Choose one of the options from the popup-window regarding your requests.

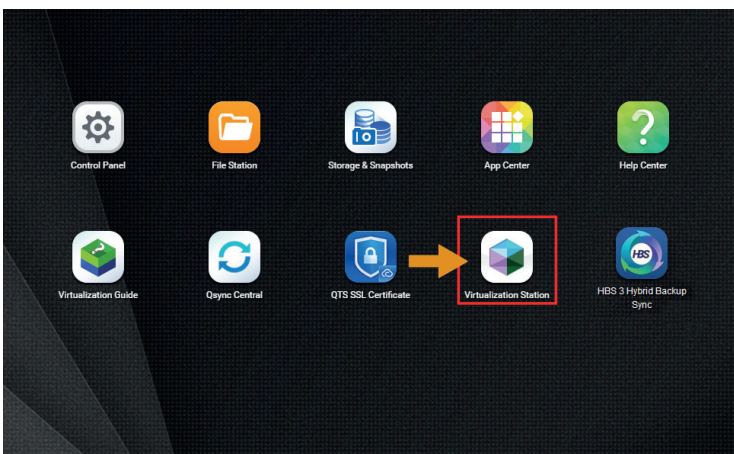
## Using the Virtualization Station

Most QNAP NAS storage systems offer the Virtualization Station application (see the [Virtualization Station system requirements](#) for more information). QNAP Virtualization Station enables virtualized desktop operations on the NAS for managing multiple virtual machines with multiple operating system types. With the easy-to-use interface, you can centrally manage all virtual machines created on the Turbo NAS with least efforts.

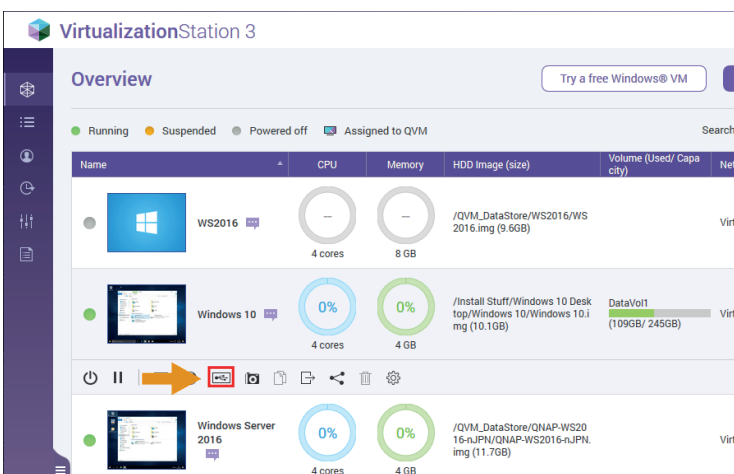
RDX QuikStor drives can be assigned to a virtual machine and benefit from removable storage for backup and archiving tasks with any supported application (see our [software compatibility list](#) for supported applications). In addition, you can install software utilities like [rdxLOCK](#) for regulatory compliance archiving (WORM), where data must not be deleted or overwritten, or for ransomware protection (RansomBlock\*), which secures backups against virus and ransomware attacks and ensures full recovery in case of infected data and blocked computer systems or RDX Manager with PowerEncrypt feature for integrated SATA III drives (currently available for QNAP TVS-882BR only), which encrypts data stored on RDX media for secure transportation and archiving.

In addition to the internal data store of the VM, the virtual machines can access directly data stored on the NAS system. With this, NAS data can be backed up to RDX using any RDX compatible backup application. \* not available for Windows Server 2019

### Assigning a RDX QuikStor USB drive to a virtual machine



From the main menu select **Virtualization Station**.



The Virtualization Station overview screen appears, displaying all available virtual machines. Select the desired virtual machine you want to attach the RDX QuikStor drive.

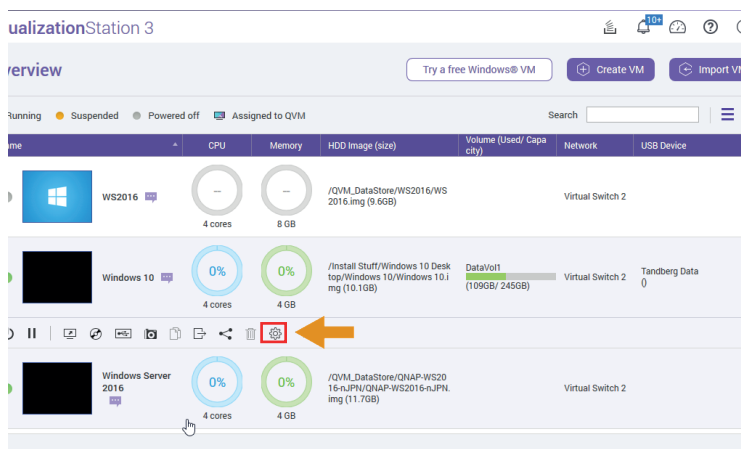
Click on the **USB Icon**.



## Assigning a RDX QuikStor SATA III drive to a virtual machine (available for QNAP TVS-882BR)

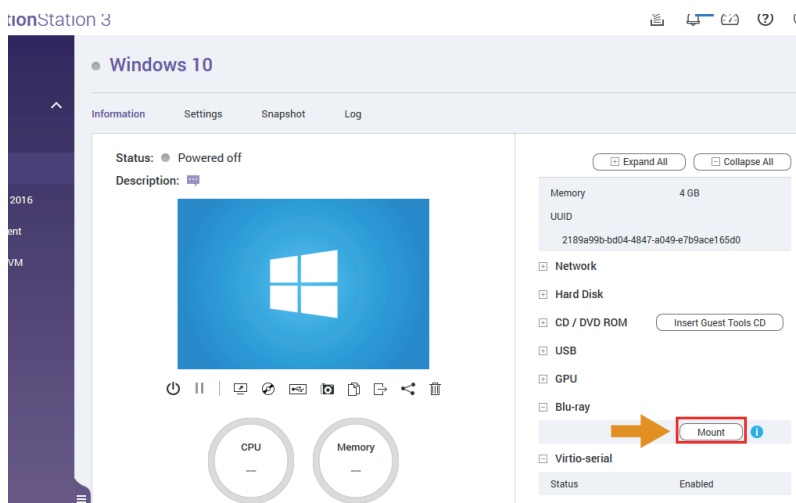
The QNAP TVS-882 NAS system offers an regular 5.25" drive bay for integration of an internal RDX QuikStor SATA III drive. The advantage of this solution is the clean integration of RDX QuikStor, without external cables and devices.

Another big advantage is the utilization of the hardware encryption **PowerEncrypt** provided by the RDX Manager software for SATA III drives, which can be installed on Windows-based virtual machines.



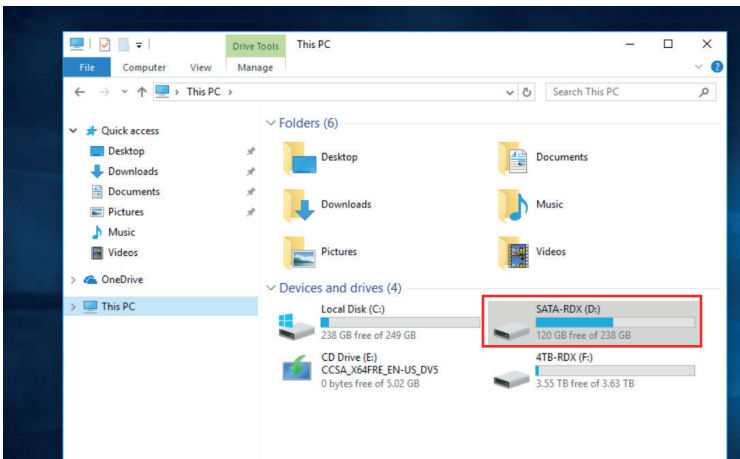
Start the Virtualization Station.

Stop the virtual machine, you want to assign the RDX QuikStor SATA III drive and click on the **Settings** icon.

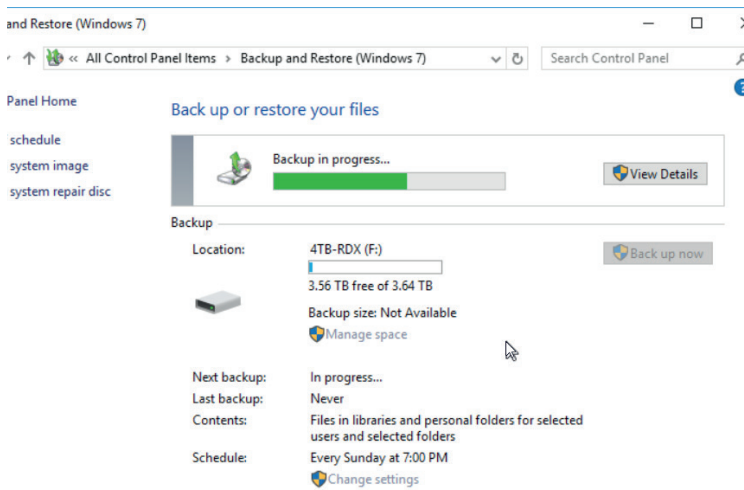


Expand the Blu-ray section on the right hand side of the windows by clicking on the **+ sign**.

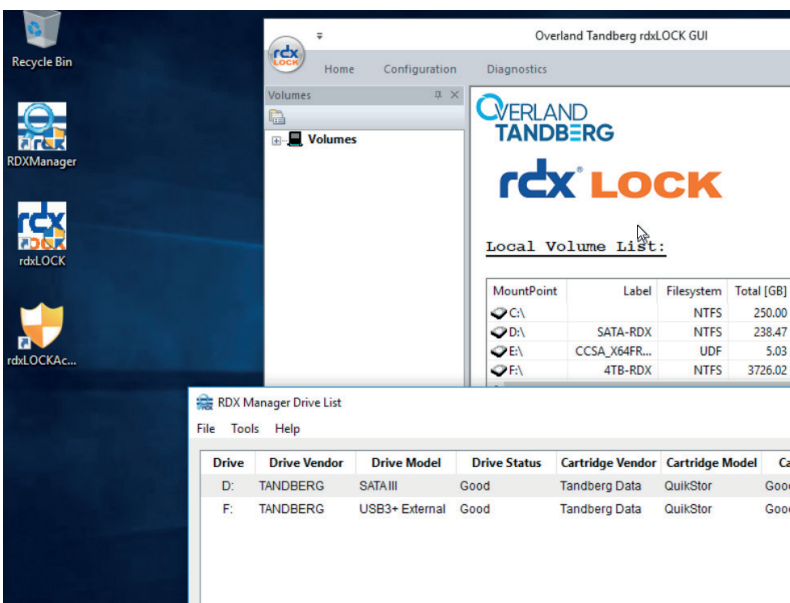
Click on **Mount**.



The RDX SATA III drive has been assigned and can be used in the virtual machine ...



... for example as a backup target for the built-in Windows Backup utility.



By installing the RDXManager and rdxLOCK software, you can use WORM, Ransomblock\* and PowerEncrypt features.

\* not available for Windows Server 2019



Sales and support for Overland-Tandberg products and solutions are available in over 90 countries. Contact us today at [salesmea@overlandtandberg.com](mailto:salesmea@overlandtandberg.com). Visit [OverlandTandberg.com](http://OverlandTandberg.com)