

Integrating RDX® QuikStor® into Synology® NAS Backup

Synology NAS Systems provide an OS-built in utility to enable scheduled backups on direct attached USB disks to secure business critical data. With the integration of Tandberg Data's RDX QuikStor removable media systems, users can now implement a full disaster recovery solution.

Even though almost all Synology NAS storage systems offer data redundancy via RAID technology, data should be backed up to an external device to be protected against hardware failures or human errors. An easy to use built in utility allows scheduled backups to USB attached devices like memory sticks or external hard disks.

But these devices don't offer much reliability and durability, as they are not specifically designed for backup and archiving tasks with on/offline storage requirements. The RDX QuikStor removable storage system is a media based rugged, reliable and convenient backup appliance which fits perfectly into a professional backup strategy. With its USB3+ technology, RDX QuikStor easily attaches to Synology NAS system's USB 3.0 port and is ready to go.

After the backup job has completed, the RDX QuikStor media can be ejected to be placed into a secure location. Another media should then be inserted for the next backup job. This media rotation scenario provides the best protection against data loss and unpredictable failures and disasters.

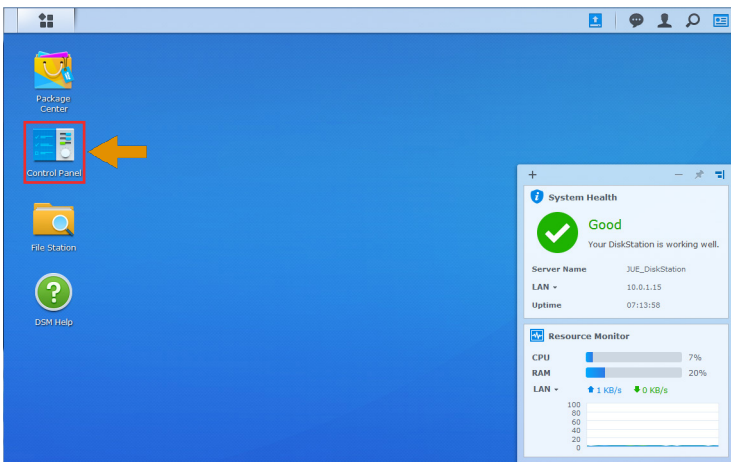
The following guide explains how to integrate a RDX QuikStor drive directly to a Synology NAS system and how to schedule a backup job.



RDX QuikStor combines the benefits of Disk and Tape

Synology NAS Systems provide a direct backup to RDX QuikStor

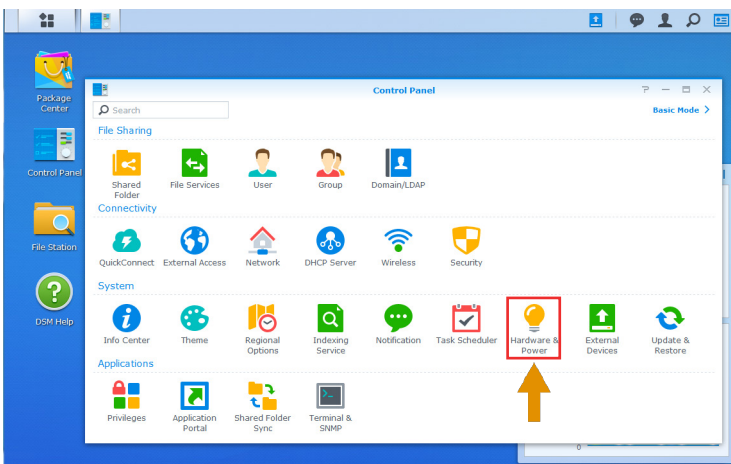
Introduce RDX to Synology NAS



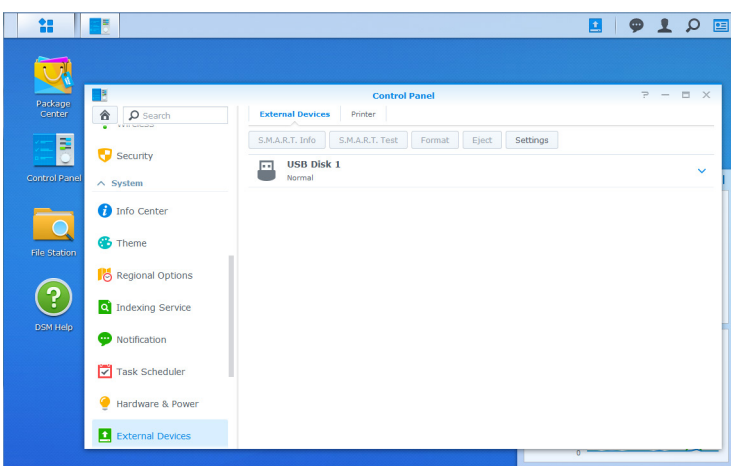
Make sure that your Synology NAS is at latest OS level. Minimum requirement is DSM 6.2.1. (See **Control Center > Info Center.**)

Start the NAS administration window.

Connect your RDX QuikStor drive to the USB3.0 port on the NAS and insert an RDX media.

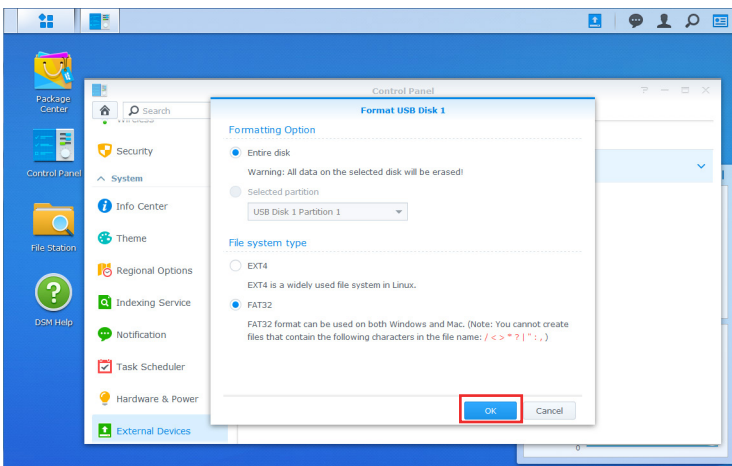


Open the **DSM Control Panel.**
Click **External Devices.**



The RDX drive will appear as an USB disk. The order number is generated based on the chronology of USB disks already connected (**USB Disk 1** in our case).

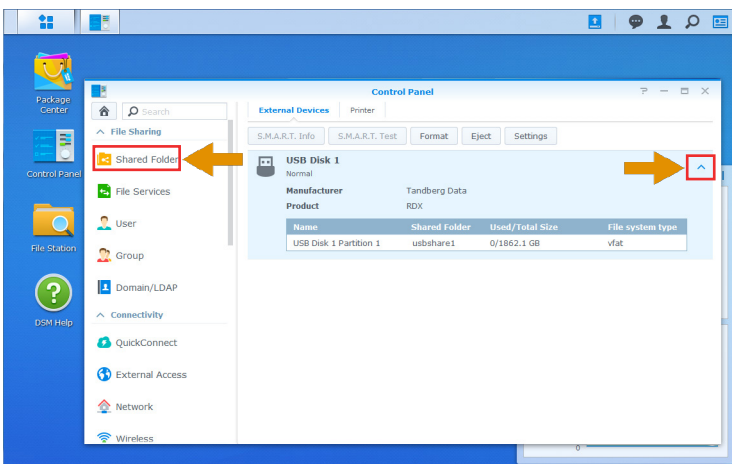
RDX media are preformatted with NTFS and are ready to use for backup. To change the file system type, select the device and click **Format.**



Choose **Entire Disk** as a formatting option.

To access the media from a Windows System, select **FAT32** as a file system type or keep the NTFS pre-formatting. For Linux, select **EXT4**. (FAT32 is selected in this example.)

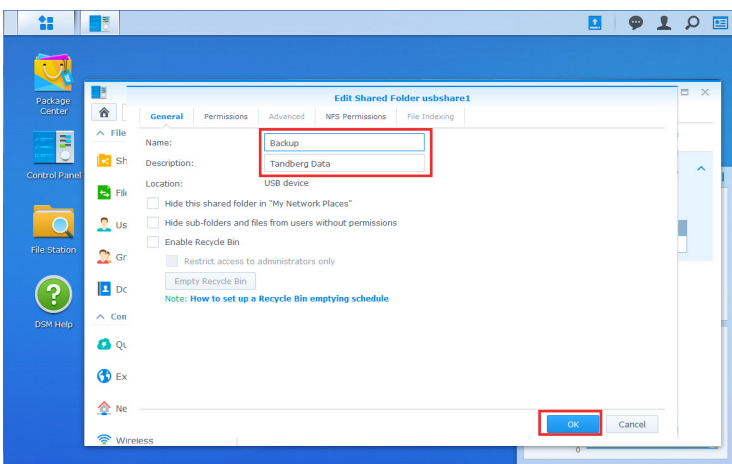
Click **OK**, and then click **Yes** at the data loss warning message.



After formatting has finished, we have an RDX media with a share called **usbshare1**.

To rename this share, expand the share section by clicking the down-arrow on the right.

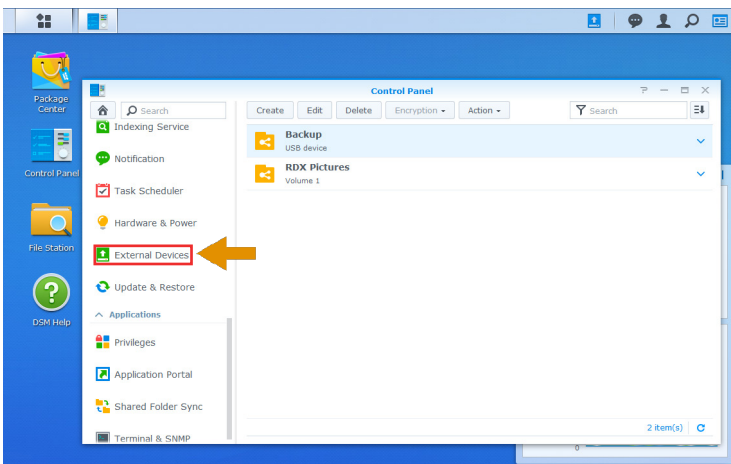
Scroll up the left-hand menu panel to the File Sharing section and click **Shared Folder**.



Select this share and choose **Edit** from the top menu.

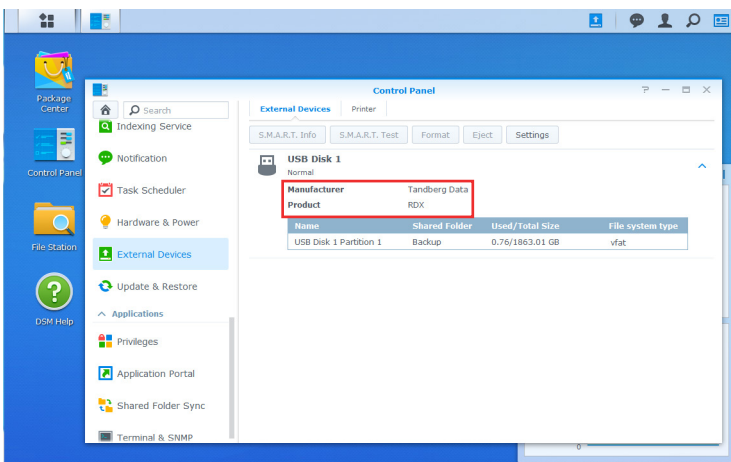
In this example, **Backup** was entered as a name and **Tandberg Data** as a description.

Click **OK**.



The renamed share name **Backup** is shown.

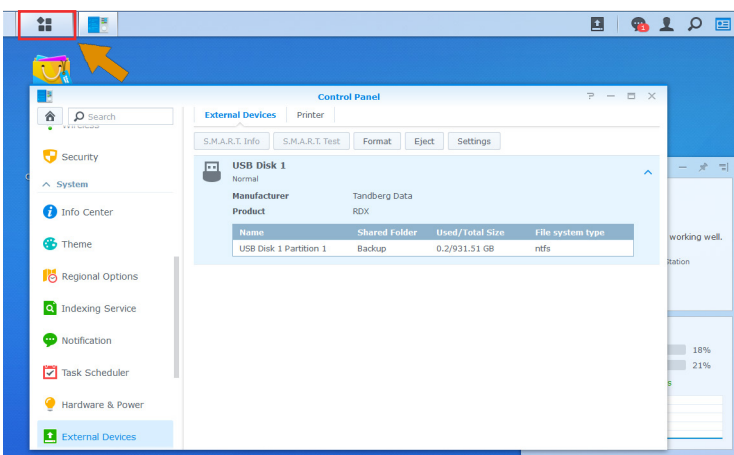
Scroll the left-hand menu panel down to the bottom and click **External Devices**.



Click the down arrow on the right side to expand the section named **USB Disk 1**.

It shows the changes (with manufacturer **Tandberg Data** and product **RDX** pre-inserted).

You are now using an RDX media formatted with FAT32 (vfat).

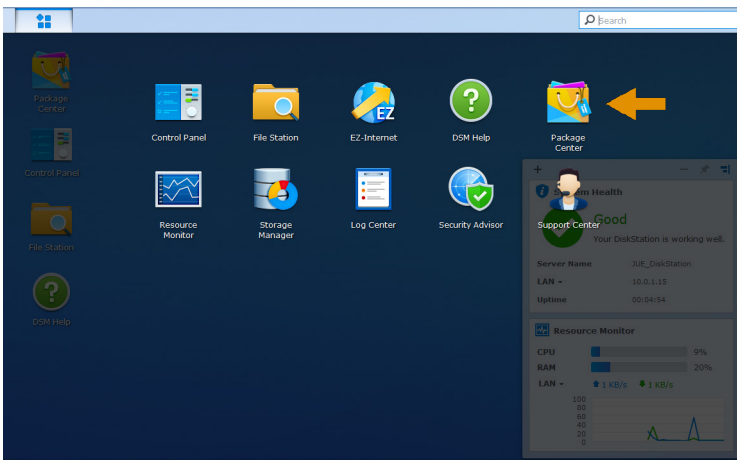


You should use multiple RDX media for media rotation. This enables you to store one media off-site for full disaster protection. Accordingly, a second or third media should be used. Repeat the formatting steps if required.

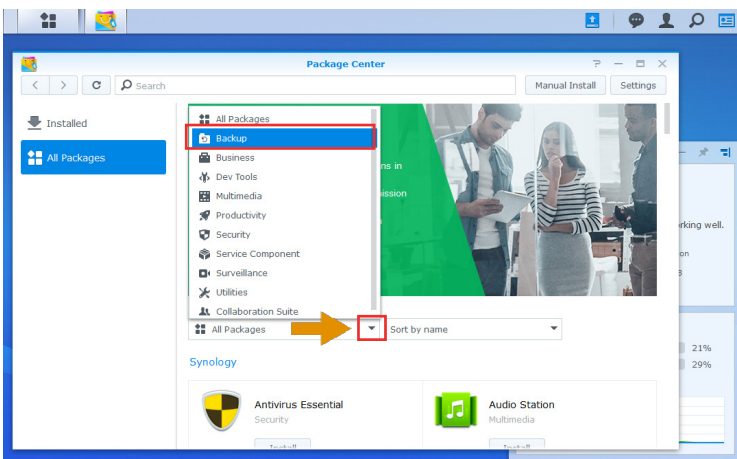
In this case, we will use a NTFS formatted 1TB cartridge.

To create the first backup, open the main menu (top-left icon).

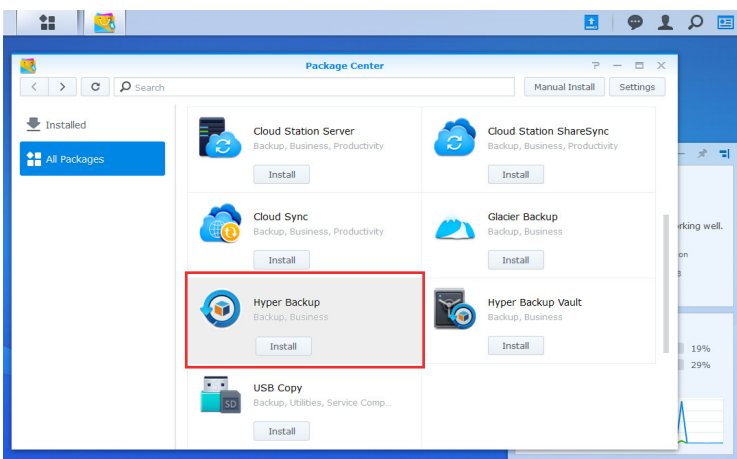
Download and install the backup software Hyper Backup



Click **Package Center** to download the appropriate backup software for RDX.

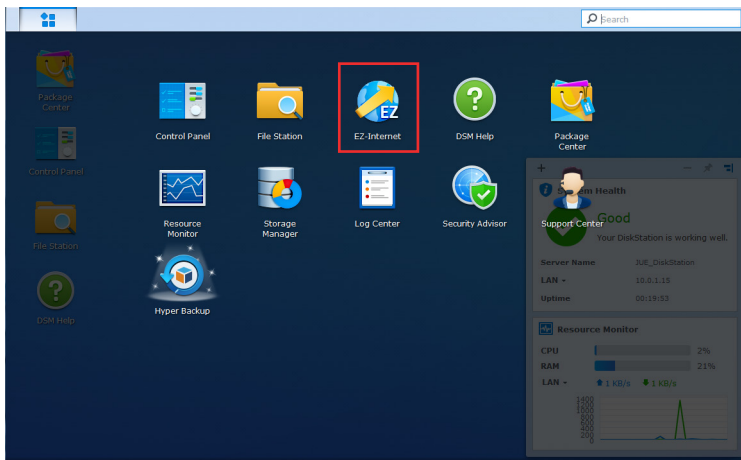


At the Package Center, open the drop-down **All Packages** menu and select **Backup**.



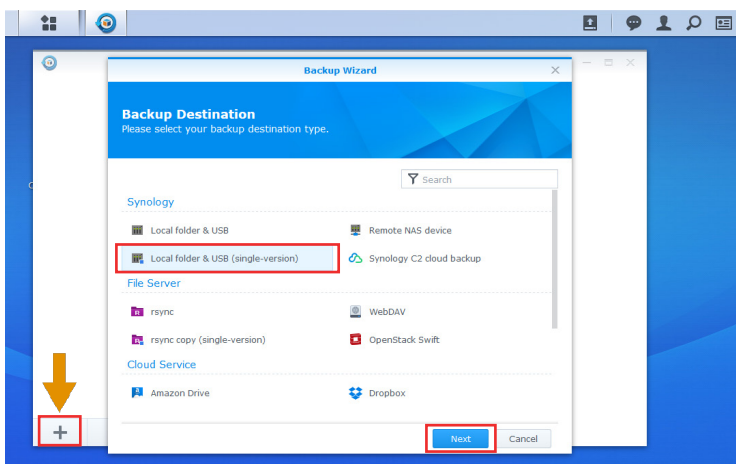
A list of different backup apps appears. **Hyper Backup** is the right app for a backup to RDX. Click **Install** for Hyper Backup. Close the **Package Center**.

Create a backup job



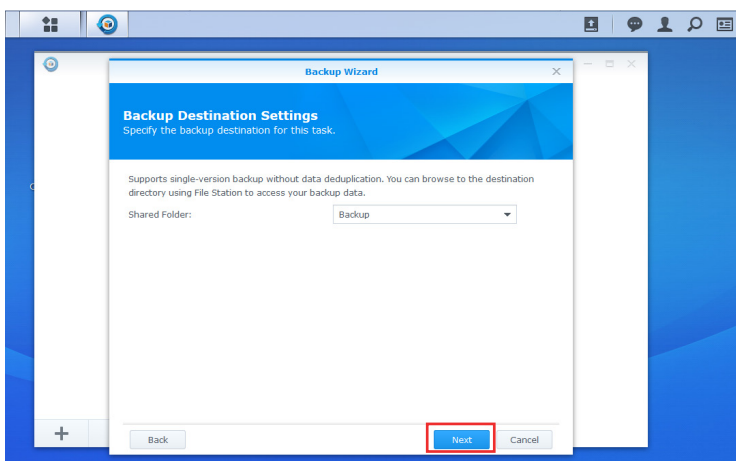
Hyper Backup is now shown on the Main Menu screen. Click the icon to launch it.

NOTE: As this is the first backup job being created, the **Backup Wizard** starts immediately. Otherwise, you need to click the plus sign (+) and select **Data backup task**.



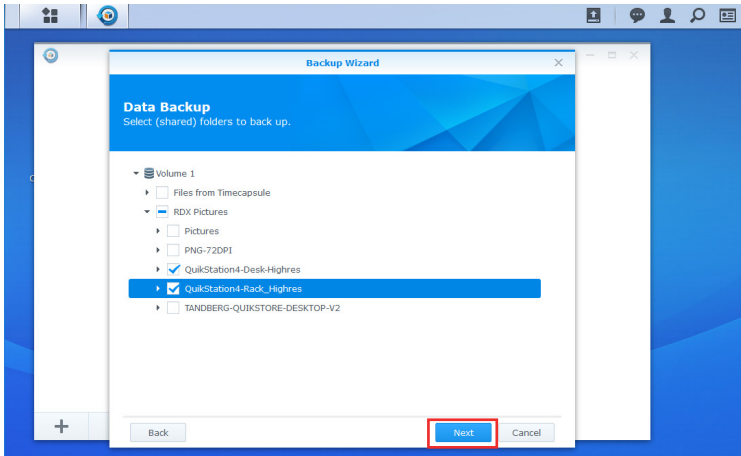
Select **Local folder & USB (single-version)** to create a file-based backup job to the RDX QuikStor.

Click **Next**.

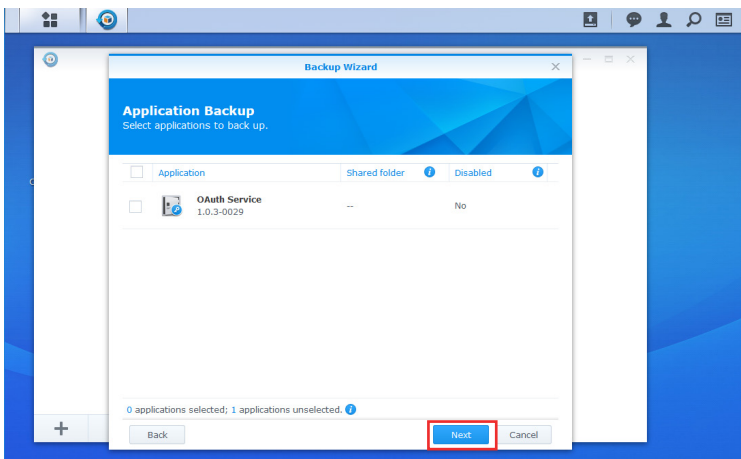


Select the shared folder on RDX named **Backup** which was created previously.

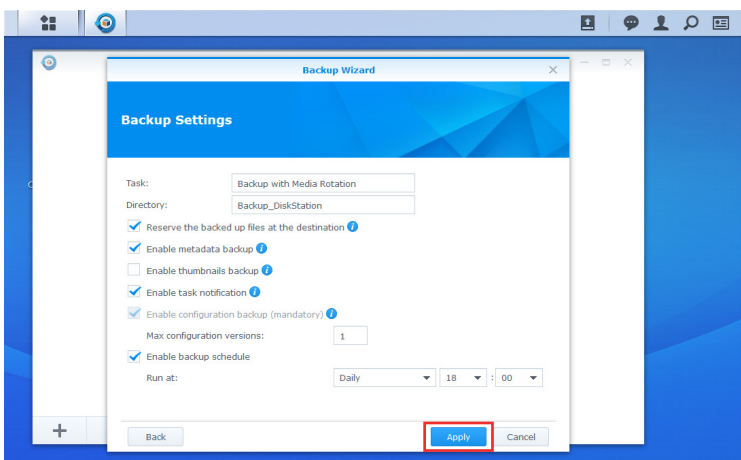
Click **Next**.



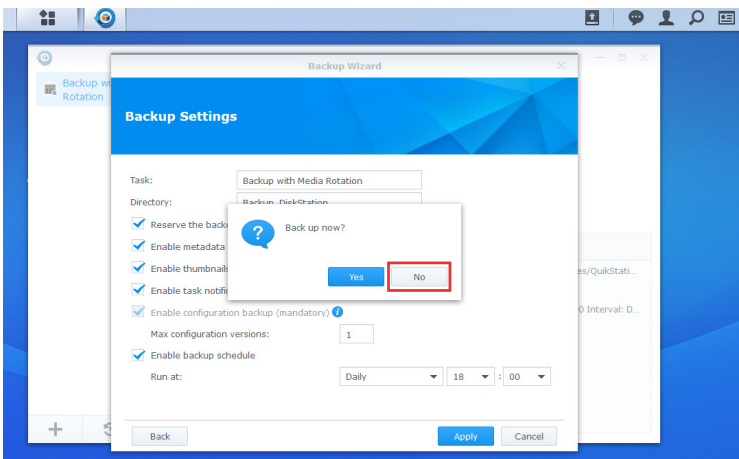
At the Data Backup screen, to select the folders being backed up, check the appropriate boxes. Click **Next**.



At the Application Backup screen, click **Next** to skip it for now.

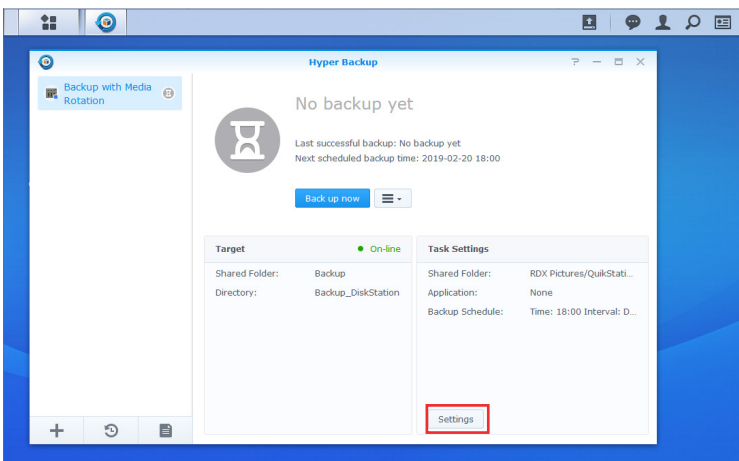


For Backup Settings, create a Task name (here we used **Backup with Media Rotation**) and a Directory name (here we used **Backup_DiskStation**) under which the backup files will be written. Select the options for your task. Click **Apply**.

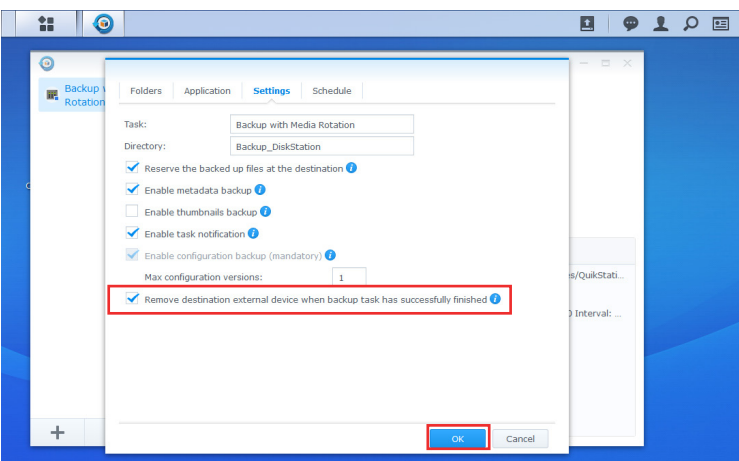


Your first backup job is now created.

As we need to change an important setting which was not listed during creation, click **No** at the pop-up message.



At the Hyper Backup screen, click **Settings** at the bottom.



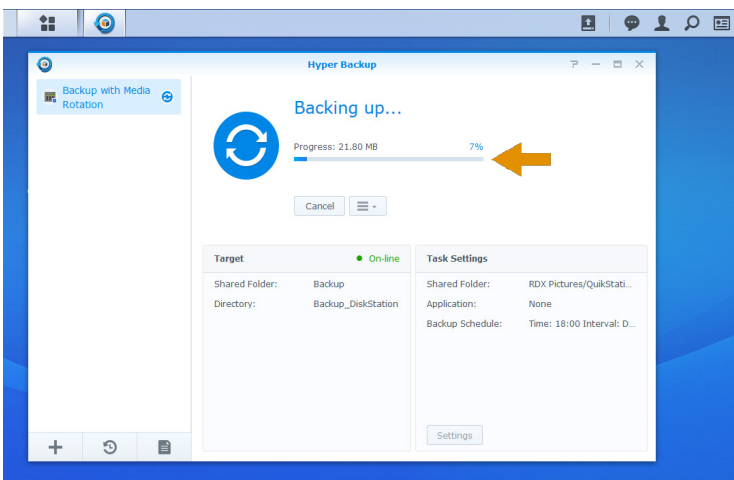
As we want to rotate the RDX media, it is convenient to get the media to eject automatically.

Select the **Settings** tab.

Check **Remove destination external device when backup task has successfully finished**.

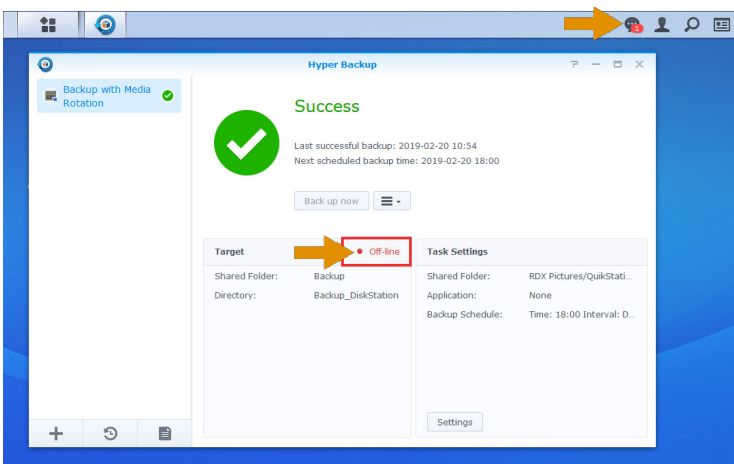
Click **OK**.

Performing a backup job with media rotation



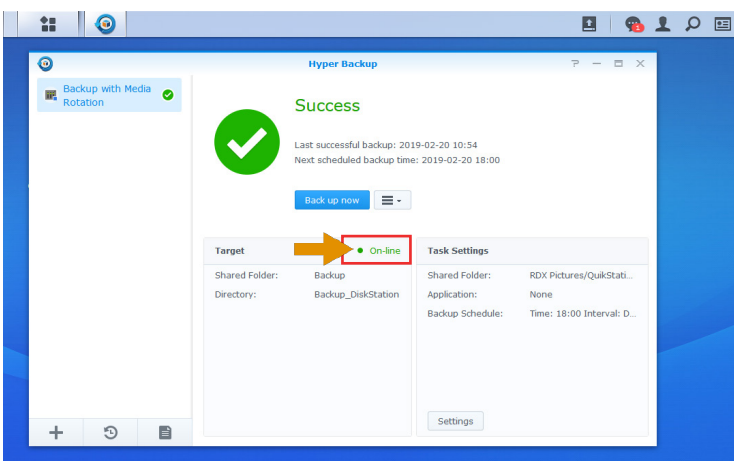
The backup starts according to the selected schedule. To start the backup immediately, click **Back up now** at the Hyper Backup main screen.

This screen then shows that the backup has started. A progress bar shows the status.



A green checkmark and **Success** message shows the backup has successfully finished. An appropriate message is placed in the message log.

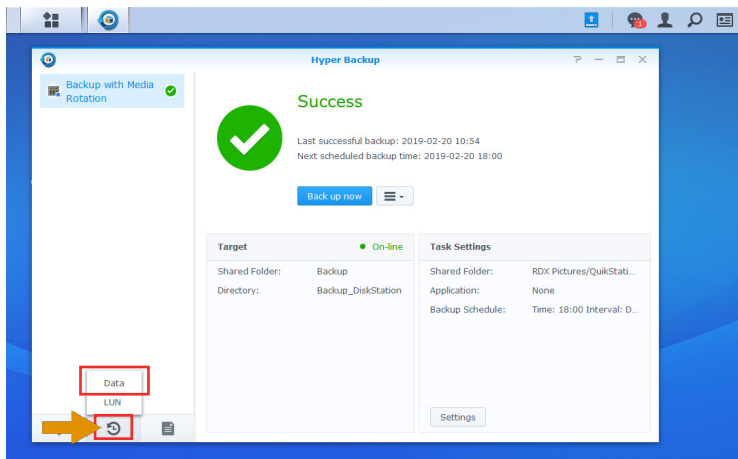
As ejection of the media was configured, the backup target is now offline.



For the next backup job, insert a new RDX media.

The media is recognized and the Target status changes to online. The next job is ready to run.

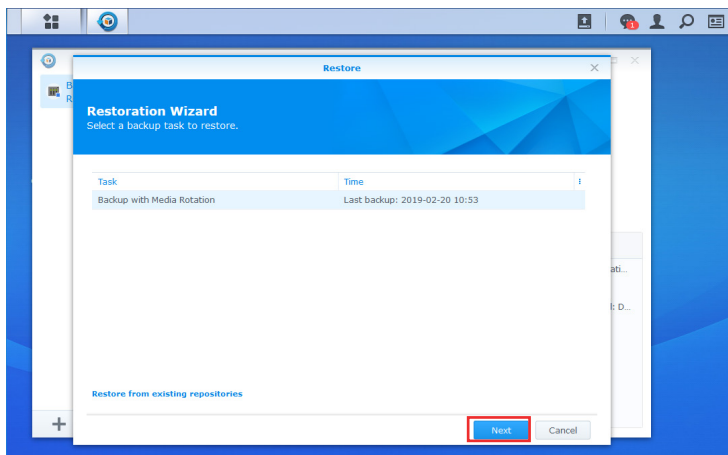
Performing a restore



Backups can be restored by choosing the **Restore** icon (notated by the orange arrow).

Choose **Data**.

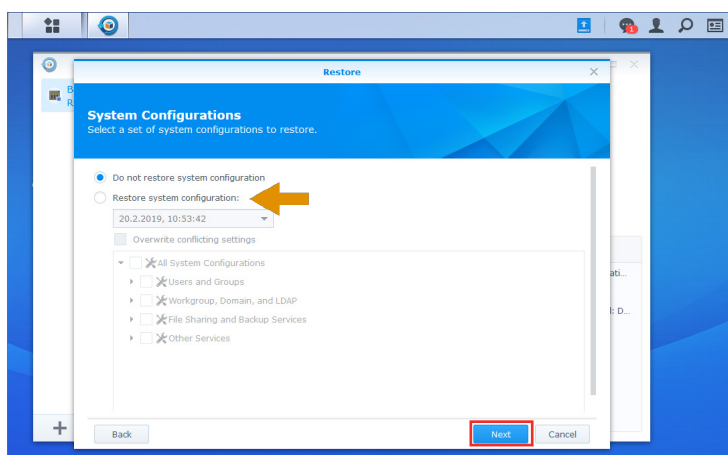
NOTE: If the RDX media is formatted with FAT32 or NTFS, backup data can also be recovered just by connecting the RDX drive to a server or PC in case the NAS system isn't available any more.



Select a backup job which should be restored and insert the appropriate RDX media.

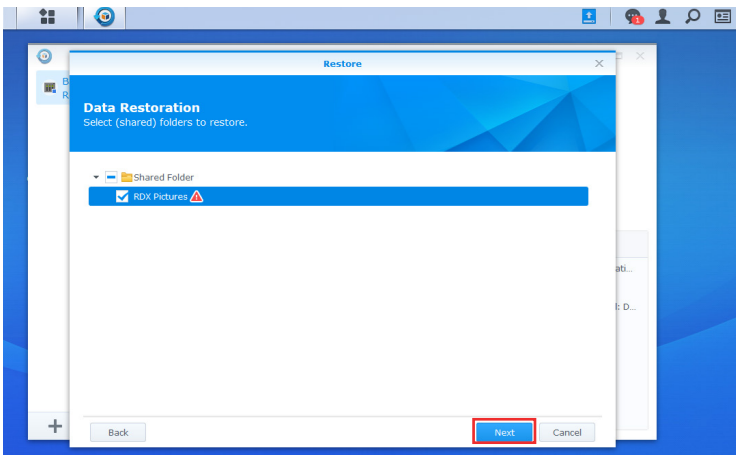
NOTE: If using media rotation, any cartridge of the media set could be used. We recommend to use the last recent media.

Click **Next**.

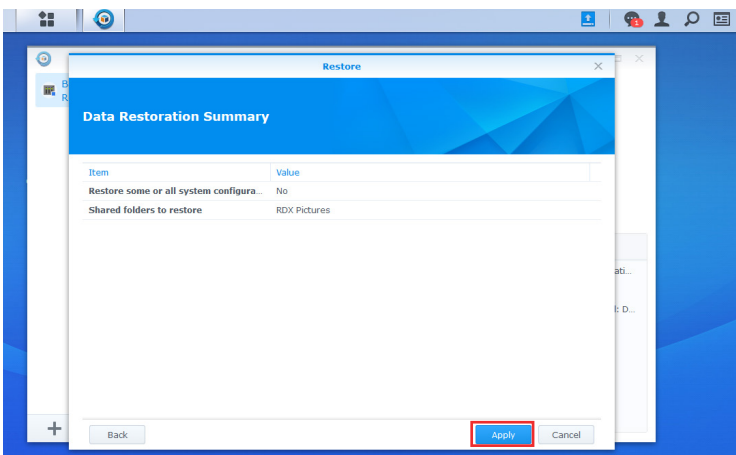


Decide whether the system configuration should be restored as well.

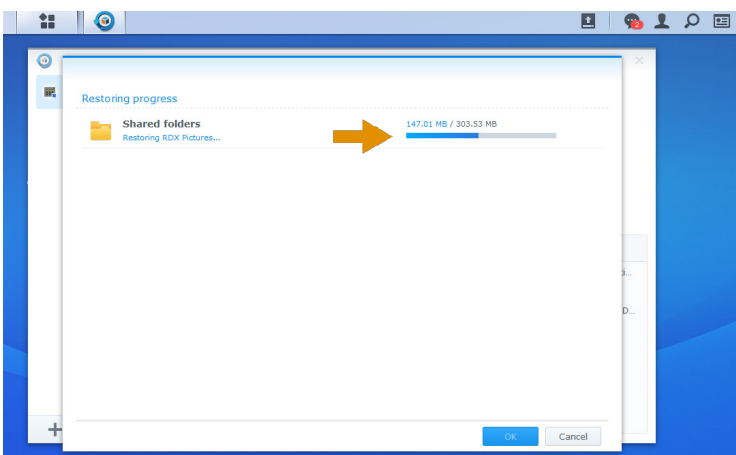
Click **Next**.



Select the data to restore. The red triangle indicates, that existing data on the DiskStation will be overwritten.
Click **Next**.



Check your settings and click **Apply**.



The restore process starts.
After the restore is done, the data is available again.

Sales and support for Overland-Tandberg products and solutions are available in over 90 countries.
Contact us today at sales@overlandstorage.com or sales@tandbergdata.com