

Integrating RDX® into Google Drive™ Backup and Sync

Along with RDX Removable Storage, Google Drive and Google Backup and Sync provides a great automatic two copy backup solution for small and medium businesses on different storage locations; Google Drive and RDX QuikStor.



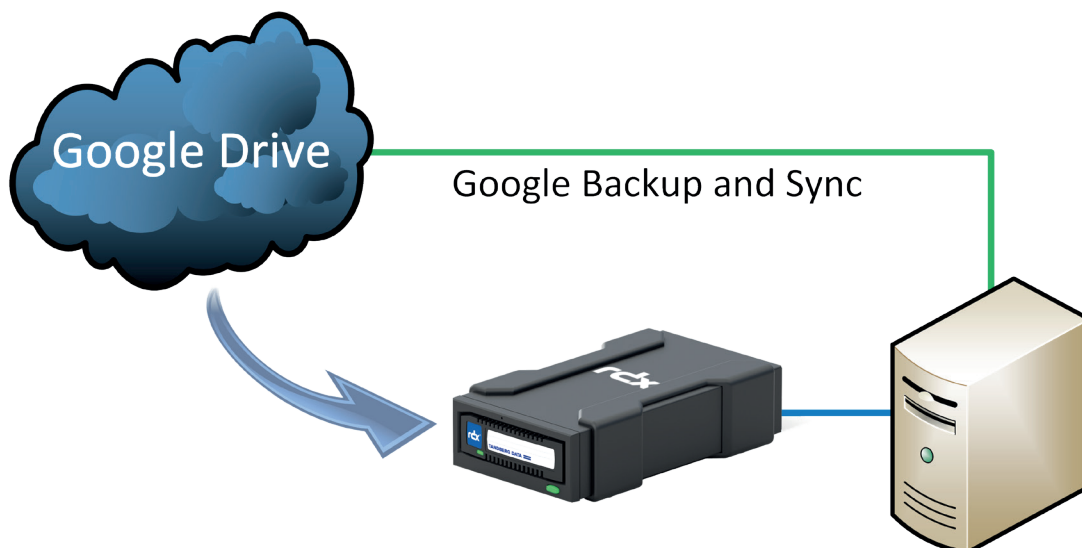
Complementing Cloud Backup

Backup to cloud is getting more and more popular for small and medium businesses. It helps organisations build a data protection strategy without setting up their own backup infrastructure that includes additional hardware and administration.

The problem is in the event of a local system crash. Users won't be able to restore from the cloud. The operating systems needs to be recovered and hardware drivers need to be installed. The solution is a local secondary backup should be established to be able to setup the infrastructure from scratch in case of a local disaster. This ensures a fast recovery and business continuity.

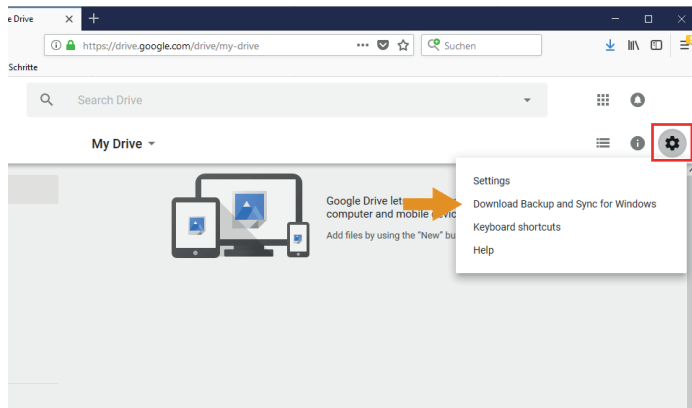
RDX® QuikStor™ - ruggedized, removable and simple

Overland-Tandberg's RDX QuikStor Removable disk is a system which simply attaches via USB 3.0 or SATA III. The RDX drive and media is connected to computer. The removable media is rugged, reliable, fast, and easy-to-use. RDX QuikStor is ideal for everyone, even users with no dedicated IT personnel and can be implemented as the primary backup target. Google drive with Backup and Sync complements RDX with synchronized backup data on RDX Media for local storage with cloud-backup.



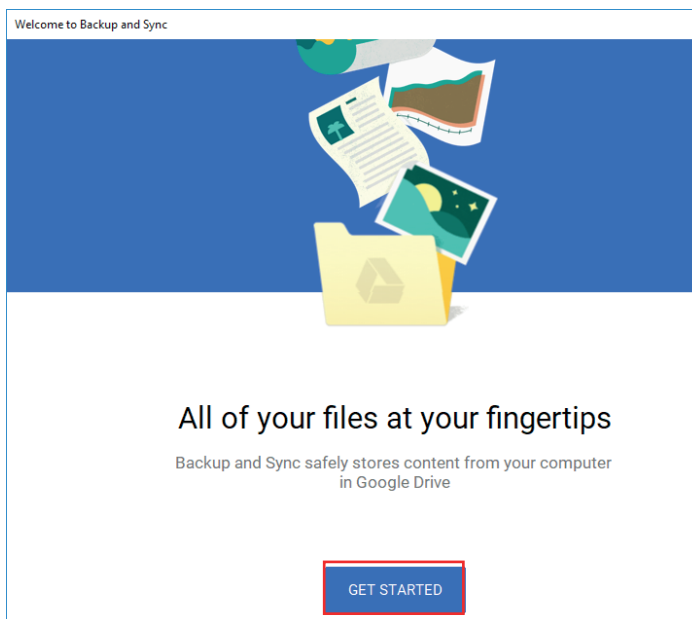
Downloading Backup and Sync

Login into your Google account and switch to the **Google Drive** application.

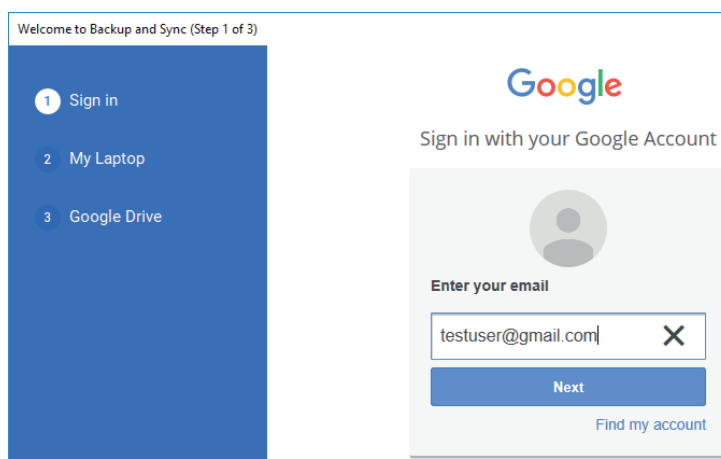


Click on **Settings** and select **Download Backup and Sync for Windows**.

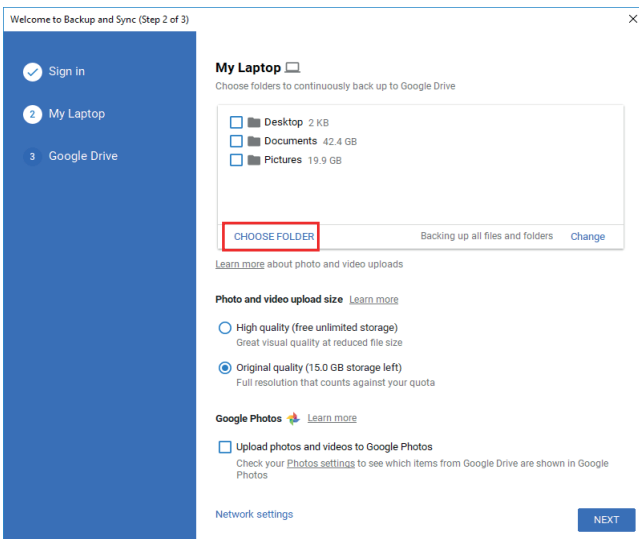
This downloads the file **installbackupandsync.exe** to your computer system (usually to the **Downloads** subdirectory).



Run **installbackupandsync.exe** and select **GET STARTED**.

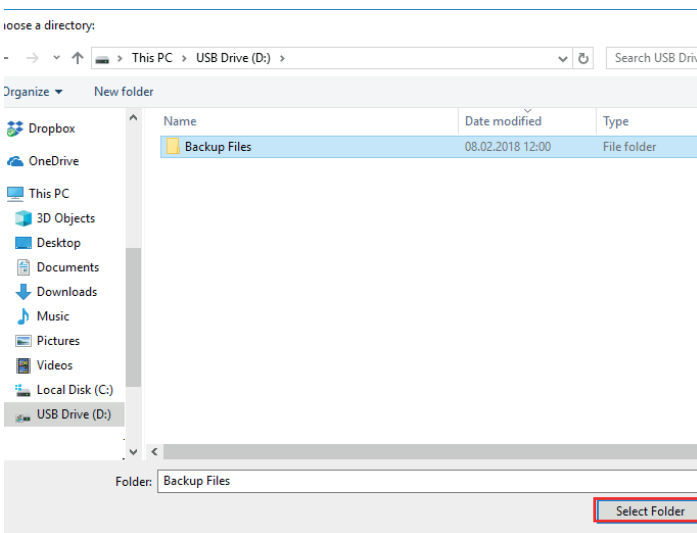


Sign in with your google account.



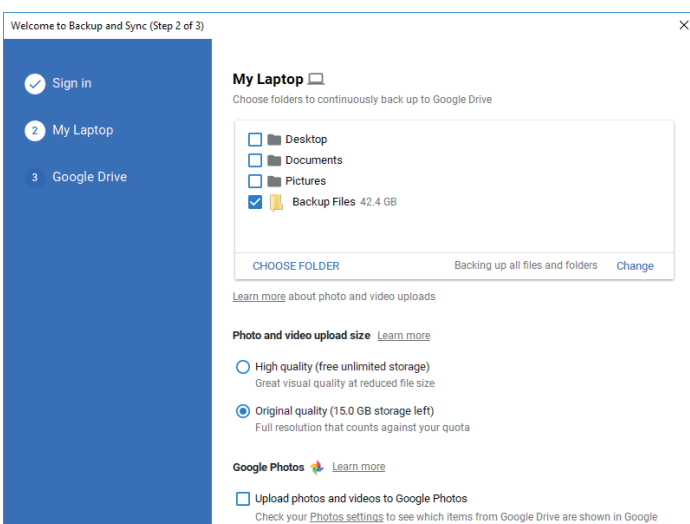
Backup and Sync initially selects the **Documents** and the **Pictures** subdirectory as the backup source.

Uncheck these defaults and select **CHOOSE FOLDER**.



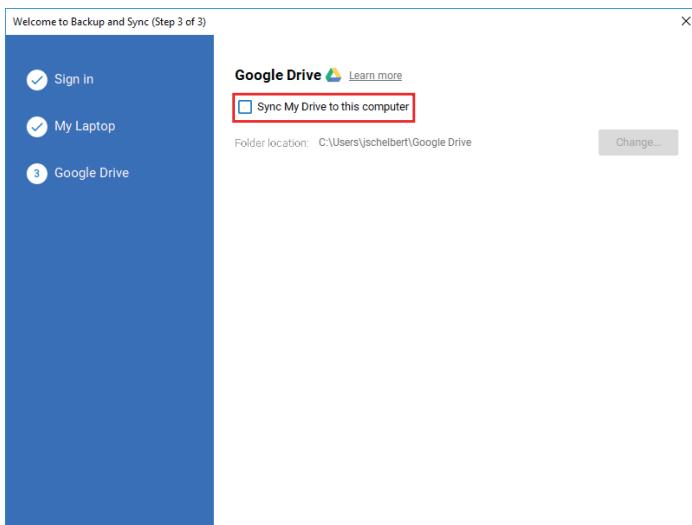
Select the RDX drive as a backup source. You might choose a specific path on the RDX media.

Click on **Select Folder**.



The RDX media is now defined as the backup source.

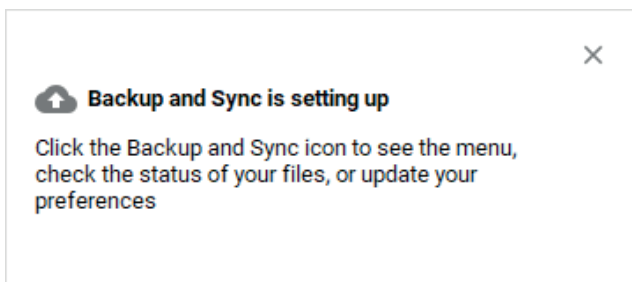
Click on **NEXT**.



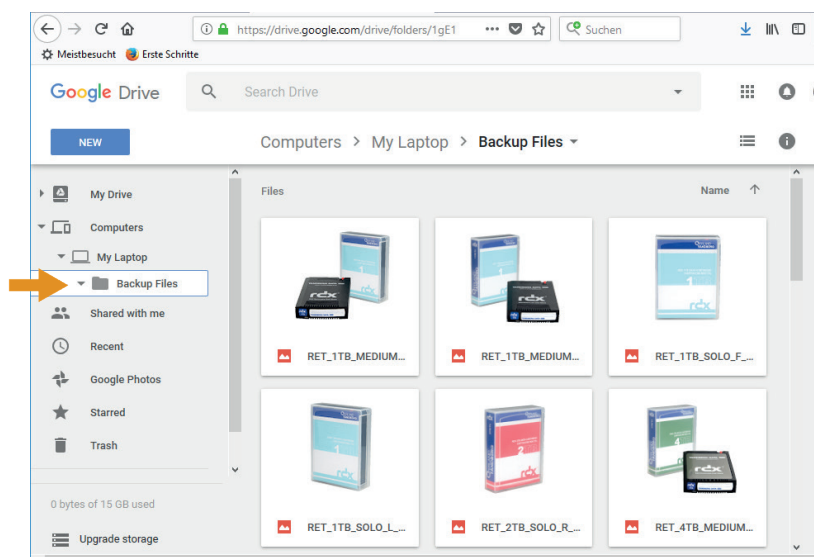
Uncheck the box **Sync My Drive to this computer**.

This is not needed as we already sync to RDX.

Click on **START**.



If there are already files on the RDX drive, the synchronization starts immediately.

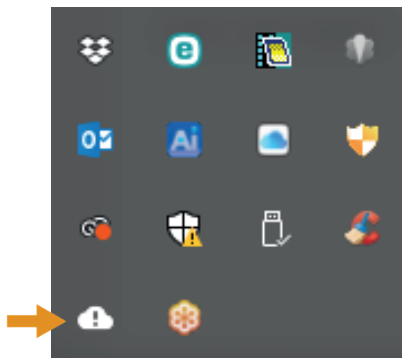


Whenever a new file is written to the RDX media, it will be synchronized to google drive.

Rotating the RDX Media

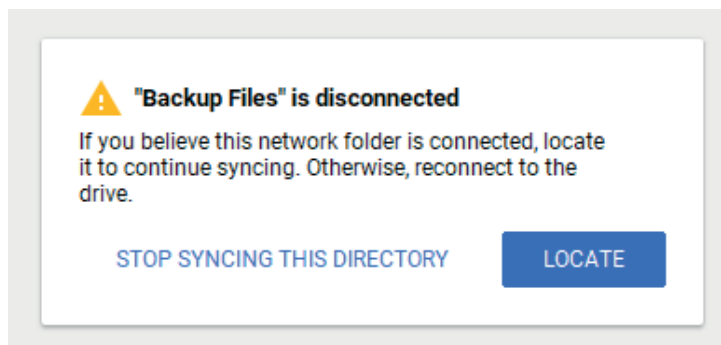
Backups are usually done to one local device. This might work as long as there are no local disasters or virus and ransomware attacks which block important data or the whole computer system, also makes it impossible to restore from the cloud too. Local disasters could also destroy the backup on the local device. Best practice is to maintain local off-site copies of backup data. This provides a solution for a local catastrophe. Sets of multiple backup media can be rotated between the datacenter and the off-site location.

If you use media rotation, you need to introduce the rotated media to Google Backup and Sync.



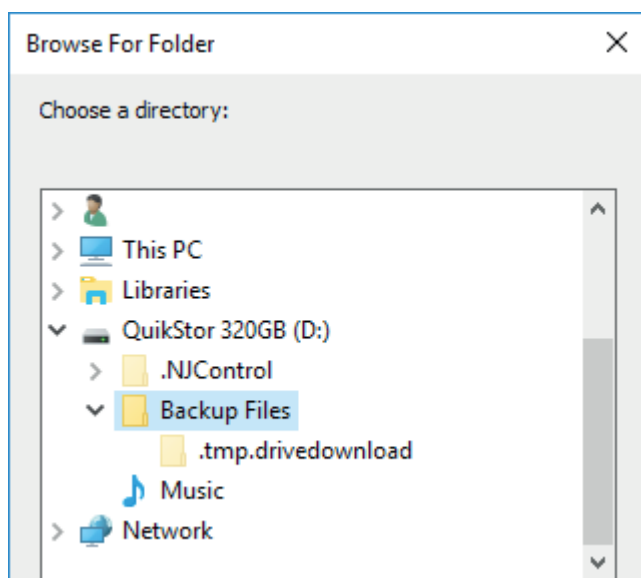
If a new media is inserted, the Google Backup and Sync icon in the taskbar shows an exclamation mark.

Click on the **Google Backup and Sync** icon.

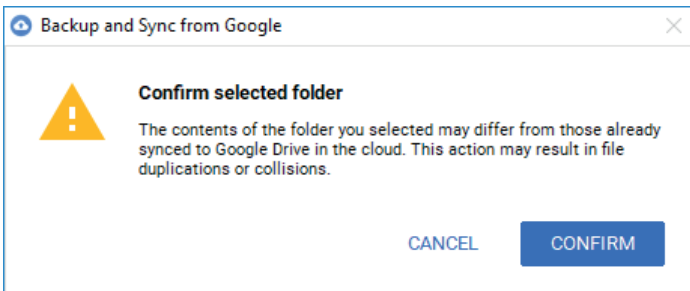


A popup message appears which informs you that the backup source (D:\Backup Files in our case) is disconnected.

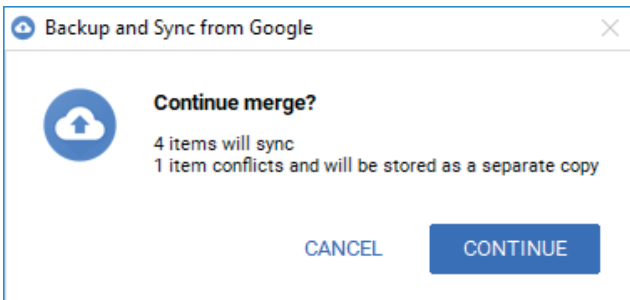
Click LOCATE to introduce the backup source again.



Browse your PC and select the new backup source. It is recommended, that the new media includes the same folder name as the previous media.



You need to confirm the selected folder.



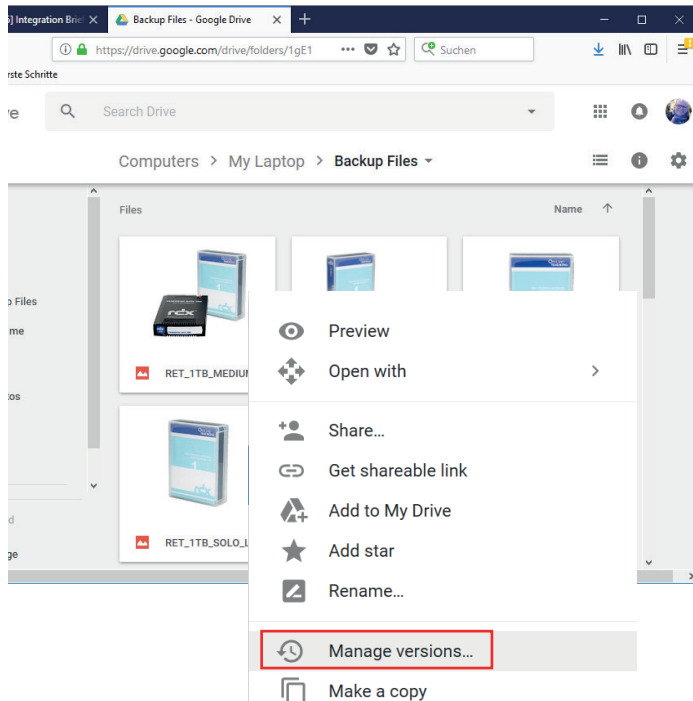
Google Backup and Sync compares the existing files on the media with the ones on Google Drive and synchronizes missing files on both sides.

If there are files with the same name but with different content, both versions will be kept.

This procedure ensures, that all involved RDX media and Google Drive are in sync.

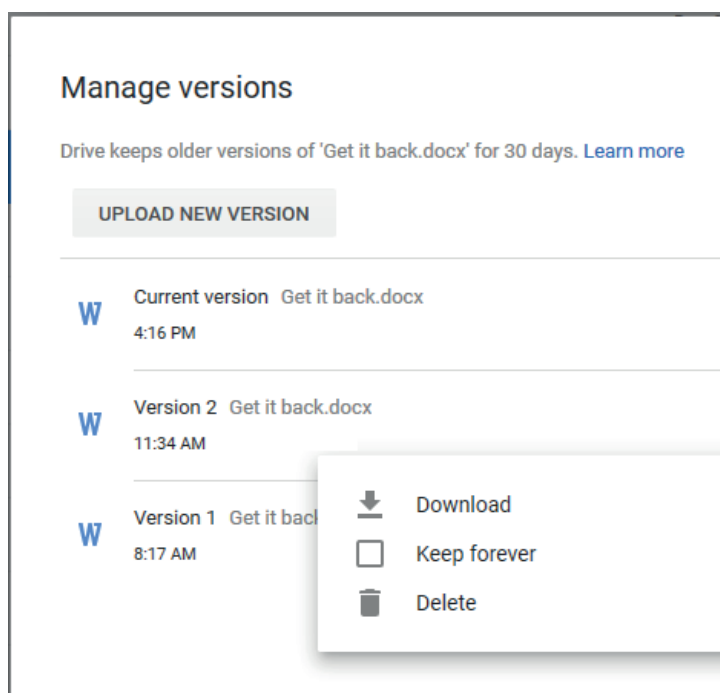
Manage Versions

Whenever a file is changed on the backup source (RDX in our case), the new version will be synchronized with google drive and displayed as the current version. In addition, Google Drive keeps the previous versions automatically 30 days, after the newer version has been published. This can be changed to infinite if desired.



To change the retention time of a previous version or to download or delete a previous version, right click on the appropriate file.

Select **Manage versions**.



All versions of this file will be displayed in a separate window. Select a version and choose either **Delete** to delete this version, **Keep forever** to keep this version (overrides the 30 days retention time) or **Download** to download this specific version.

Sales and support for Overland-Tandberg products and solutions are available in over 90 countries. Contact us today at sales@overlandstorage.com or sales@tandbergdata.com

IB_v1_jun20_2018

©2018 Sphere 3D. All trademarks and registered trademarks are the property of their respective owners. The information contained herein is subject to change without notice and is provided "as is" without warranty of any kind. Sphere 3D shall not be liable for technical or editorial errors or omissions contained herein.