

# Integrating NEO® Tape Libraries with Archiware P5 Backup



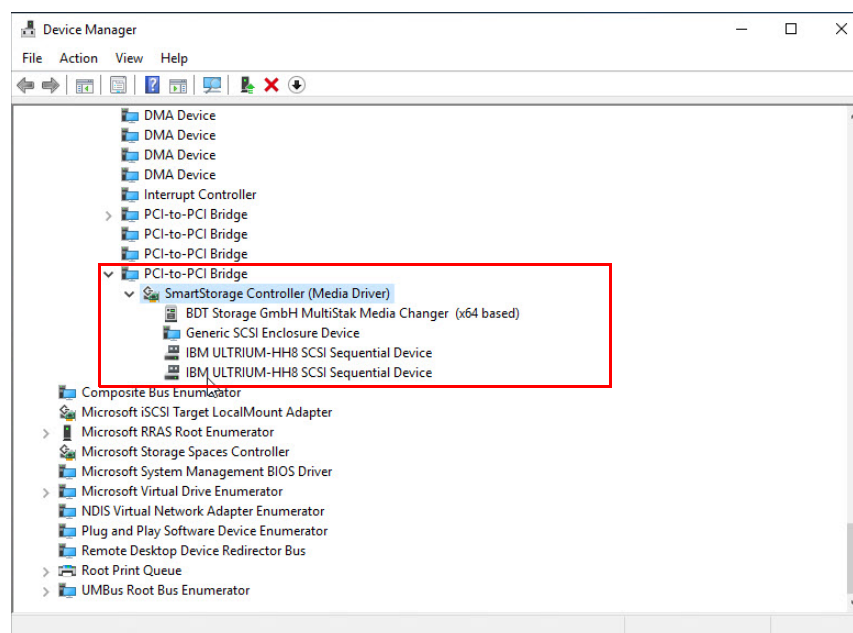
Archiware P5 supports many Overland-Tandberg tape libraries including NEOs StorageLoader (1U), NEOs T24 (2U), NEOxl 40 (3U), and NEOxl 80 (6U).

This guide explains how to configure a NEOxl 80 to work with Archiware P5 in a Windows-centric environment. This process is the same for the other supported NEO tape libraries (NEO StorageLoader, NEOs T24, and NEOxl 40).



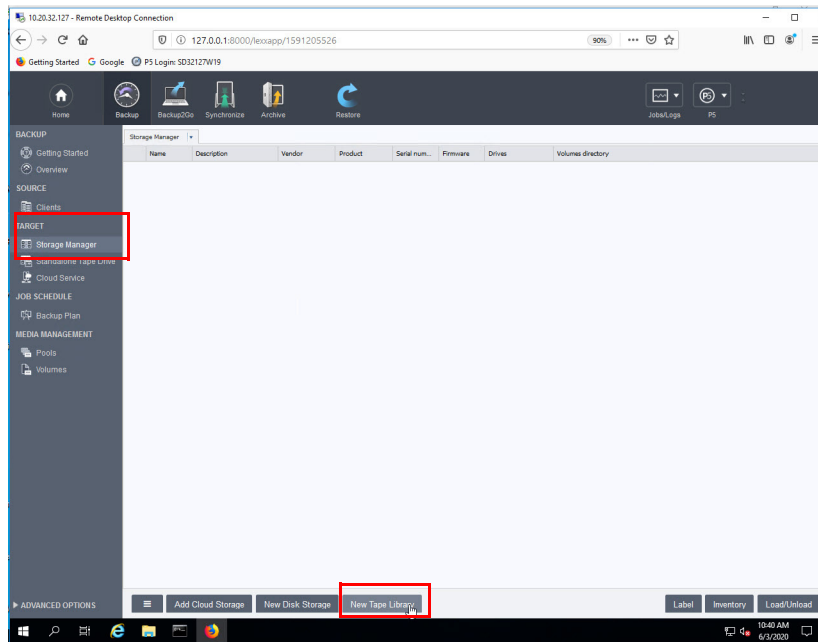
## Integrate NEOxl 80 with Archiware P5

1. Open **Windows Device Manager** and verify all devices are displayed.

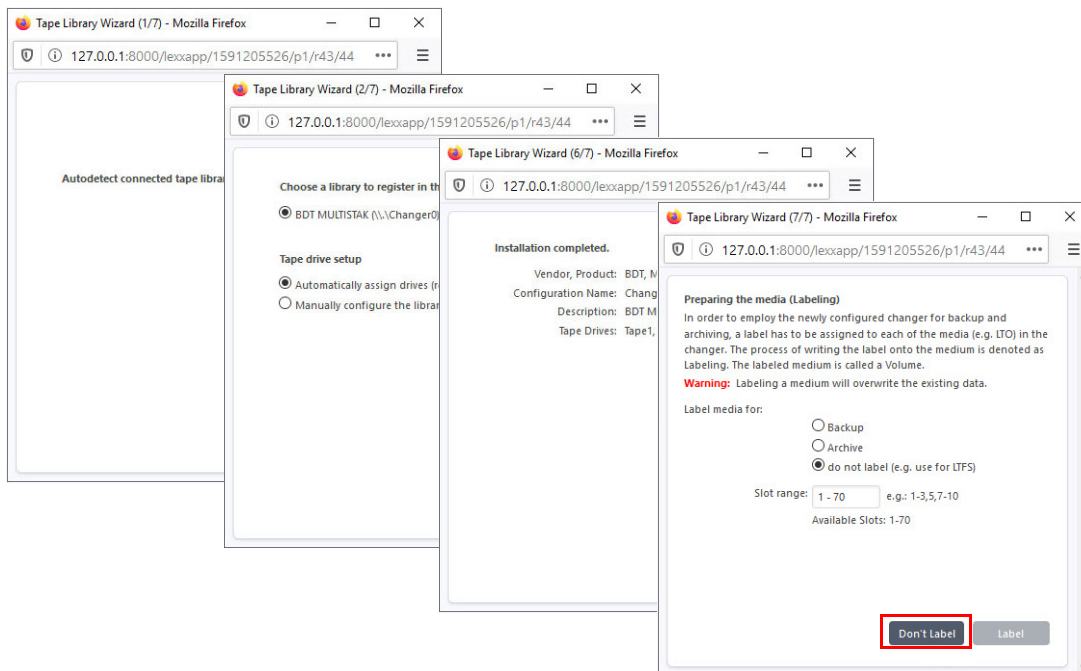


In this example, a NEOxl 80 and two LTO-8 drives are shown. The NEO and IBM tape device drivers must be installed for the Medium Changer and Tape Drives in order for Archiware P5 to use it.

2. In Archiware P5, navigate to **TARGET > Storage Manager** and at the bottom of the page, click **New Tape Library**.

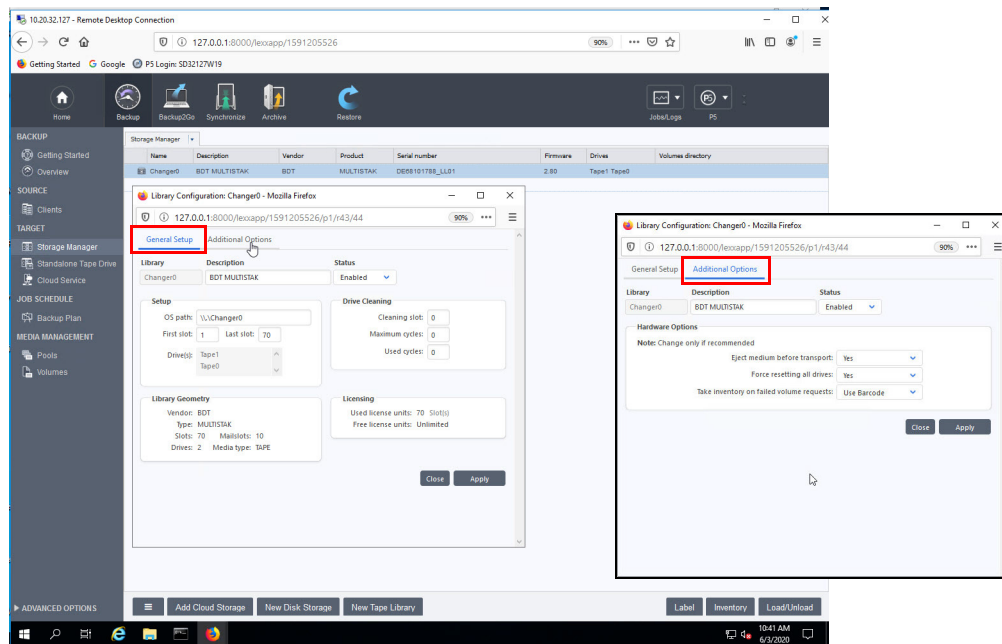


3. When the Tape Library Wizard appears, click **Next** three times. The NEOxl tape library is automatically discovered and configured. At the Preparing the media windows, click **Don't Label** (this process is done later).



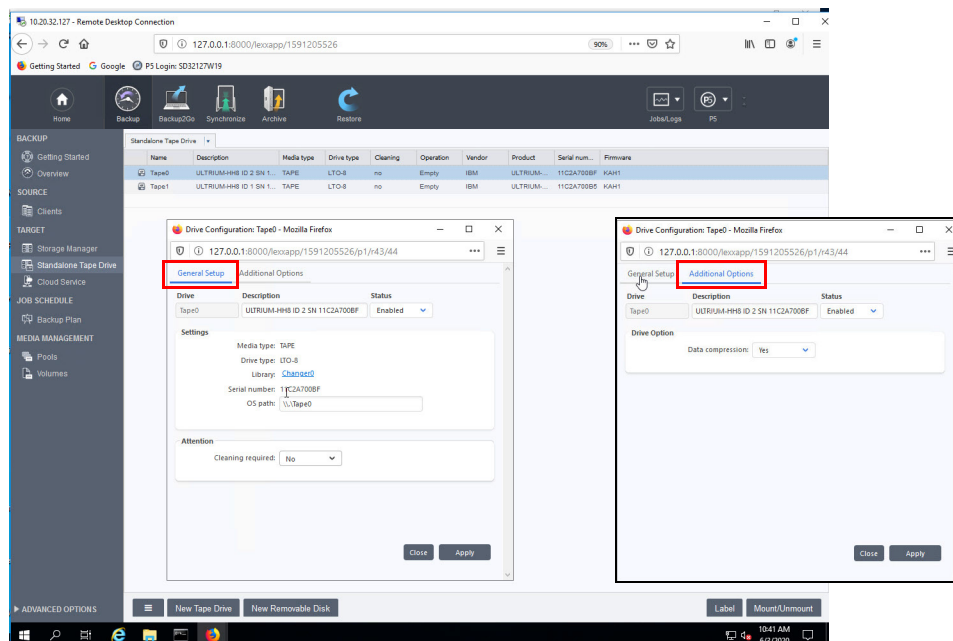
Once the Tape Library wizard completes, the NEOxl is online and available.

4. The detail properties and other configuration can be found by clicking the **listing**.



The General Setup is shown in the default tab. Click the Additional Options to see those settings.

5. The NEOxl tape drives can be found in the **Standalone Tape Drive** option. Additional details and configuration is available by clicking a drive listing.

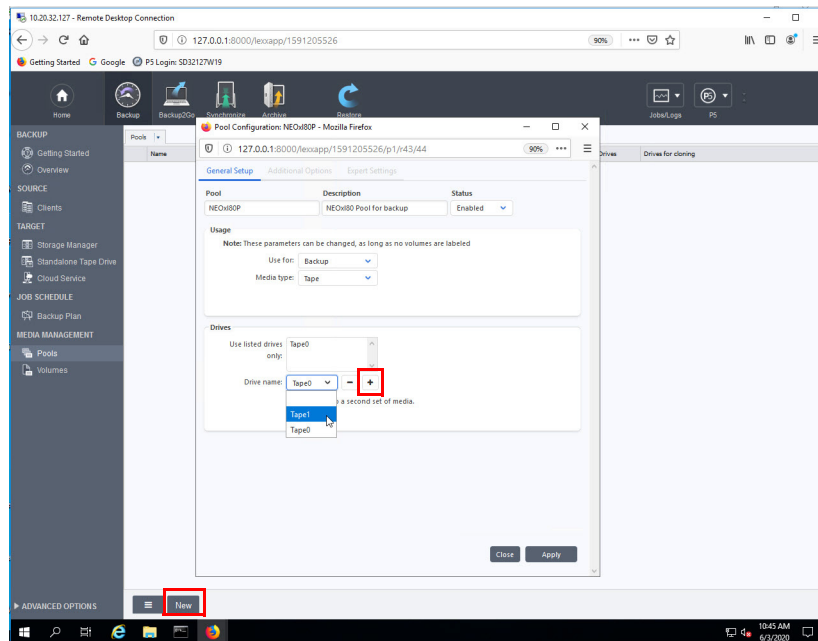


6. Under **MEDIA MANAGEMENT > Pools**, click **New**:

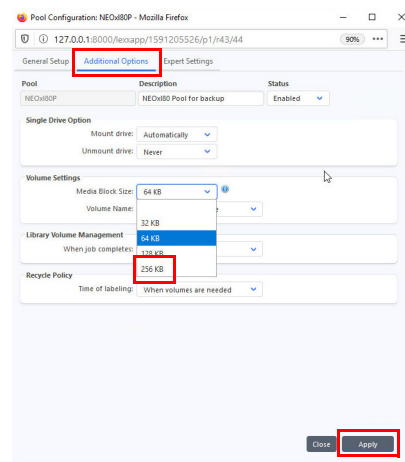
a. Provide the following **items**:

- Name of the Pool
- Description (optional)
- Use for Backup

b. Add the NEOxl tape drives (**Tape0 and Tape1**) by first selecting a drive and then clicking the Plus sign (+).

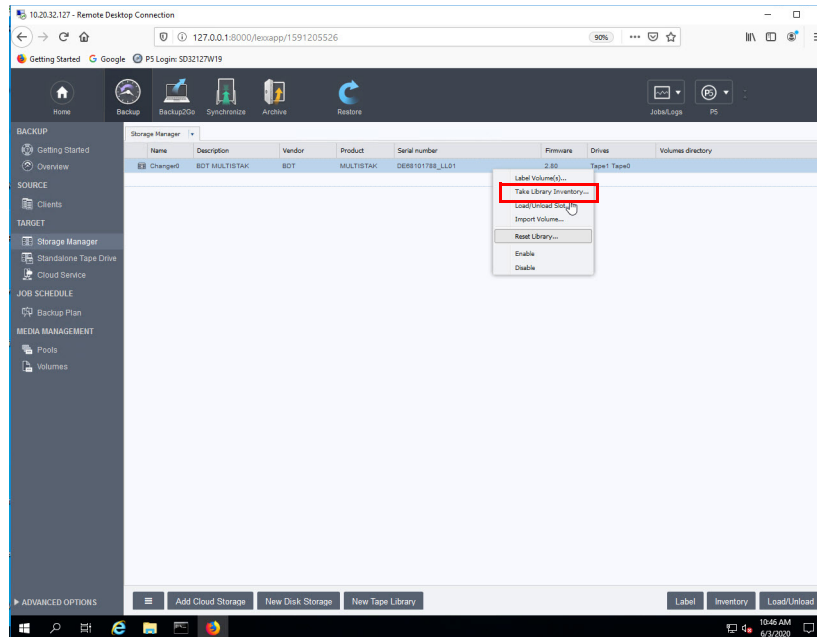


c. Select the **Additional Options** tab and change the **Media Block size** to **256 KB**.

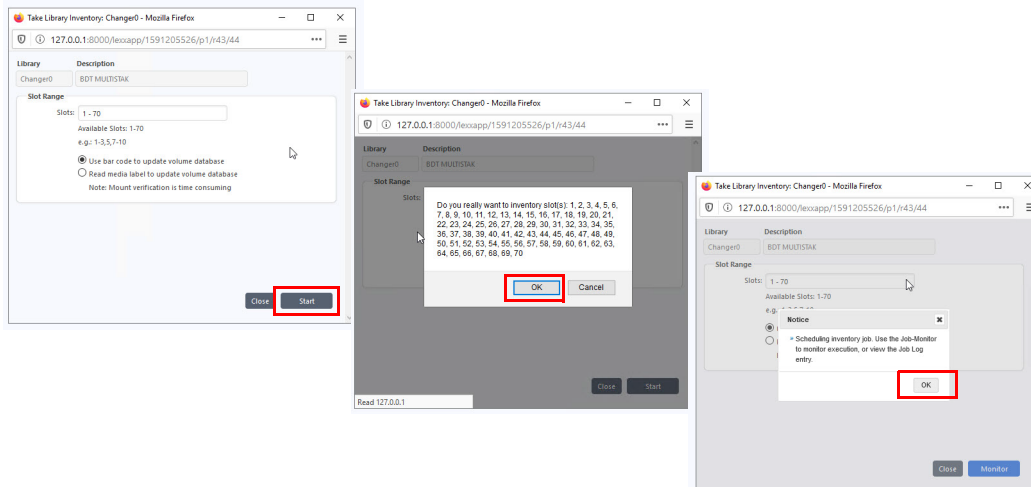


d. Click **Apply** to finish the NEOxl Pool configuration.

7. Under **TARGET > Storage Manager**, right-click the **NEOX1** listing and choose **Take Library Inventory**.

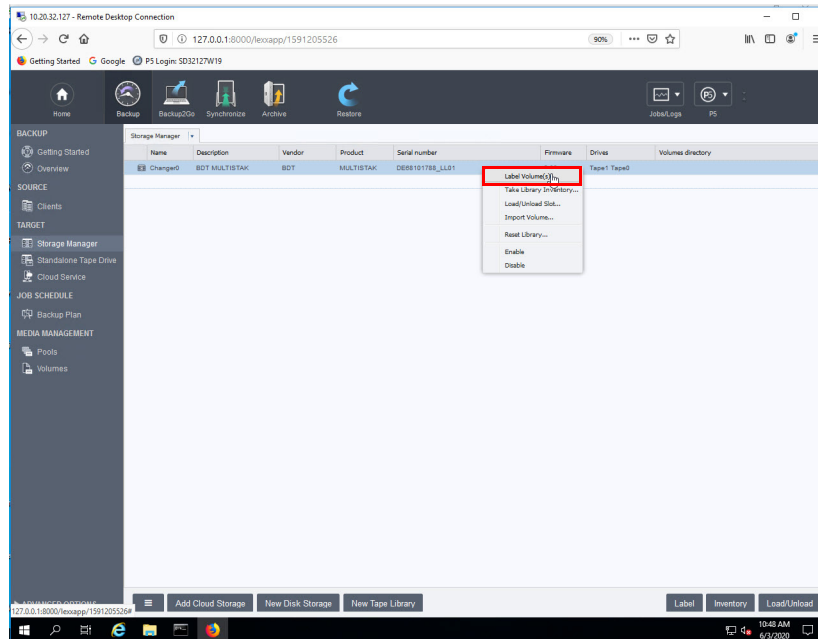


8. At the Inventory dialog box appears, click **Start** and then click **OK** twice to start the inventory of media.



As with every changer task, when done, the Job Monitor is automatically displayed.

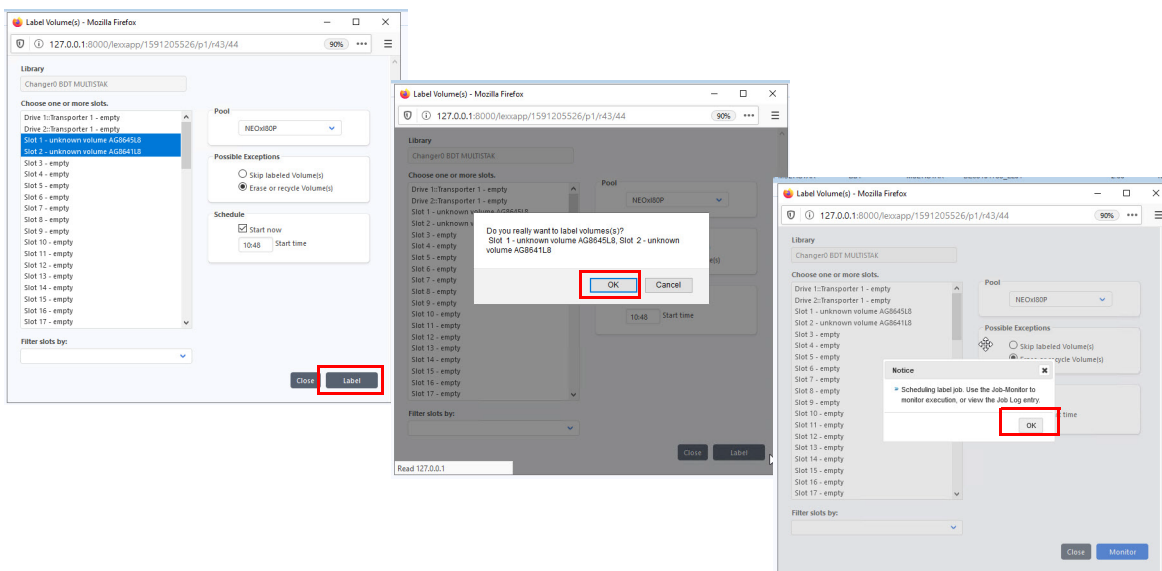
9. When the inventory is complete, under **TARGET > Storage Manager**, right-click the **NEOxl** listing and choose **Label Volume**.



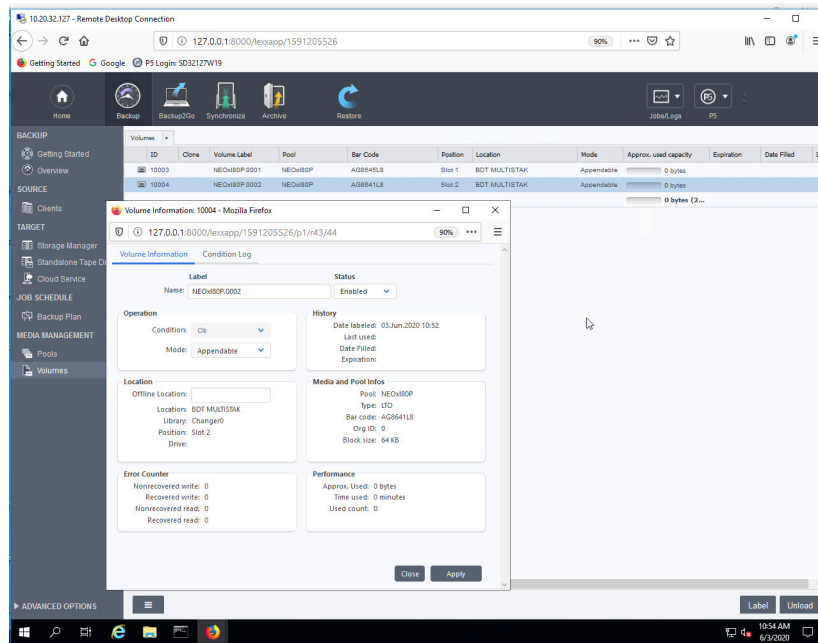
10. Select each of the media and label it:

**NOTE:** Note all data will be overwritten during the label process.

- Use the drop-down menu under Pool to select the NEOxl pool.
  - Under Possible Exceptions, select Erase or recycle Volume(s).
  - Click Label and then click OK twice to start the label operation.
- When done, the Job Monitor is automatically displayed



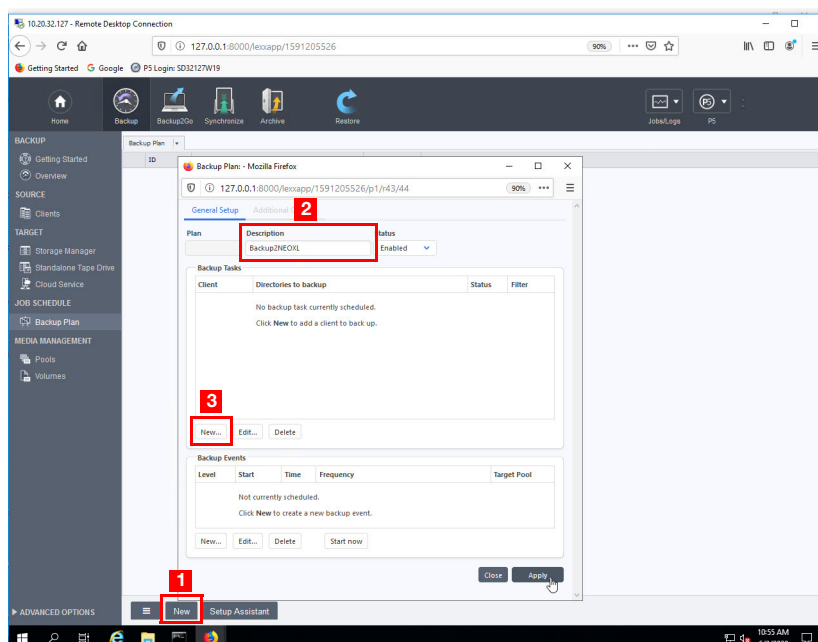
NEOx media listings and details (right-click) are available under **MEDIA MANAGEMENT > Pools**.



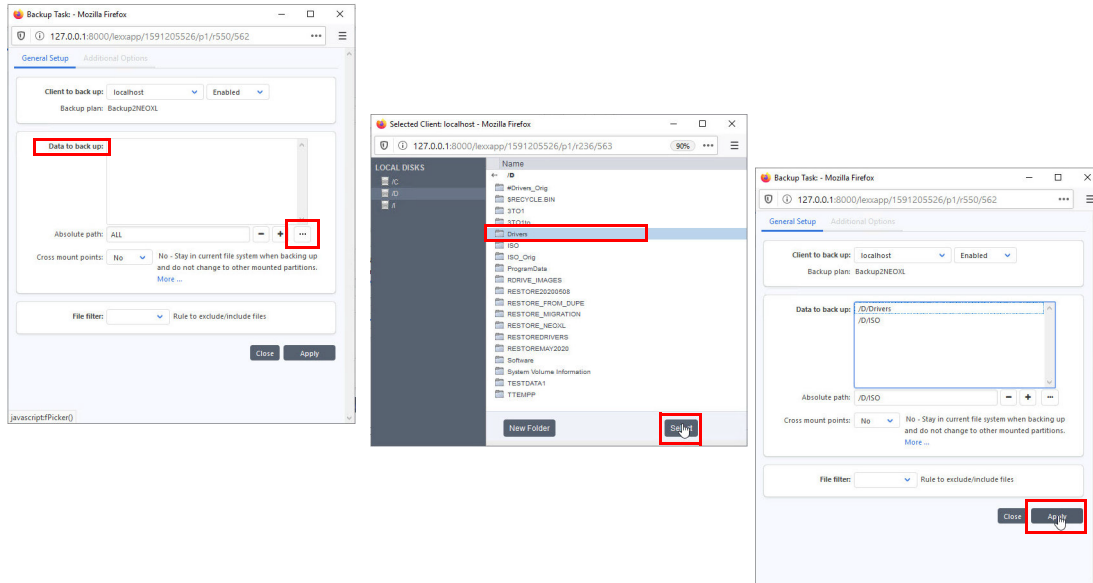
## Configure an Archiware P5 Backup

Use the following steps to configure a backup job.

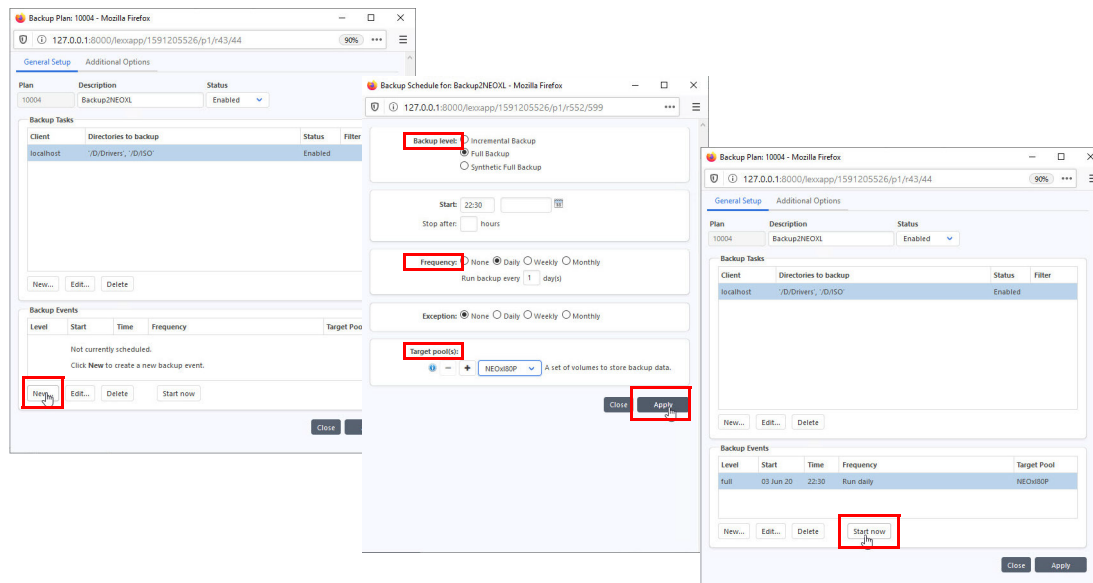
1. Under **JOB SCHEDULE > Backup Plan**, click **New** at the bottom of the page.
2. In the General Setup tab, enter a name for the backup plan in the **Description** field.
3. In the Backup Tasks section, click **New**.



4. In the Data to back up section, click the **Browse (...)** button.
5. Select the source to back up and click **Select**. (Repeat this process for **additional sources**.)
6. Click **Apply** to continue.

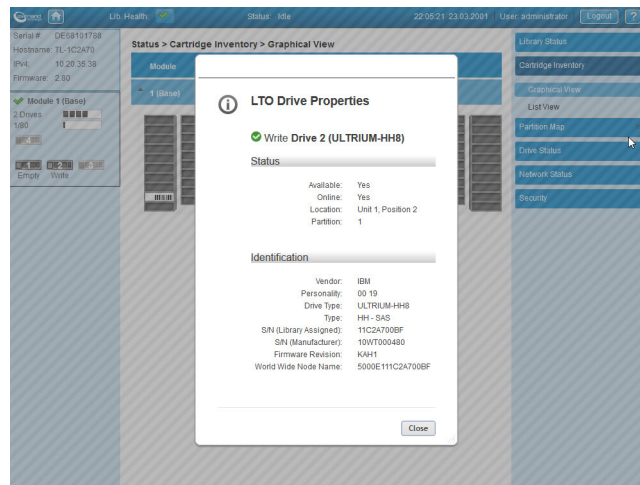
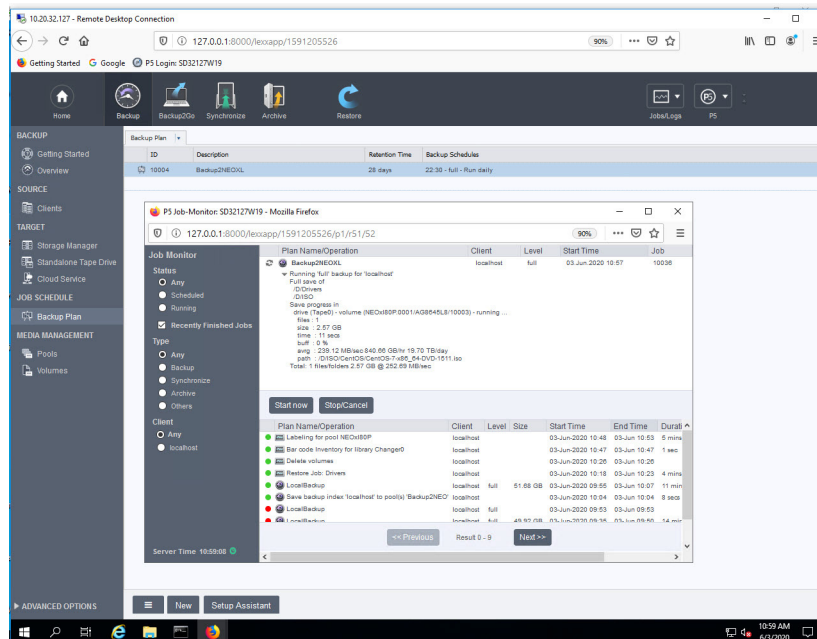


7. After the window refreshes, in the new Backup Events section, click **New**.
8. Provide a Backup level, Frequency, and Target pool, and then click **Apply**.
9. In the Backup Plan section, click **Start now**.





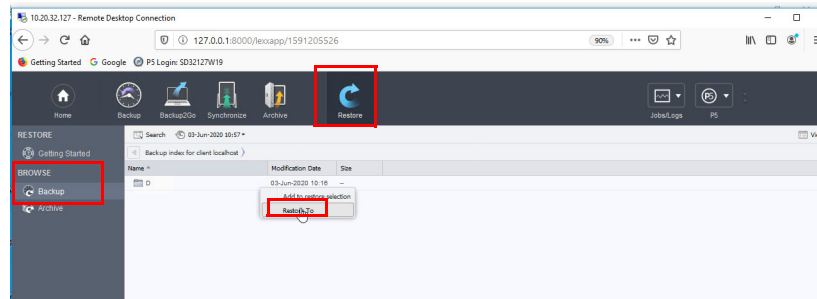
Once the backup is active, the monitor option is available and the current status appears. You can monitor the activity of the NEO through the NEO Remote Management Interface.



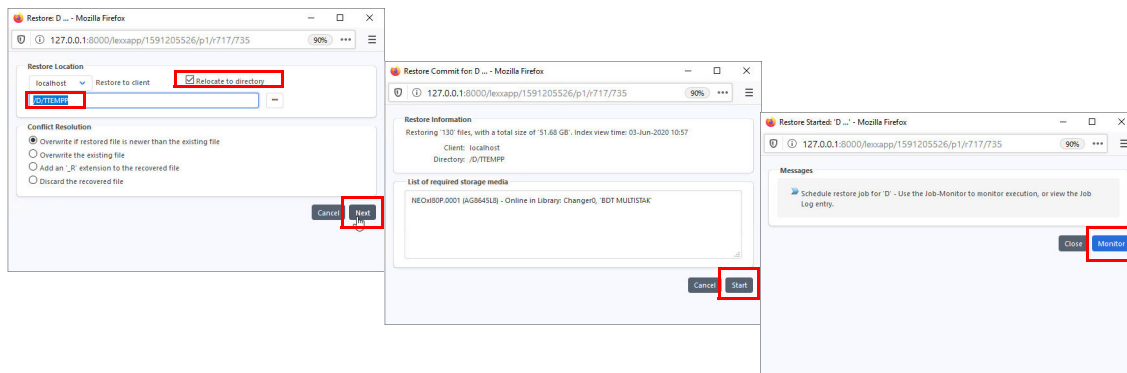
## Configure a Restore Job

When a successful backup job is achieved, the Restore icon appears in the top bar. Restoring files is granular in that you can restore either from the entire drive letter or down to a file level. In this example, we will restore from the drive letter.

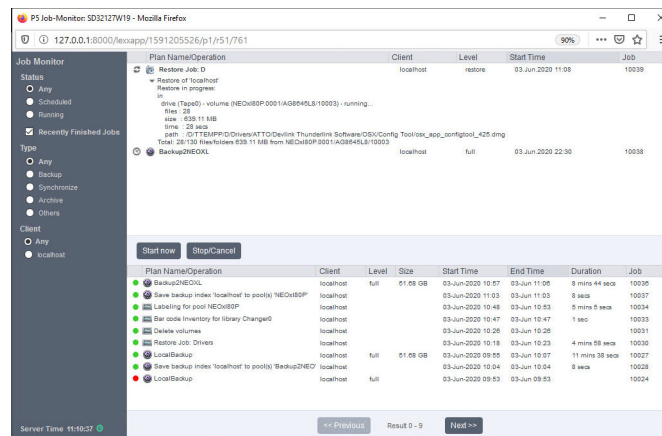
1. Click the **Restore** icon and then select **BROWSE > Backup**.
2. Right-click the drive letter for the restore and select the option **Restore To**.



3. In the Restore Location section, check to enable the Relocate to directory option, enter the path to restore to (or browse to a location), and click **Next**.
4. Click **Start** to begin the restore operation.
5. Click **Monitor** to view the active restore job.



An active **Restore Job Monitor** is available and the current status appears.



Sales and support for Overland-Tandberg products and solutions are available in over 90 countries. Contact us today at [salesemea@overlandtandberg.com](mailto:salesemea@overlandtandberg.com). Visit [OverlandTandberg.com](http://OverlandTandberg.com).