

Integrating NEO® Tape Libraries with Micro Focus Data Protector 10



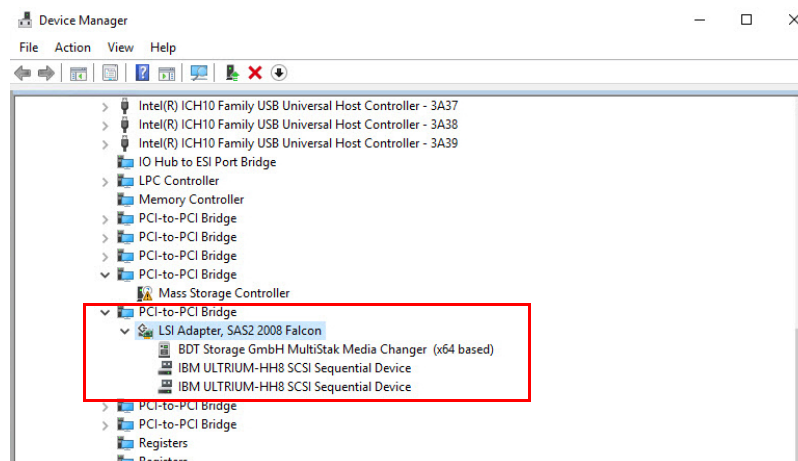
Micro Focus Data Protector 10.4 (formerly from HP) supports many Overland-Tandberg tape libraries including NEOs StorageLoader (1U), NEOs T24 (2U), NEOxl 40 (3U), and NEOxl 80 (6U).

This guide explains how to configure a NEOxl 40 to work with Data Protector in a Windows-centric environment. How to configure tape drive encryption is also covered. These processes are the same for the other supported NEO tape libraries (NEO StorageLoader, NEOs T24, and NEOxl 80).



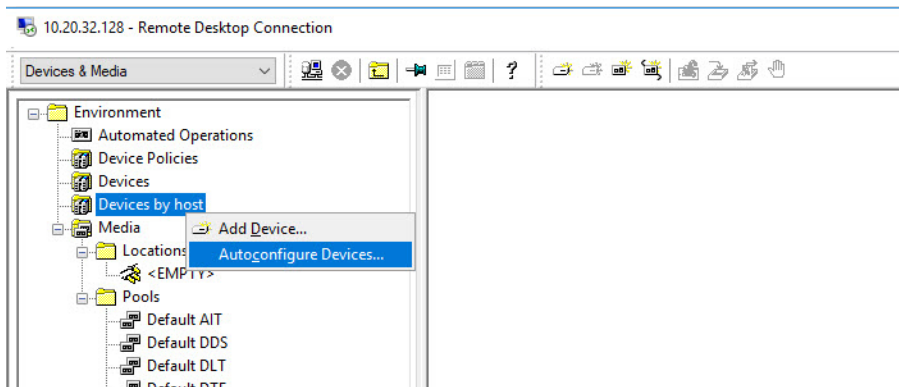
Integrate NEOxl 40 with Data Protector 10.4

1. Open Windows Device Manager and verify all devices are displayed.

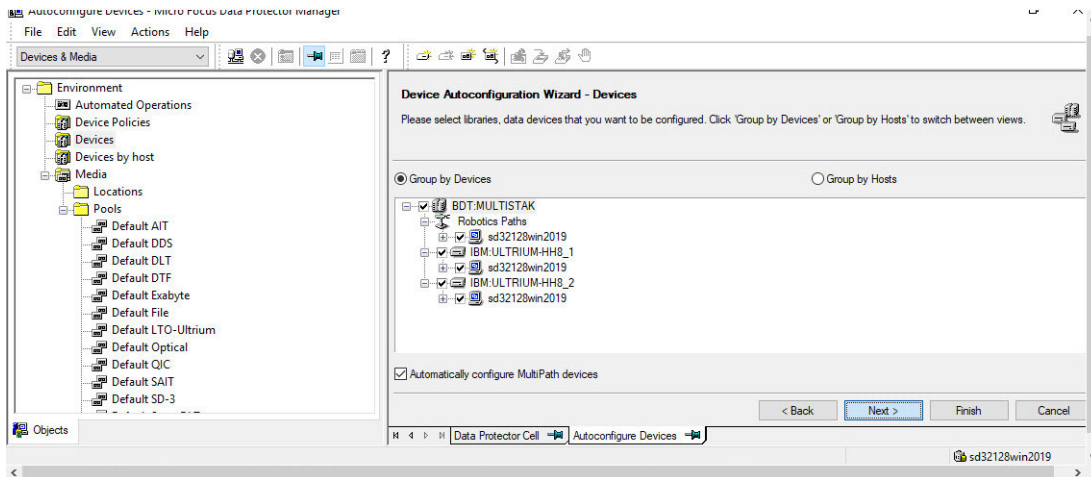


In this example, a NEOxl 40 and two LTO-8 drives are shown. The NEO and IBM tape device drivers must be installed for the Medium Changer and Tape Drives in order for Data Protector to use it.

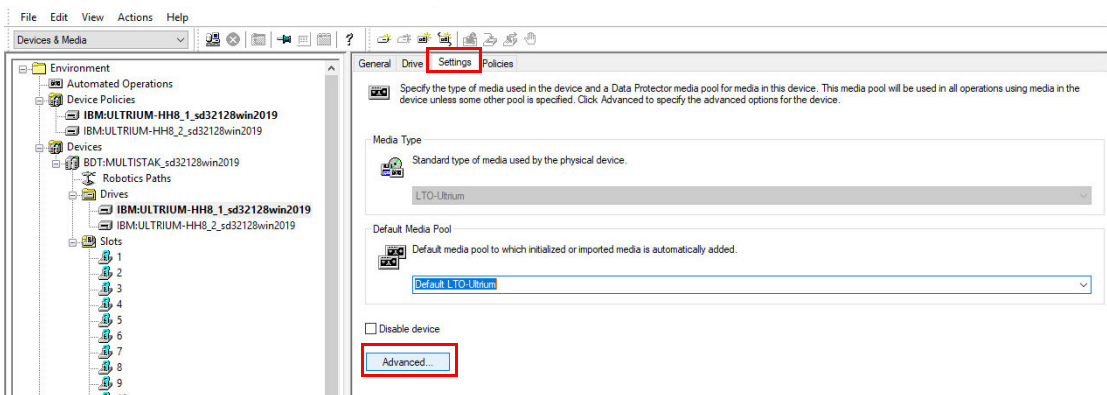
2. In Data Protector Manager navigate to Devices & Media.
 - a. Right-click **Devices by host** and select **Autoconfigure Devices**.



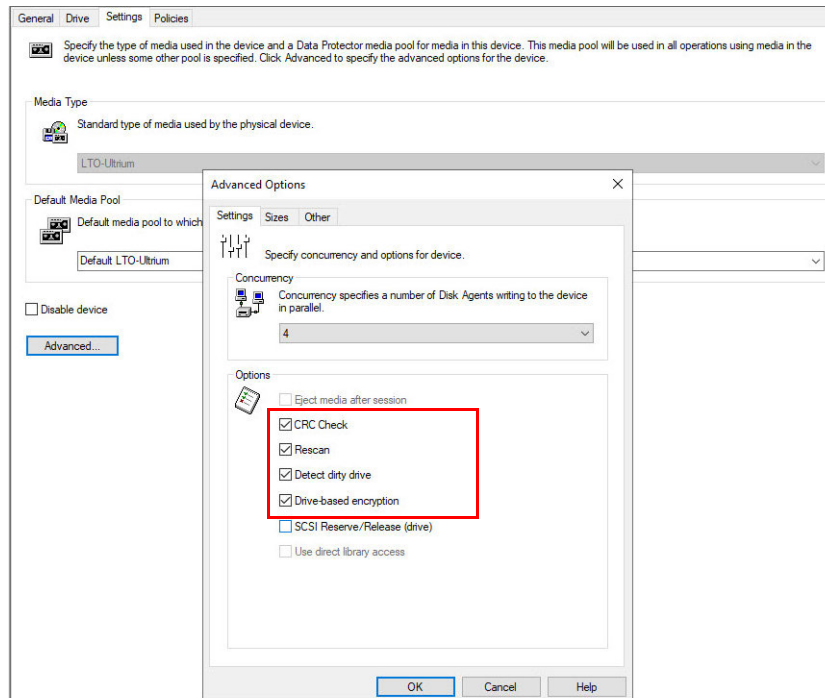
- b. Once the discovery process completes, use the Device Autoconfiguration Wizard verify the NEO and its tape drives are discovered by enabling the check boxes next to each of the NEO devices, and then click **Next**.



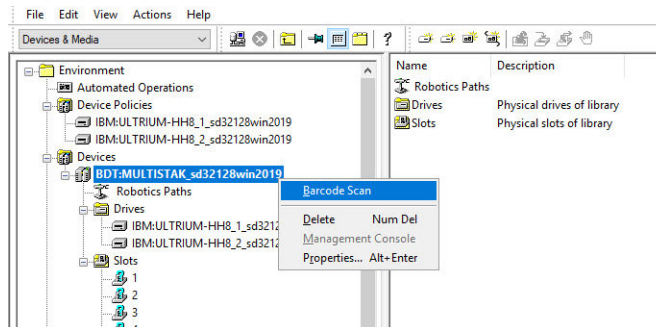
- c. Once the NEO is configured, browse its tape drives and configure additional parameters for each of them by selecting the **Settings** tab and then clicking **Advanced**.



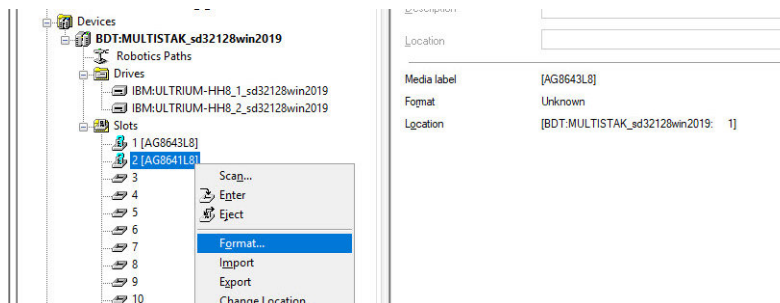
- d. In the **Advanced Options** pop-up window, add a check to each of the parameters as shown, and click **OK**. Repeat these steps for each tape drives in the NEO.



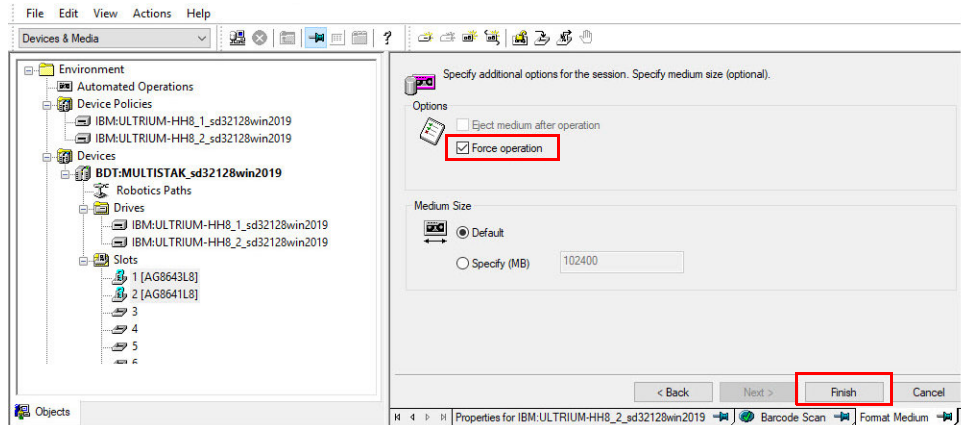
- e. Right-click the NEO and select **Barcode Scan**.



- f. Right-click each of the media discovered, and choose **Format** to overwrite any content.

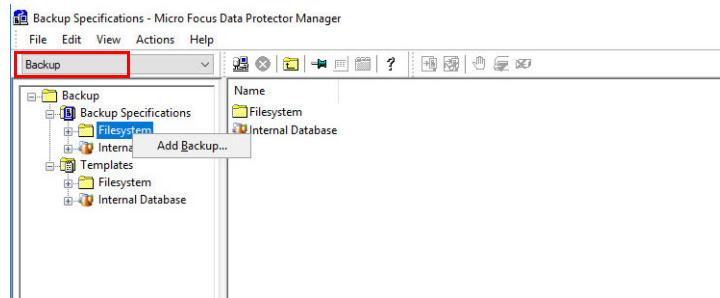


g. Check the **Force Operation** option, and then click **Finish** to complete the format.

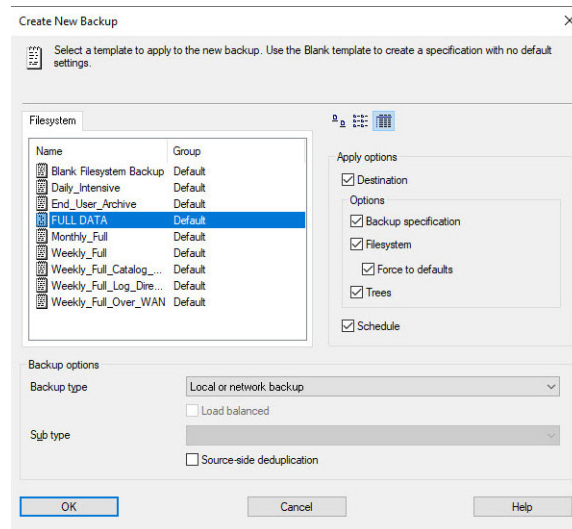


3. Use the following steps to configure a backup job.

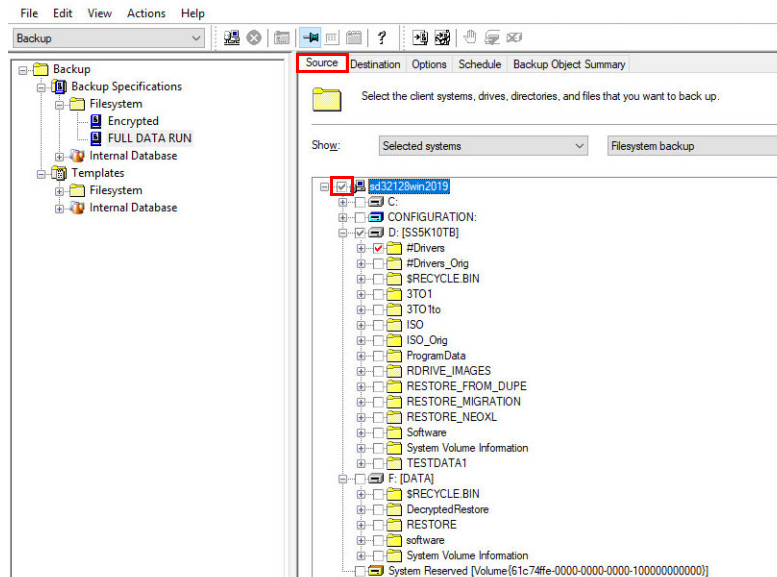
- a. Choose **Backup** from the drop-down menu at the top.
- b. Under **Backup Specifications**, right-click **Filesystem** and select **Add Backup**.



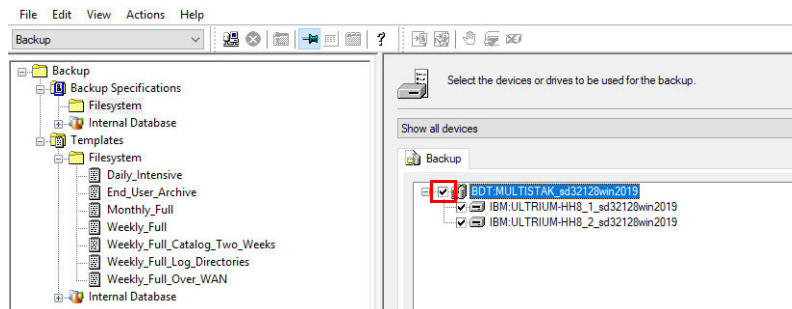
c. Select the type of backup you want (for our example, it is a **FULL DATA** backup).



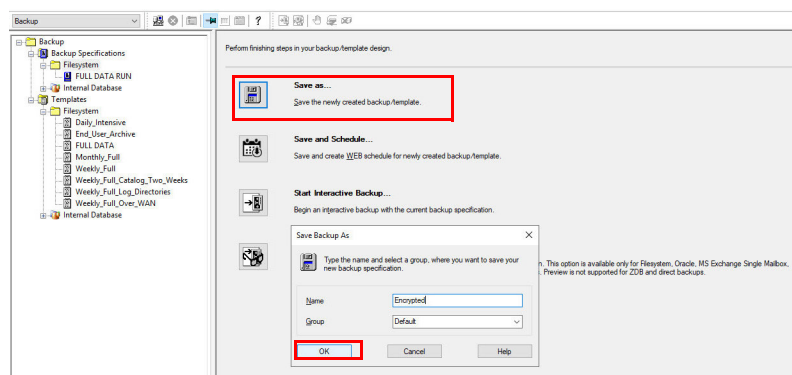
d. Under the **Source** tab, check the box for **backup**.



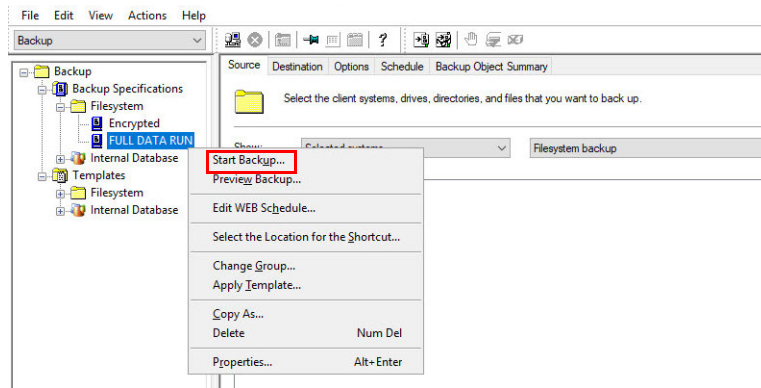
e. Under the **Destination** tab, add a check to the **NEO** box, and click **Next**.



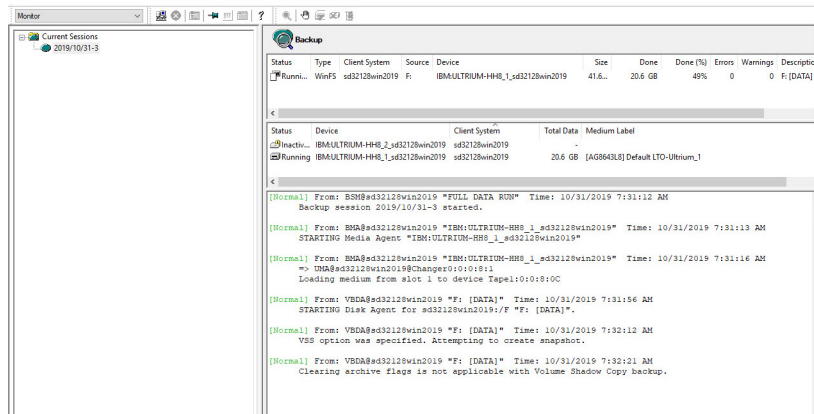
f. Click **Save as**, provide a new name for the job, and click **OK**.



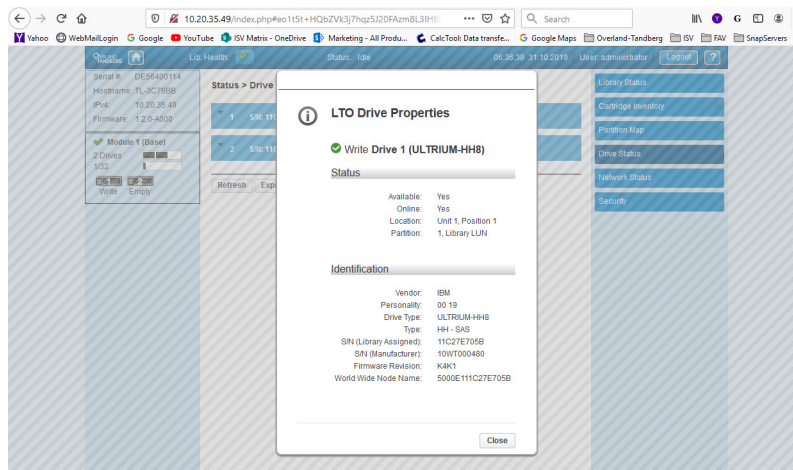
g. Right-click the new backup job and select **Start Backup**.



h. Once the backup goes active, the monitor output is displayed.



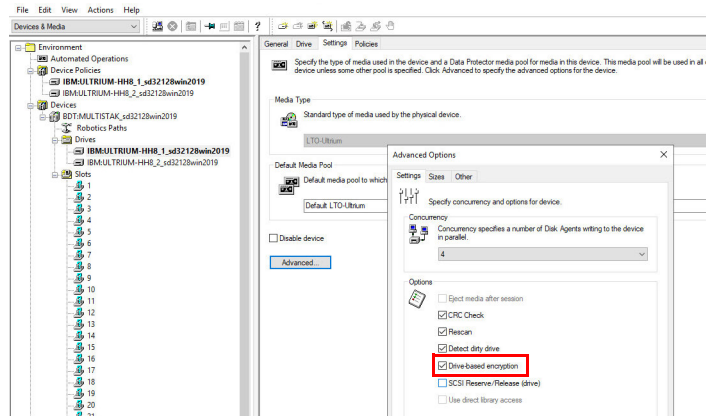
The NEO Remote Management Interface can be used to monitor the active tape drives.



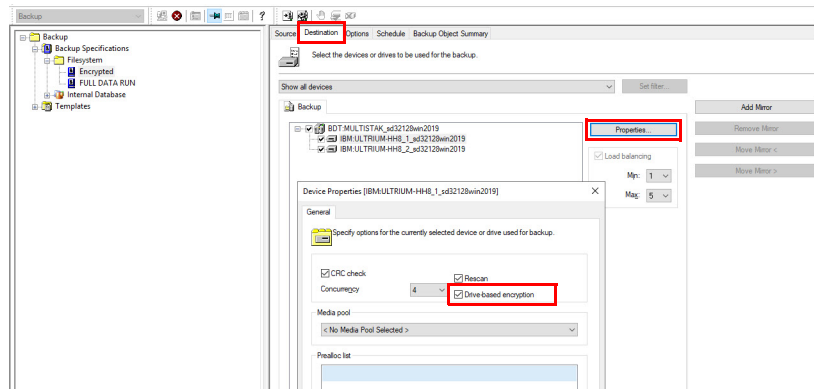
Data Protector 10.4 Encryption

Data Protector supports drive-based encryption. No passphrase is needed when configuring encryption. The encryption keys are handled in the Data Protector Keystore Cell Server which can be a different server than the Data Protector Server.

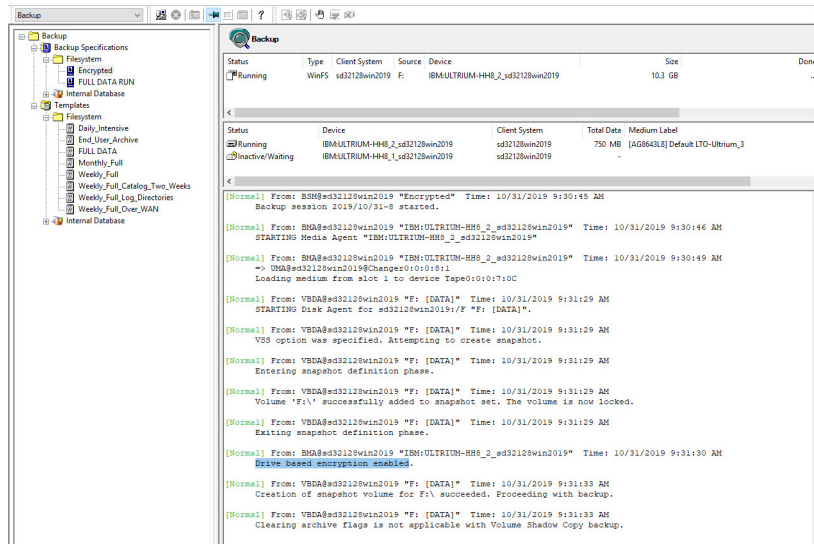
1. To configure Data Protector Drive-based Encryption, use the following steps.
 - a. Navigate to **Device & Media > Tape Drive > Settings > Advanced Option** and verify the **Drive-based encryption** is enabled.



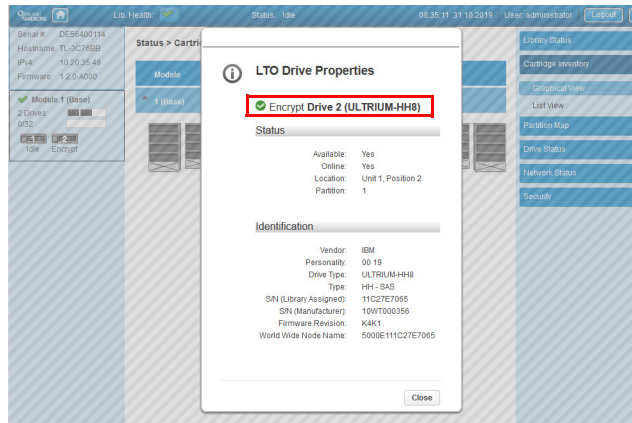
- b. Navigate to **Backup > Edit the backup policy** and, in the **Destination** tab, select a tape drive and click **Properties**.
 - c. In the General tab that opens, enable the **Drive-based encryption** option.



d. As the active encrypted backup runs, the Data Protector monitor shows in its active log that Drive-based encryption is enabled.



e. The NEO RMI also shows the status of Encrypt for the drive. Likewise the drive status shows Decrypt during a restore of an encrypted media.



Likewise, the drive status shows Decrypt during a restore of an encrypted media.

For more information on compatibility, please visit Overland-Tandberg website:
<https://www.tandbergdata.com/us/index.cfm/support/compatibility/compatibility/>

NEO Applications Team
 Overland-Tandberg