

Integrating NEO® Tape Libraries and with Veritas™ Backup Exec 20

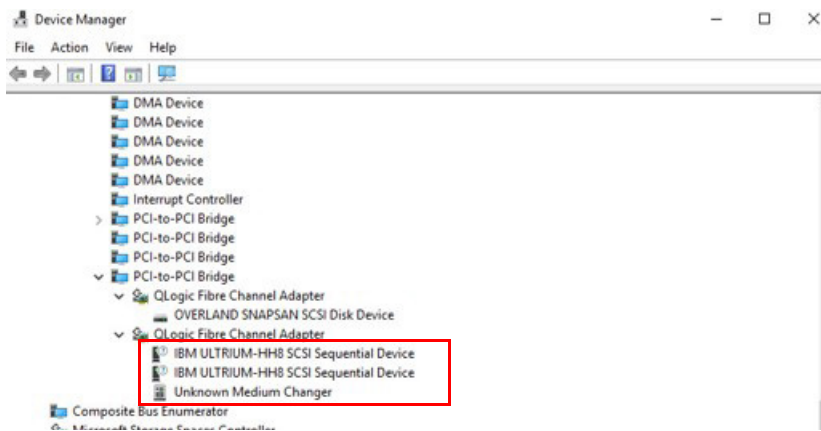


Backup Exec 20 from Veritas supports many Overland-Tandberg tape libraries including NEOs StorageLoader (1U), NEOs T24 (2U), NEOxl 40 (3U), and NEOxl 80 (6U).

This guide explains how to:

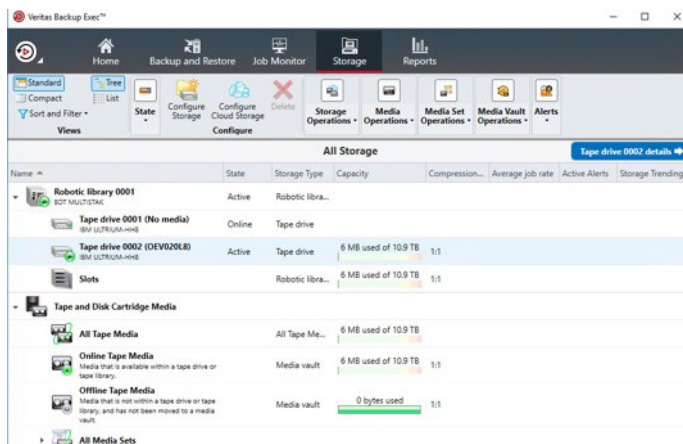
- Configure a NEOxl 80 to work with Backup Exec 20. The process is the same for the other supported NEO tape libraries.
- Configure tape drive encryption.

Integrate NEOxl 80 with Backup Exec 20



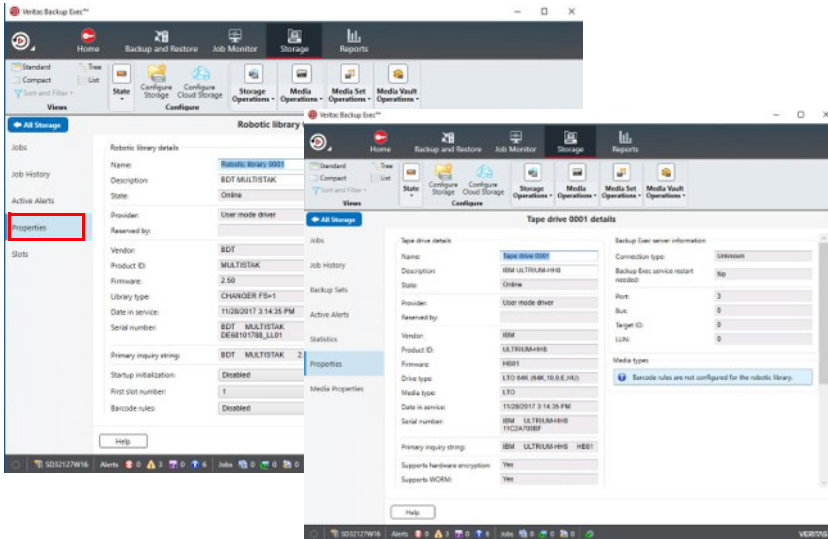
1. Open **Windows Device Manager** and verify the library and tape drives are visible.

In this example, a NEOxl 80 and two LTO-8 drives are shown. Backup Exec communicates directly with the libraries. No drivers are required for it to work with them.

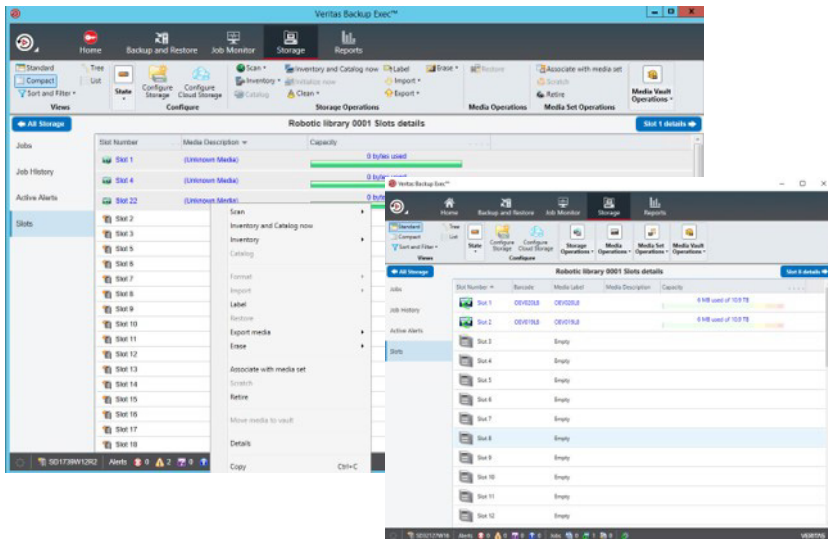


2. Launch Backup Exec and select the **Storage** tab.

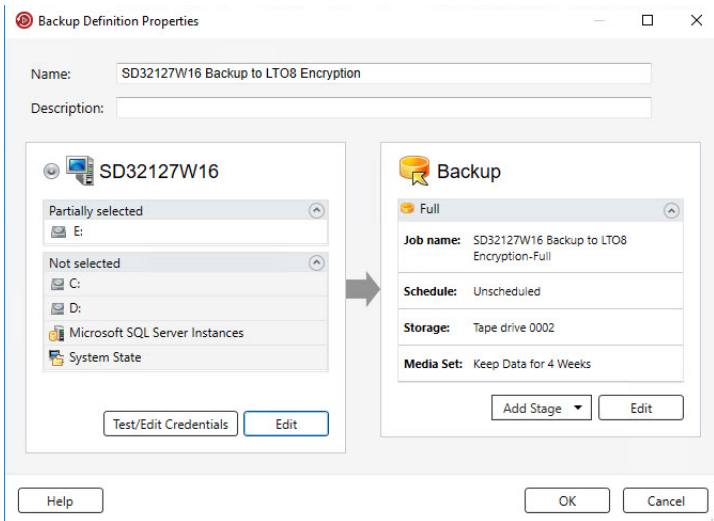
The Overland-Tandberg tape library, tape drives, and slots are automatically discovered.



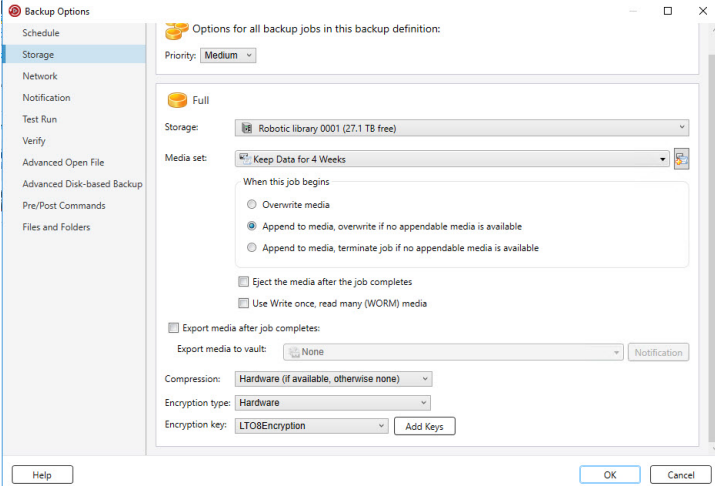
3. If needed, you can change the block size and compression **properties** of the library and tape drives.



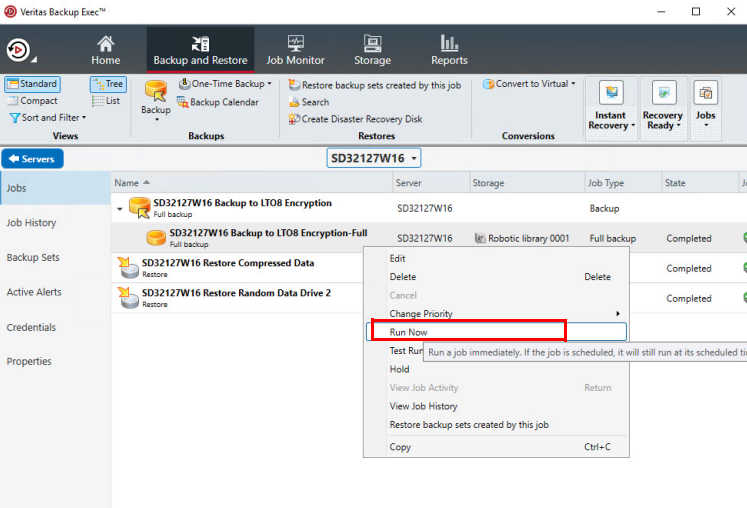
4. Before running a Backup Exec backup, it may be necessary to **inventory** all the tapes and **erase** them.



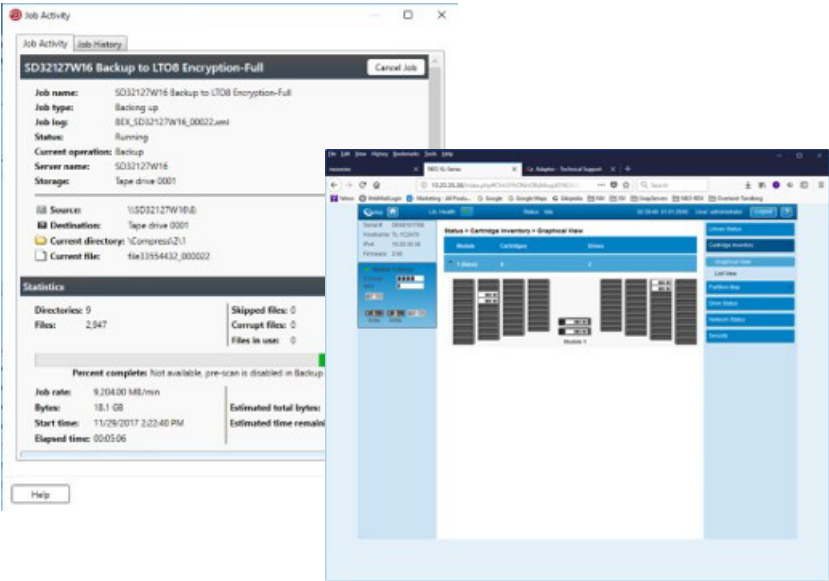
5. Create a Backup Exec backup policy to **tape**.



6. Select the **target** library and any additional **options** as required.



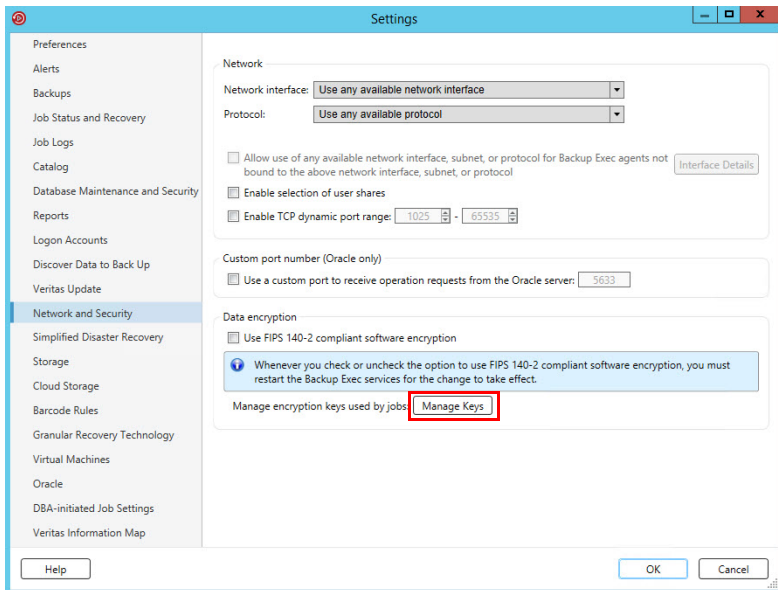
7. From the **Jobs** drop-down menu, select **Run Now**.



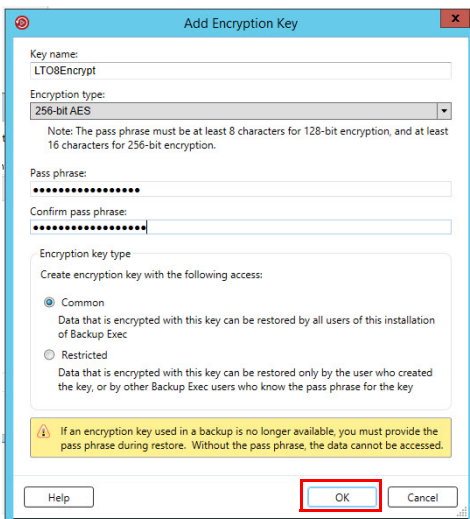
The backup job can be **monitored** from either Backup Exec or the Remote Management Interface.

Backup Exec 20 Encryption

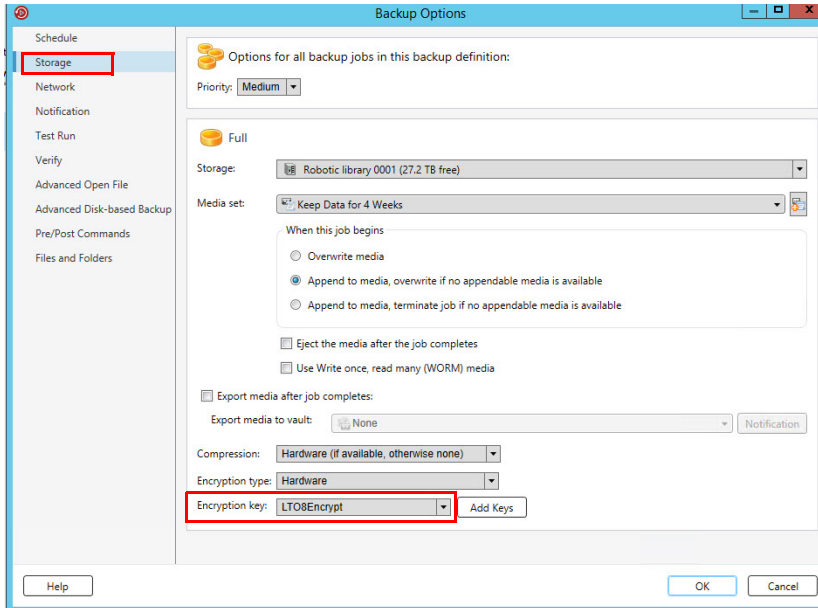
Backup Exec supports Encryption type Hardware. NEO support LTO-5 and higher generation tape drives which supports T10 encryption standards. Backup Exec manages the encryption keys that are used to access the encrypted data on tape. Use the following procedure to configure it.



1. Go to **Configuration and Settings**.
2. Select **Backup Exec Settings**.
3. Select **Network and Security** on the left side.
4. Click **Manage Keys**.



5. In the Encryption Key Management window, click **New**.
6. In the **Add Encryption Key** window:
 - a. Enter a **Key Name**.
 - b. Select **256-bit AES** as the Encryption Type.
 - c. Provide a **Pass Phrase** and confirm.
 - d. Click **OK**.



7. In the backup job, select **Backup Options**.

8. Select **Storage** on the left side.

9. Use the Encryption Key drop-down menu to select the **key** you just created.

10. Click **OK**.