

Integrating NEO® Tape Libraries with Arcserve® 18

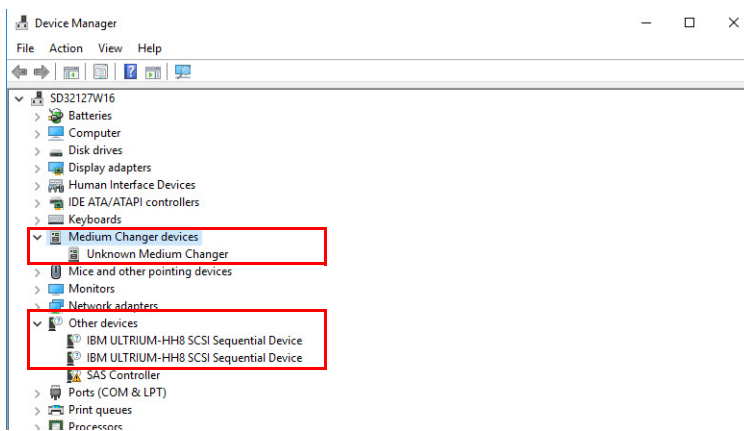


Arcserve 18 supports many Overland-Tandberg tape libraries including NEOs StorageLoader (1U), NEOs T24 (2U), NEOxl 40 (3U), and NEOxl 80 (6U). Because Arcserve 18 communicates directly with the NEO libraries, no drivers are required.

This guide explains how to:

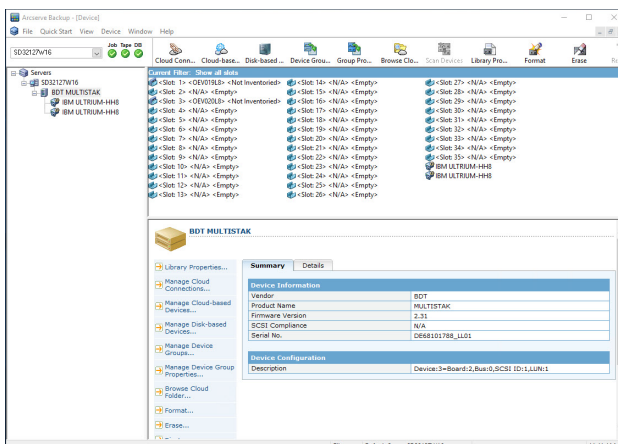
- Configure a NEOxl 80 to work with Arcserve 18. The process is the same for the other supported NEO tape libraries (NEO StorageLoader, NEOs T24, and NEOxl 40).
- Configure tape drive encryption.

Integrate NEOxl 80 with Arcserve 18



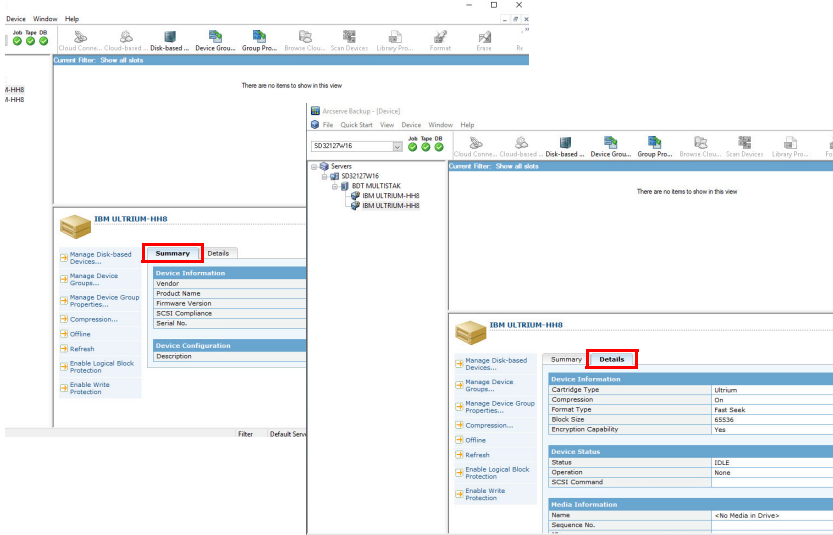
1. Open **Windows Device Manager** and verify all devices are displayed.

In this example, a NEOxl 80 and two LTO-8 drives are shown. As drivers are not required, the library shows up as an Unknown Medium Changer.

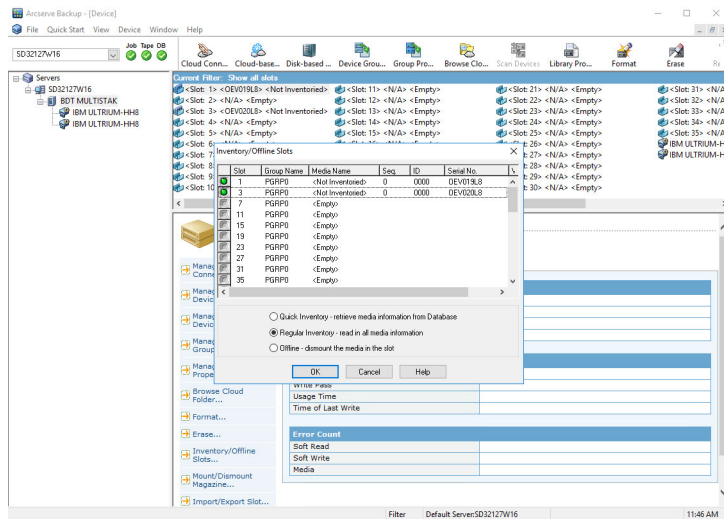


2. Overland tape library, tape drives, and slots are automatically discovered. No additional configuration is needed.

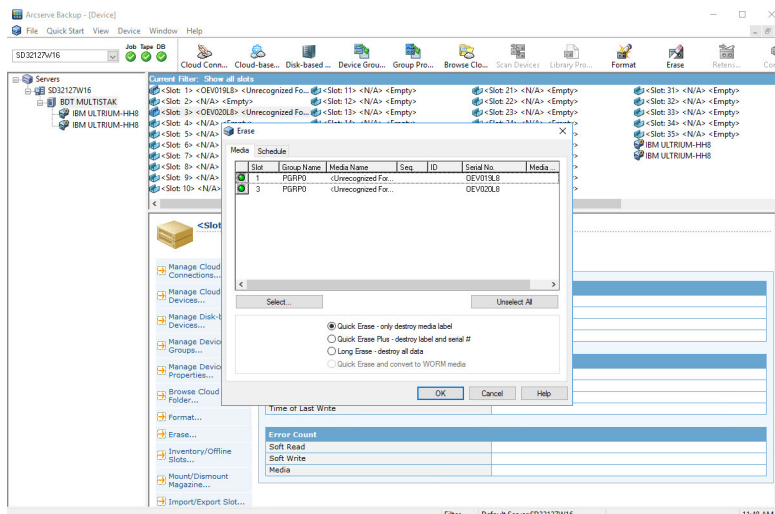
3. Clicking the **Details** tab shows the LTO-8 tape drive properties.

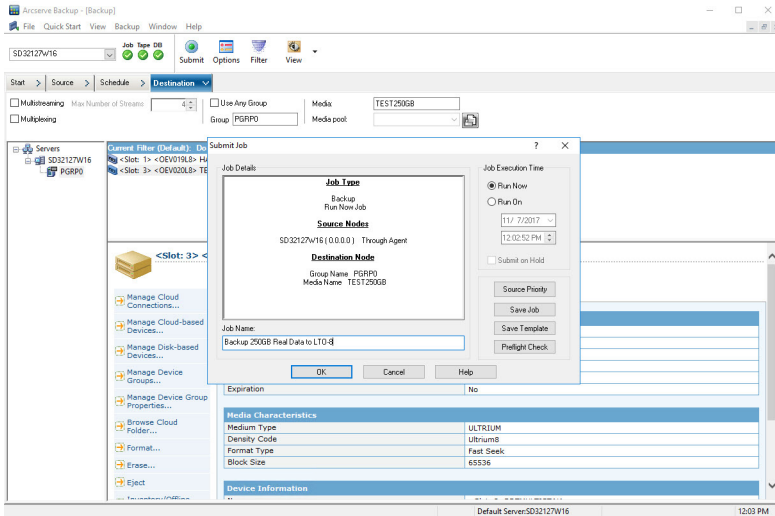


4. An inventory of all the tape media is required before the tapes can be used with Arcserve.



5. A **Quick Erase** of all the tape media is required prior to running an Arcserve backup job.



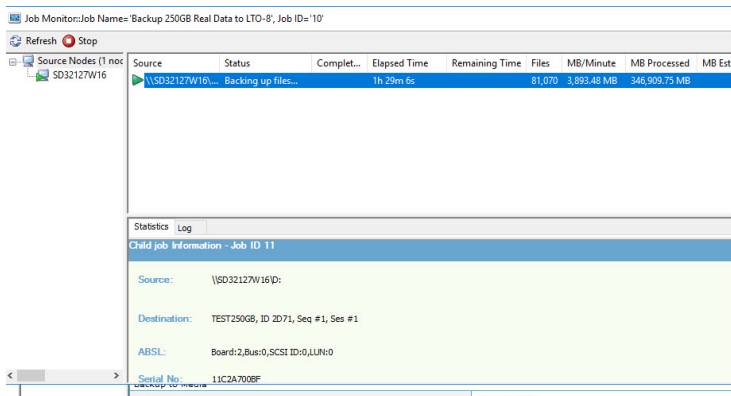


6. Create a **backup job** using Arcserve Backup options.

a. **Configure** the Source for backup, Schedule, and Destination.

b. Select **Run Now**.

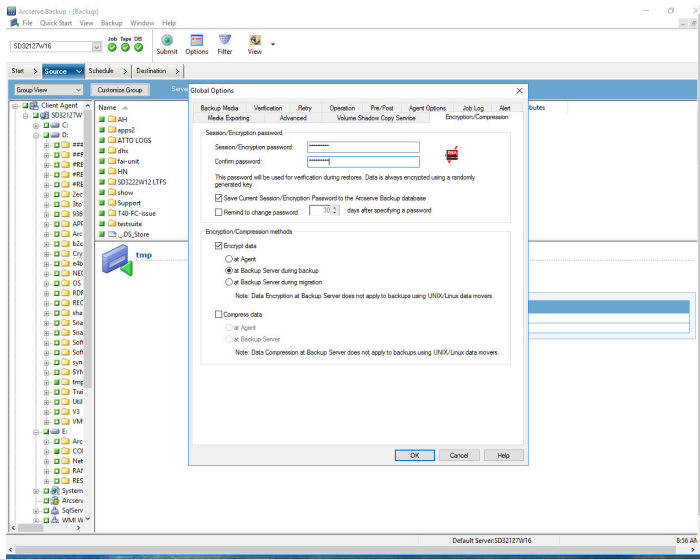
c. Click **OK**.



The backup job can be **monitored** from the Arcserve software.

Arcserve 18 Encryption

Arcserve 18 supports tape drive encryption. Use the following procedure to configure it.



1. In the backup job **Global Options**, enter and confirm a Session/Encryption password.
2. Check to enable **Encrypt Data** and select the option “at Backup Server during backup.”
3. Click **OK**.