

Technical Support

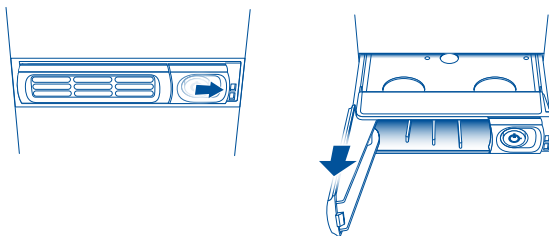
Visit the Support section of the Tandberg Data web site (<http://www.tandbergdata.com>) for the following:

- Knowledge base articles
- Troubleshooting information
- Product documentation
- Software updates
- Product warranty and registration
- Email and phone technical support

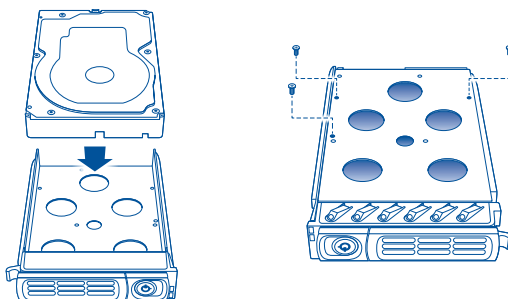
Installing Disks

Follow these instructions to install one or more disks into your NAS.

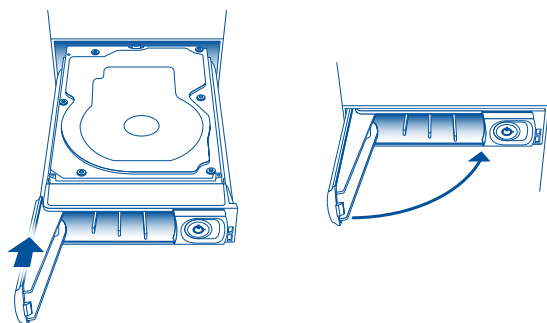
1. Open the cover door. Slide the disk tray lock to the right to release the handle.
2. Pull the tray out by the handle.



3. Slide the disk into the disk tray.
4. Flip the tray over and use the three supplied screws to secure the disk into the tray.

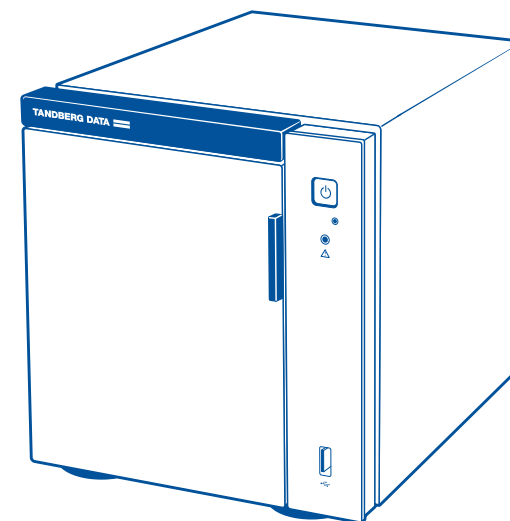


5. Insert the disk tray into the empty slot.
6. Close the handle to secure the disk tray into the slot.



BizNAS™ D400 series

**QUICK
START**



Registration Code



Tips for a Successful Setup

Ensure that you have:

- A local area network that is up and running.
- An available Ethernet port on your LAN switch or router.
- Access to the Internet from a computer connected to the LAN.

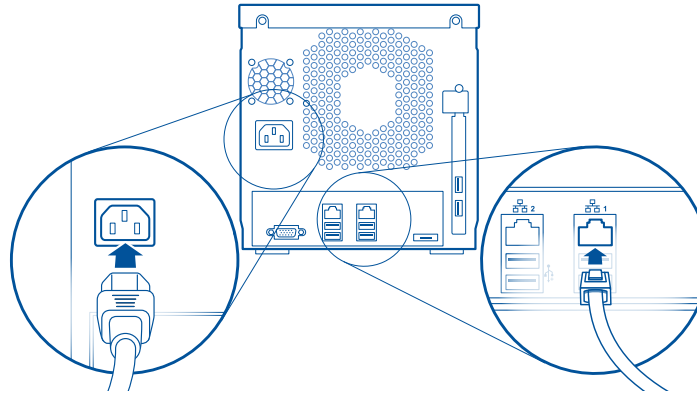
Note: The BizNAS D400 series retrieves its IP address and other network addressing automatically via DHCP. After you have accessed the Tandberg Data BizNAS Information Center, you can change to static network addressing, if desired.



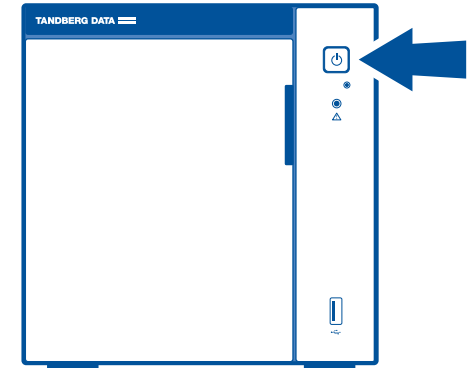
If your NAS shipped without disks, refer to the back of this Quick Start Guide to install one or more disks before you setup your NAS.

1 Connect Network and Power Cables

- Connect the supplied Ethernet cable to an Ethernet port on the NAS. Connect the other end of the cable to an Ethernet port on a switch or router.
- Connect the supplied power cable that is appropriate for your region to the NAS. Plug the power cord into an electrical outlet.



2 Turn Power On

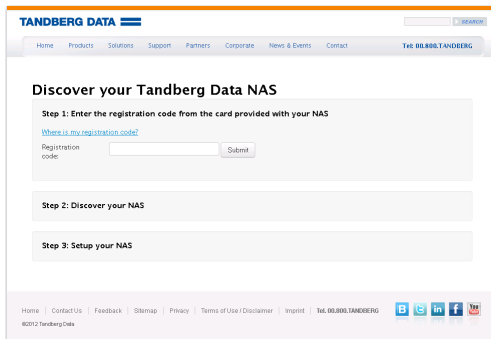


3 Discover your NAS

- From a computer on the same network as the NAS, type <http://findmynas.tandbergdata.com> in a web browser.

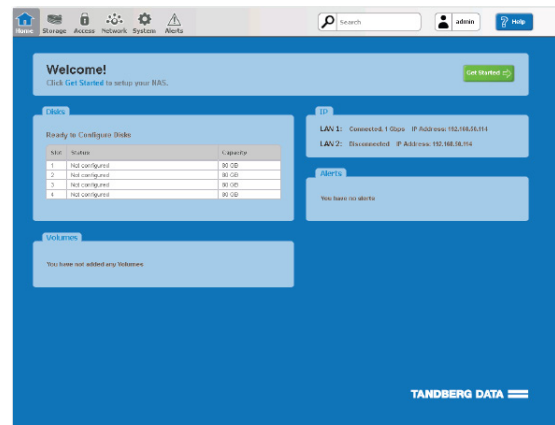
The NAS Discovery page opens.

- Type your NAS registration code, which is located on the front cover of this Quick Start Guide.
- Click **Submit**.



4 Launch the Information Center

Click the NAS IP address link in Step 3 of the NAS Discovery page to launch the Tandberg Data BizNAS Information Center.



5 Configure your NAS

Click **Get Started** from the BizNAS Information Center Home page to begin the NAS setup process.

Basic NAS setup involves three main steps:

1. Configuring disks.
2. Creating storage volumes.
3. Creating shared folders.

Note: You can add volumes and shared folders during disk configuration.

