

RDX QuikStation™

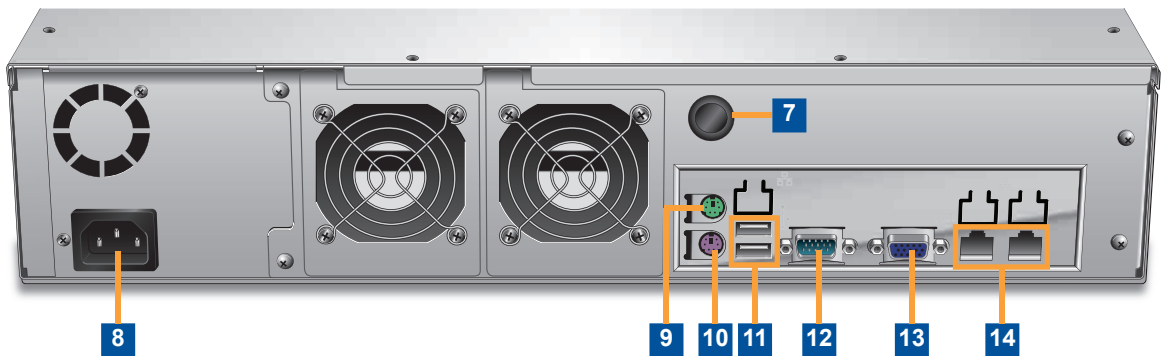
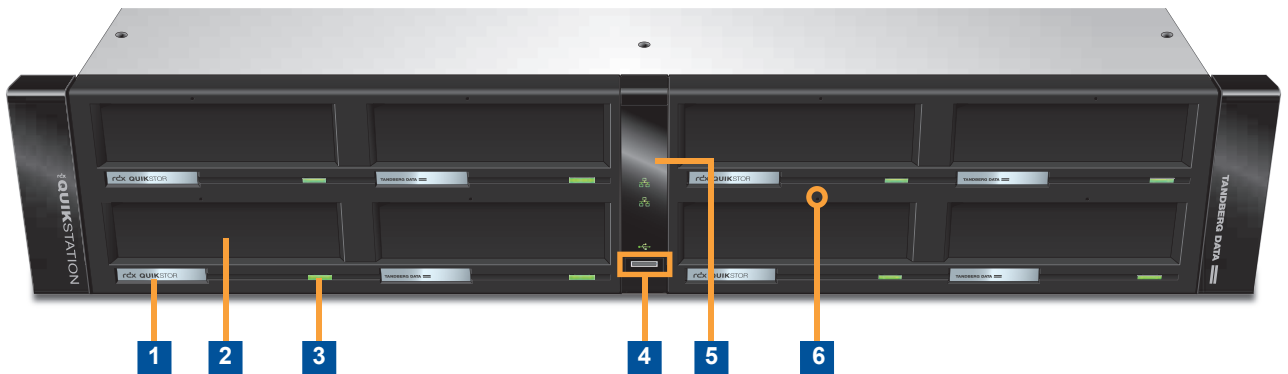
**QUICK
START**



WHAT'S IN THE BOX?



1. RDX QuikStation
2. North American Region Power Cord
3. European Region Power Cord
4. Ethernet Cables (2 each)
5. End Cap Covers
6. USB Flash Drive
7. Rail Extension Brackets (2 each)
8. Washers for Rackmount Kit (8 each)
9. Hardware Pack for Inner Rails
10. Hardware Pack for Outer Rails
11. Rackmount Outer Rails (2 each)
12. Rackmount Inner Rails (2 each)
13. Quick Start Guide
14. Rackmount Instructions
15. SecureService Pack (not shown)



- | | | | |
|---|--|----|---------------------------------|
| 1 | RDX LCD panel (8 each) | 8 | Power connector |
| 2 | RDX dock (8 each) | 9 | Mouse connector (green) |
| 3 | RDX cartridge eject button (8 each) | 10 | Keyboard connector (purple) |
| 4 | USB 2.0 port – used for configuration and diagnostic purposes | 11 | USB 2.0 ports (2 each) |
| 5 | LED panel – displays indicators for network, USB connection, and system health | 12 | Serial connector |
| 6 | Emergency-eject keyhole (8 each) | 13 | VGA connector |
| 7 | Power button | 14 | Gigabit Ethernet ports (2 each) |

BEFORE YOU BEGIN

For all host computers that will be backed up by the RDX QuikStation, verify that the host computer OS has iSCSI initiator software installed.

Windows

iSCSI initiators are included with Windows Server 2008 and later. If necessary, download and install the appropriate iSCSI initiator from the Microsoft web site or from a third-party vendor.

Linux

iSCSI initiators are included with most Linux operating systems. If necessary, download and install the appropriate iSCSI initiator from the Linux OS manufacturer's web site or from a third-party vendor.

Macintosh

Macintosh systems require the installation of a third-party iSCSI initiator. We recommend that you download and install an iSCSI initiator that has been tested or recommended for use with your chosen backup application.

1 Unpack and Rackmount the Unit

- Verify all items are included in the accessory kit. (See *What's in the Box?* section.)
- Keep the packing materials and box in case you need to ship the unit later.
- Locate an appropriate area for the unit that has clearance for adequate ventilation, minimal dust, and an appropriate power source.
- Follow the rackmount instructions provided in the accessory kit to install the unit in a rack.

2 Connect Network and Power Cables

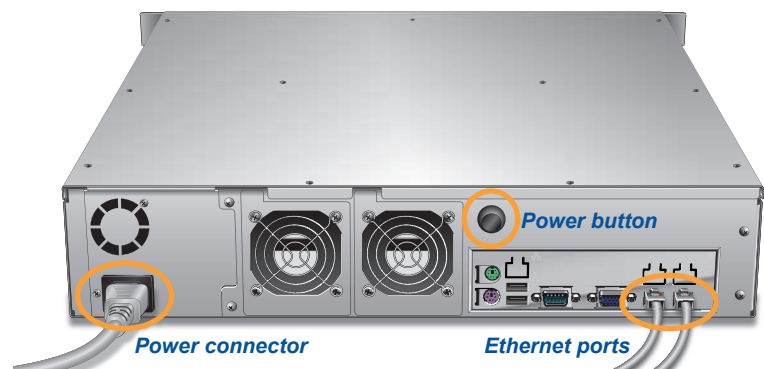
- Connect one or two RDX QuikStation ethernet network ports to ethernet network ports on a switch, hub, or router.

Note: Two network ports are recommended for failover protection.

- Connect the power cord that is appropriate for your region to the RDX QuikStation.
- Turn the power on by pressing the black power button that is located on the back of the RDX QuikStation.

Note: Once the unit is powered on, all eight LCD panels will alternately display the firmware level, system name, DHCP status, and IP address. This information continues to display until you log on to the Remote Management Console and configure the logical device type for the QuikStation.

- Verify that a valid IP address is displayed on the LCD panels. If not, you must manually configure the IP address for the RDX QuikStation. Refer to the "Configuring Network Information" section in the *RDX QuikStation Product Manual* for instructions on how to manually configure the IP address.



3

Connect to Remote Management Console

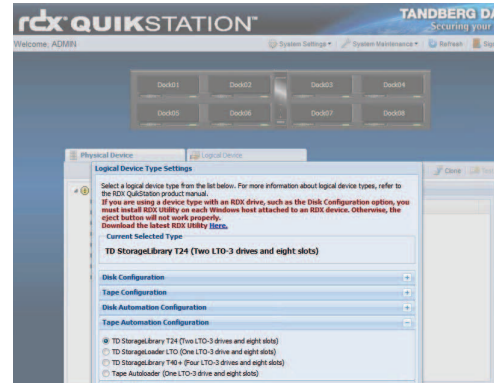
You can connect to the RDX QuikStation Remote Management Console from any computer on the same network as the RDX QuikStation. The computer can run on Windows, Linux, and Macintosh operating systems.

To connect to the RDX QuikStation Remote Management Console:

- Obtain the RDX QuikStation IP address from the unit's front LCD panels.
- From a network host, type the RDX QuikStation IP address in a web browser: `http://<RDX QuikStation IP address>`
- Sign in to the Console. The default user name is **Admin** and the default password is **Admin!**.

Note: The password is case sensitive.

The Remote Management Console opens.



4

Configure the RDX QuikStation

Logical Device Type

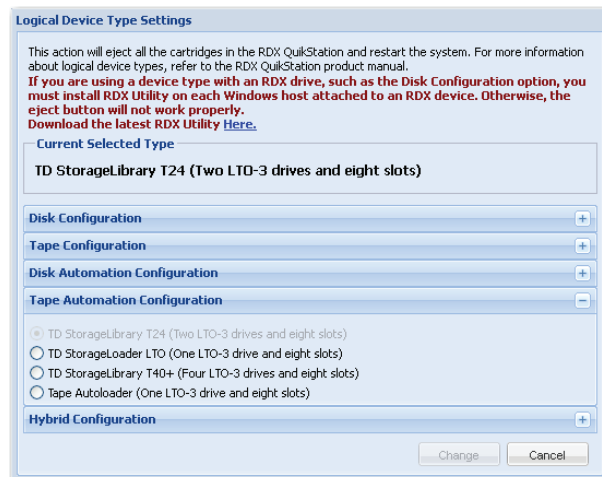
You can configure your RDX QuikStation in a variety of ways. Logical device configurations are available for disk, tape, disk automation, tape automation, or a hybrid configuration of virtual storage library and disk. Refer to the *RDX QuikStation Product Manual* for more information.

To configure the logical device type:

- Select the device type from the dialog window that opens when you first log on to the Remote Management Console.
- Click **OK**.

The system restarts. When finished, the Remote Management Console displays your chosen device configuration.

Note: If you have any RDX cartridges loaded into the RDX QuikStation, the system will eject the cartridges when it restarts.



System Settings

Refer to the table below to configure the following RDX QuikStation system settings. For more information, see the *RDX QuikStation Product Manual*.

Setting	Purpose	Where to Find
Date and Time	Set the date and time to your time zone in order to receive accurate system and troubleshooting information.	From the main menu bar in the Remote Management Console, go to System Settings → Date/Time.
Network Information	Tandberg Data recommends that you assign a static IP address to prevent inadvertent IP address changes of the iSCSI target. You can also configure optional DNS server addressing information.	From the main menu bar in the Remote Management Console, go to System Settings → Network. The RDX QuikStation will automatically reboot after you have made your network changes.
Email Notifications	A valid email address is needed for logging, error reporting, and emergency password recovery.	From the main menu bar in the Remote Management Console, go to System Settings → Notification.

In iSCSI terminology, a host computer is referred to as an “initiator” and the storage device it connects to as the iSCSI “target.” The following instructions describe how to connect your network host computers via iSCSI to the RDX QuikStation in Windows Server 2008 R2.

For other operating system environments, refer to your OS user documentation or your iSCSI product documentation on how to establish an iSCSI initiator target.

Note: The host computers that you wish to connect to the RDX QuikStation must reside on the same network as the RDX QuikStation.

To establish an iSCSI connection:

- Open Microsoft iSCSI Initiator and click the Discovery tab.
- Click **Discover Portal...** (Your version of iSCSI initiator may use **Add** depending on your Windows OS.)
- In the “Discover Target Portal” dialog window, enter the IP address for the RDX QuikStation. Click **OK**.
- Click the Targets tab.

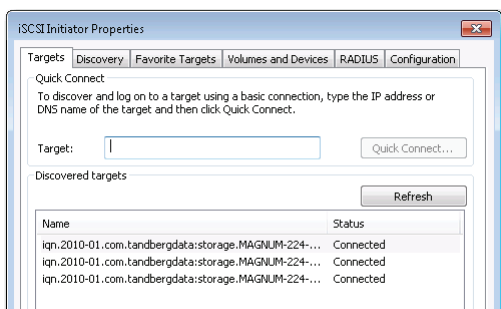
Depending on how you configured the logical device type for the QuikStation in Step 5, you will see two to eight iSCSI targets.

- Select an iSCSI target name (IQN). Click **Connect**.

The “Connect to Target” dialog window opens.

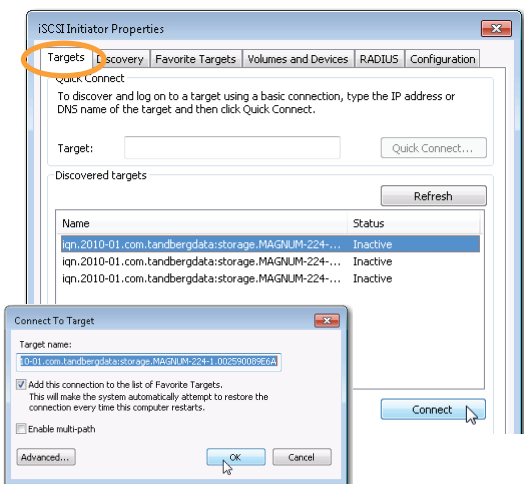
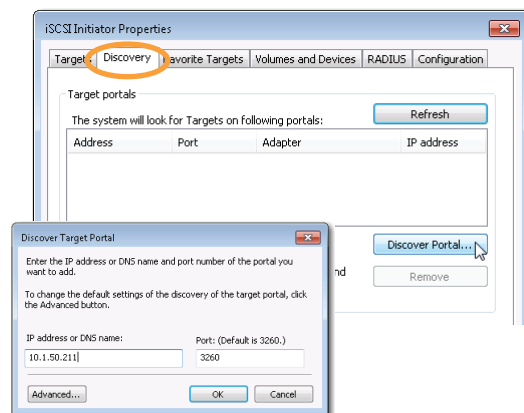
- Select the “Add this connection to the list of Favorite Targets” checkbox. Click **OK**.
- Repeat this connection process for each iSCSI target that is displayed in the Discovered Targets section of the dialog window.

You have successfully connected the host computer to the RDX QuikStation’s iSCSI targets when the iSCSI targets display as “connected,” as shown below.



Important: Tandberg Data recommends that you disconnect all iSCSI initiators before you shutdown or restart the RDX QuikStation for any reason.

Note: For information on setting iSCSI security, see the *RDX QuikStation Product Manual*, or refer to your iSCSI initiator product documentation.



Screenshots reflect Windows Server 2008 R2. Your iSCSI initiator interface may differ slightly depending on your Windows OS.

6 Prepare for and Perform a Backup

- Insert RDX cartridges (sold separately) into the QuikStation’s RDX slots. Press the cartridges in until they lock in place.
- If you haven’t already done so, install a backup application. Software compatibility information is available online at <http://www.tandbergdata.com>.
- Launch and configure your backup application software to perform a backup. For questions regarding software installation, configuration, and operation, refer to your backup software product documentation or contact your software provider.

Note (applicable to tape library logical device types only): By default, the RDX QuikStation imports all inserted RDX cartridges, eliminating the need to perform import operations for each cartridge in your backup application. If needed, go to the Remote Management Console’s System Settings → Advanced Options to enable Import/Export (IE) slot functionality.

For more information about IE slot management, see the *RDX QuikStation Product Manual*.

TECHNICAL SUPPORT

Visit the Support section of the Tandberg Data web site (<http://www.tandbergdata.com>) for the following:

- Driver, firmware, and software updates
- Knowledge base articles
- Troubleshooting information
- Product documentation
- Product warranty and registration
- Email and phone technical support

Make a note of your Product Serial number here

Model No. RMN-A-05-10

Serial No.

Part No. 98900-RDX

Additional RDX Cartridges

To purchase RDX cartridges, contact your Tandberg Data Partner, or contact Sales via the Tandberg Data web site at <http://www.tandbergdata.com>.

Power Ratings

AC Input Voltage	100-240 VAC
Rated Input Current	2,0 - 1,0A
Rated Input Frequency	50/60 Hz

Safety Precautions



Be aware of the locations of the power on/off switch on the RDX QuikStation chassis as well as the room's emergency power-off switch, disconnection switch, or electrical outlet. If an electrical accident occurs, you can then quickly remove power from the system.

The RDX QuikStation is intended for use when mounted in a standard rack. It may be used on a shelf or table top, but proper care should be taken to keep the area around the unit free of clutter to ensure proper ventilation.

The interior of the unit is intended for factory use only. Other than replacing fans or RDX cartridges, users should not attempt to service the unit. In the event that one of the fans is removed for servicing, do not insert hands, fingers, or any foreign object into the space intended for the fan. Be extra cautious around spinning fan blades.

When working around exposed electrical circuits, another person who is familiar with the power-off controls should be nearby to switch off power if necessary.

The power supply cord must include a grounded plug and must be plugged into a grounded electrical outlet.



Electrostatic discharge is generated by two objects with different electrical charges coming into contact with each other. An electrical discharge is created to neutralize this difference, which can damage electrical components and printed circuit boards. The following measures are generally sufficient to neutralize this difference *before* contact is made to protect your equipment from ESD:

- Use a grounded wrist strap designed to prevent static discharge.
- Keep all components and printed circuit boards (PCBs) in their antistatic bags until ready for use.
- Touch a grounded metal object before removing any board from its antistatic bag.

Related Documentation

For additional information about the RDX QuikStation, refer to the following publications available from the Support section of the Tandberg Data web site (<http://www.tandbergdata.com>):

- *RDX QuikStation Product Manual, Part Number 1019786*
- *Field Instruction: Installing the RDX QuikStation in a Rack, Part Number 1019782*

©2011 Tandberg Data. All rights reserved. RDX QuikStation is a trademark of Tandberg Data. RDX is a registered trademark of Tandberg Data S.a.r.l. All other trademarks are the property of their respective owners.



P/N 1019372 Rev. B

July 2011

Tandberg Data GmbH
Feldstrasse 81
44141 Dortmund, Germany

Agency Model Number: RMN-A-05-10

TANDBERG DATA 
Securing your Information

www.tandbergdata.com