

Replacement Instructions

This document describes how to remove and replace an RDX QuikStation from Overland-Tandberg.

WARNING: To reduce the risk of electric shock or damage to equipment, always remove any power cords while working with the unit.

WARNUNG: Um das Risiko eines elektrischen Schlags oder Schäden am Gerät zu vermeiden, ziehen Sie stets den Netzstecker, bevor Sie an der Einheit arbeiten.

AVERTISSEMENT: Pour réduire le risque de choc électrique ou endommagement de l'équipement, retirez toujours les cordons électriques en travaillant avec l'appareil.

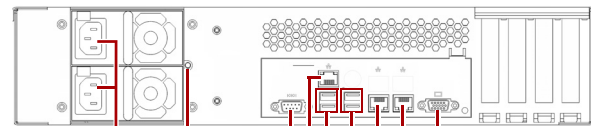
CAUTION: While working with the library, observe standard Electrostatic Discharge (ESD) precautions to prevent damage to micro-circuitry or static-sensitive devices.



Prepare the Unit

Power Off and Remove Cords and Cables

1. Power **off** the QuikStation.
2. Unplug the **power cords** (1).
3. Label and remove **all** the following:
 - Any attached USB devices
 - Ethernet cables
 - VGA cable (if attached)
 - Serial cable (if attached)



- | | |
|------------------------------------|-------------------------------------|
| 1 - AC Power plugs (on PSUs) | 6 - USB 3.0 Ports (2) |
| 2 - Power Supply Reset | 7 - 10 Gigabit Ethernet port (eth0) |
| 3 - Serial connector | 8 - 10 Gigabit Ethernet port (eth1) |
| 4 - Ethernet port - IPMI Interface | 9 - VGA connector |
| 5 - USB 2.0 Ports (2) | |



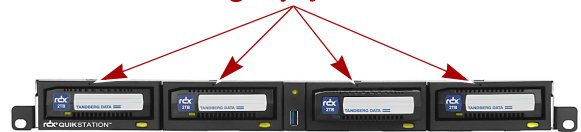
- | | |
|--------------------------------|--------------------------------|
| 1 - AC Power Plug | 6 - 1 Gb Ethernet Ports (eth0) |
| 2 - 1 Gb IPMI Port | 7 - 1 Gb Ethernet Ports (eth3) |
| 3 - USB 2.0 Port (USB1) | 8 - 1 Gb Ethernet Ports (eth1) |
| 4 - USB 2.0 Port (USB0) | 9 - VGA/Display Port |
| 5 - 1 Gb Ethernet Ports (eth2) | |

Remove All Media

Eject and label all the RDX cartridges so they can be inserted into the same drives on the new unit.

1. Using the supplied **RDX Ejection Pin** (or straighten paper clip), insert it in the hole above a drive with media.
2. Press inward until the **cartridge** ejects.
3. Label the cartridge with the **drive number** and set it aside.
4. Repeat **Steps 1–3** for all the remaining **cartridges**.

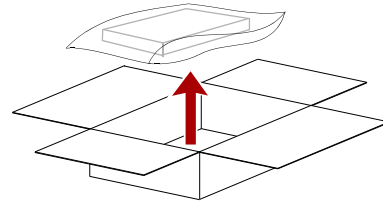
Emergency Eject Holes



Unpack the New QuikStation

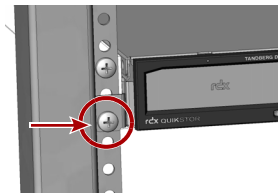
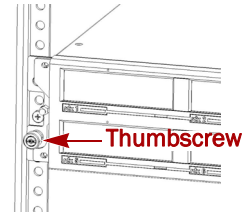
NOTE: If the temperature in the room where the module will be installed varies by 15° C (30° F) from the room where the boxed module was stored, allow it to acclimate to the surrounding environment for at least 12 hours before unpacking it.

1. Remove the **unit** from its box and set it on a secure surface.
2. Remove and save the **packaging materials and tape** from the unit.



Swap Out QuikStation in Rack

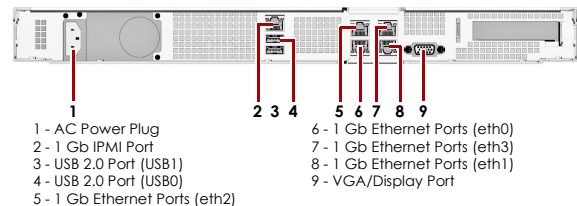
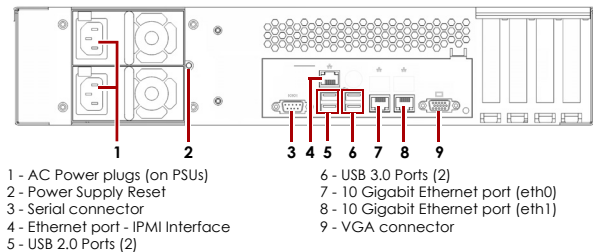
1. Disconnect the QuikStation right and left **brackets** from the rack.
 - QuikStation 4 – Remove and retain the two Phillips screws holding the brackets.
 - QuikStation 8 – Loosen the two captive thumbscrews on the brackets.
2. Carefully slide the unit off the **rails** and set it on a secure surface.
3. Lift and position the new QuikStation onto the **rails** and push it in until the front brackets touch the rack.
4. Verify that the unit is **level** and aligned with the appropriate rail holes.
5. Loosely secure the QuikStation **brackets** to the rack using the **screws/thumbscrews**.
6. Verify that the appliance is level, and tighten the **screws/ thumbscrews** evenly.



Connect the Cables and Cords

Reconnect the cables to the appropriate ports.

1. Connect **any** the following:
 - Ethernet cables
 - Any USB devices that were being used
 - VGA cable (if used)
 - Serial cable (if used)
2. Plug in the **power cords**.
3. Power **on** the QuikStation.



Obtain the IP Address

The IP address is obtained using a USB stick with a single MBR partition formatted with either FAT32 or NTFS.

1. Create an empty **network.info** file on a USB stick.
2. **Insert the stick** in the USB port on the front of the unit and wait at least 30 seconds for the network configuration to download to the **network.info** file.
3. Move the USB stick to a **host computer** and scan the updated **network.info** file to determine the IP address.



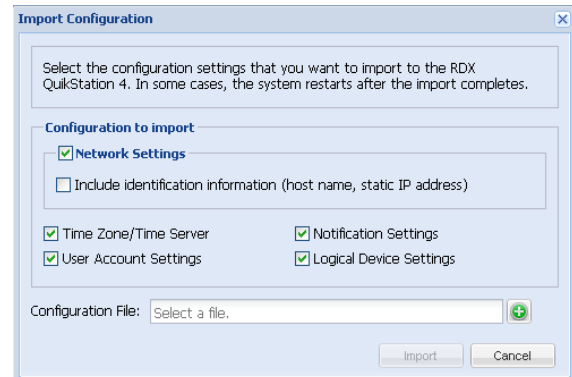
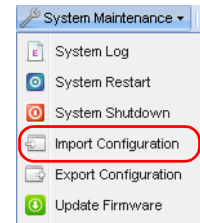
Complete the Installation

Import the Configuration Files

NOTE: If you do not have a saved copy of the configuration, you will have to reconfigure your QuikStation manually. Refer to the *QuikStation 4 & 8 Product Manual*.

Import the last previously saved QuikStation system configuration files:

1. From the Remote Management Console main menu, select **System Maintenance > Import Configuration**.
The Import Configuration dialog window opens.
2. Select the **network settings** you want to import.
By default, all configuration settings are selected.
3. Click the plus (+) icon to select the RDX QuikStation configuration file.
4. Click **Import**.
The system reboots. This process takes three minutes. When the reboot is complete, the Remote Management Console interface is active again. You do not have to sign in again to access the Console.



Reinsert Cartridges

The cartridges need to go back into the same drives that they were removed from in the old QuikStation.

1. Position an **RDX cartridge** at the same QuikStation RDX dock opening.
2. Slide the **cartridge** in until it locks in place.
3. Repeat [Steps 1–2](#) for **each** remaining cartridge.



Return Old Parts to Overland

If replacing a in-warranty appliance:

1. Place the **old QuikStation** in the anti-static bag and put it in the replacement part's box.
2. Use the existing **packing material** to secure it in the box.
3. Use an RMA to return the part to **Overland-Tandberg**.

For return shipping details and RMA number, go to: <http://docs.overlandstorage.com/return-instructions>.

