

Spare Bezel and OCP Installation Instructions

This document describes how to remove and replace a bezel and OCP in a NEO XL-Series library from Overland Storage.

WARNING: To reduce the risk of electric shock or damage to equipment, always remove any power cords while working with the unit.

WARNUNG: Um das Risiko eines elektrischen Schlags oder Schäden am Gerät zu vermeiden, ziehen Sie stets den Netzstecker, bevor Sie an der Einheit arbeiten.

AVERTISSEMENT: Pour réduire le risque de choc électrique ou endommagement de l'équipement, retirez toujours les cordons électriques en travaillant avec l'appareil.

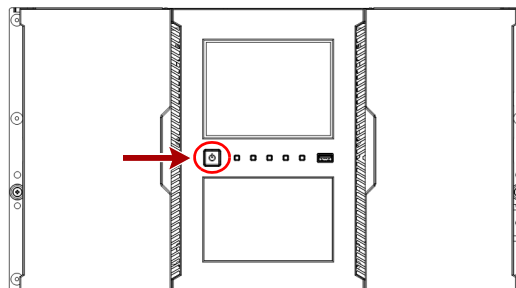
CAUTION: While working with the unit, observe standard Electrostatic Discharge (ESD) precautions to prevent damage to micro-circuitry or static-sensitive devices.



Prepare the Unit

Power Off the Library

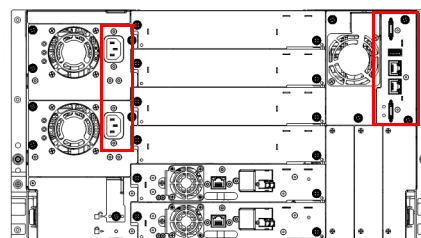
1. Verify that all host processes are **idle**.
2. Power off the library from the front panel by depressing the **power button** and holding it for 3 seconds.
If the library does not perform a soft shutdown, depress and hold the power button for 10 seconds.
3. Verify that the **robotic assembly** is in its parked position.



Disconnect Cables

1. From the module containing the failed controller, unplug the **AC power cables**.
2. Remove the **expansion interconnect cables** that connect to other modules, if present.
3. If present, remove the **Ethernet cables** and the **USB device**.

NOTE: An expansion module does not have Ethernet or USB ports.



Remove Cartridges

IMPORTANT: Overland recommends that you remove the cartridges to reduce the unit's weight prior to removal.

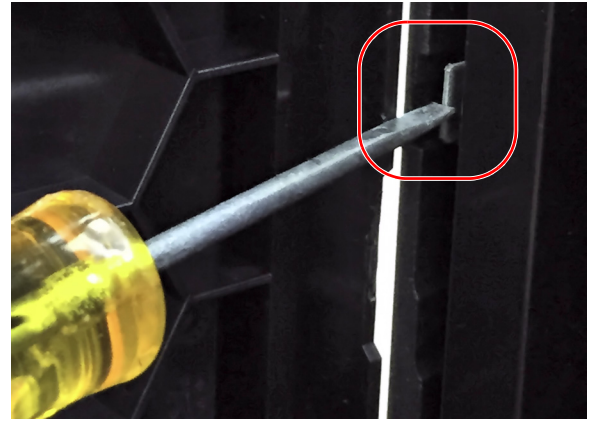
1. Open the left door.
2. Insert a small flat head screwdriver or Torx driver into the **left magazine release hole** and gently push the tab in.

CAUTION: Do not exert force once you encounter resistance. Doing so can damage the device.

3. Slowly **pull the magazine** free of the latch.
4. Remove cartridges from the magazine. Note which bay each cartridge was removed from.

Left Magazine

1	11	21	31
2	12	22	32
3	13	23	33
4	14	24	34
5	15	25	35
6	16	26	36
7	17	27	37
8	18	28	38
9	19	29	39
10	20	30	40



Right Magazine

41	51	61	71
42	52	62	72
43	53	63	73
44	54	64	74
45	55	65	75
46	56	66	76
47	57	67	77
48	58	68	78
49	59	69	79
50	60	70	80

5. Open the right door. If the right magazine is present, repeat [Steps 2–4](#) for the right magazine.

NOTE: Depending on the model, the optional right magazine may have 20 or 40 cartridges and may or may not have Mail Slots configured. The example provided shows all 80 slots with no mail slots configured.

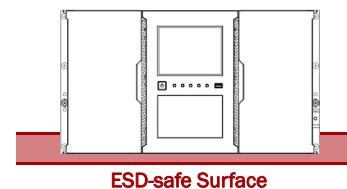
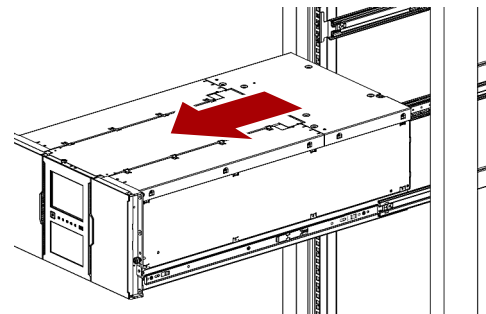
Remove Unit from Rack

WARNING: It is recommended that a mechanical lifter (or at least two people) be used during rack installation or removal to prevent injury.

WARNUNG: Um Verletzungen zu vermeiden, empfehlen wir zur Rack-Installation oder -Deinstallation die Nutzung einer mechanischen Hebehilfe (oder mindestens zwei Personen).

AVERTISSEMENT: Pour éviter toute blessure il est recommandé qu'un monte-charge (ou deux personnes au moins) soit utilisé lors de l'installation ou de l'enlèvement du support.

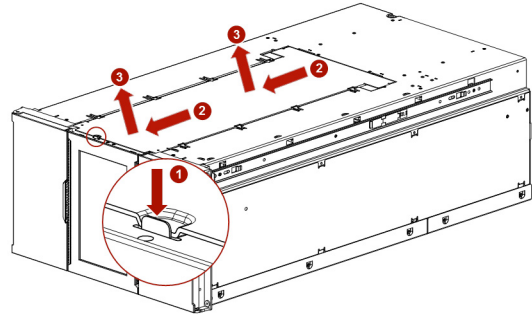
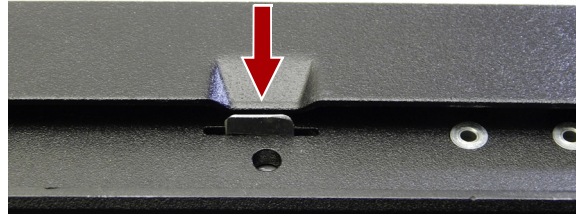
1. Release the **front captive screws** on the bottom of the library flanges that secure the library to the rack.
2. With a lifter positioned in front of the library, release the rail locks and slide the **chassis** out onto the lifter.
3. Place on an **ESD-safe** surface.



Replace Bezel and OCP

Remove the Cover

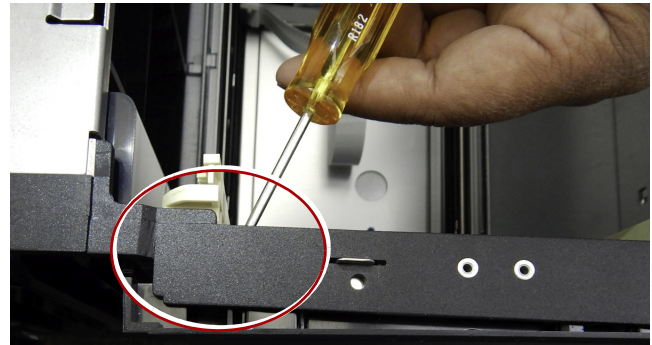
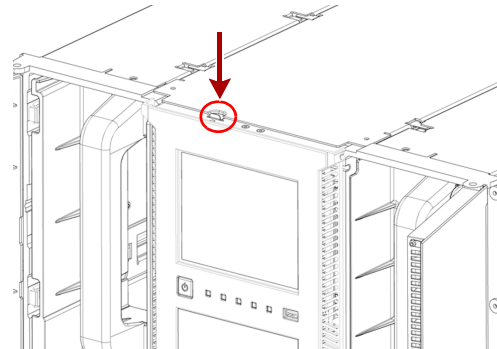
1. Push a small flat head or Torx screwdriver into the hole to retract the spring lock.
2. Slide the cover towards the front of the unit. The cover should pop free.
3. Remove the cover from the module.



Disconnect the Bezel

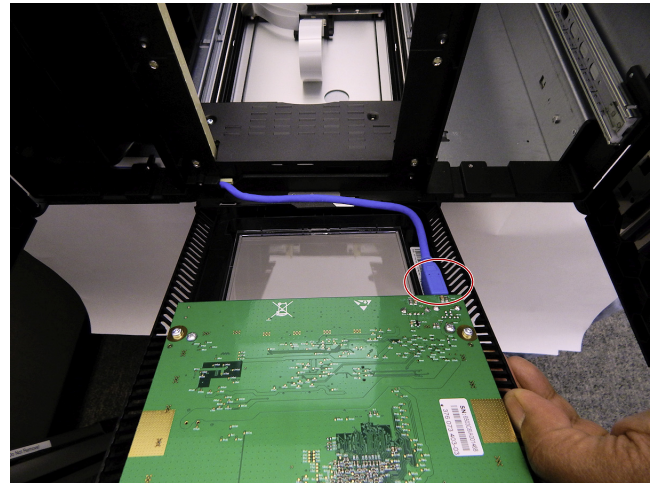
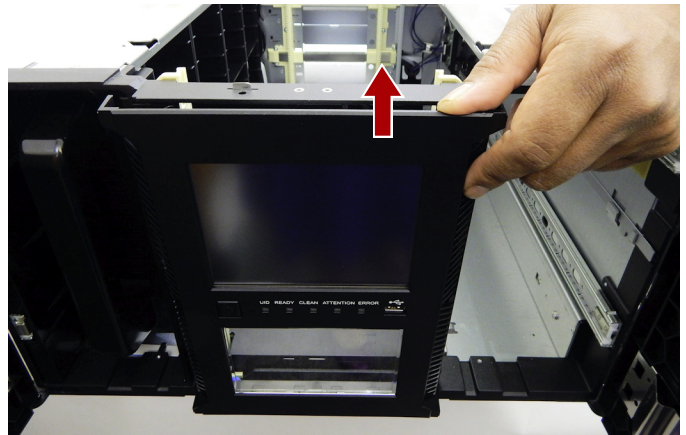
NOTE: Only the base module has an OCP.

1. Open both **magazine access doors**, if needed.
2. Identify the **bezel release holes** on each side of the bezel.
3. Insert a small flathead or Torx **screwdriver** in each bezel release hole.
Push the plastic lock gently to **disengage** the bezel from the chassis.
4. Repeat to release the other **bezel top corner**.



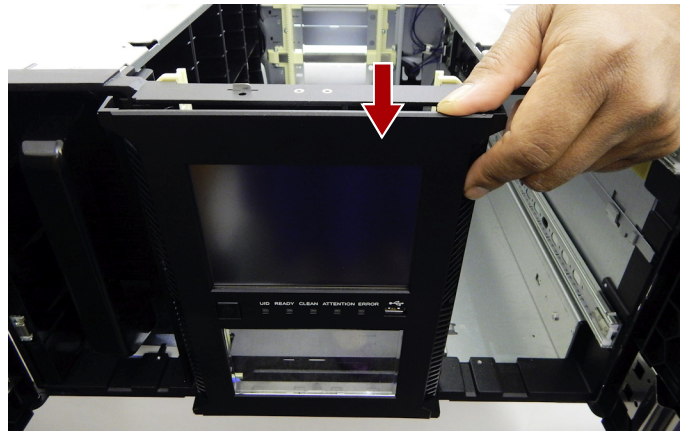
Remove the Bezel

1. Pull the bezel **up** to unseat it from the bottom brackets, then forward.
2. If removing a base module bezel, disconnect the **OCP cable**.
Set the old bezel aside for return to Overland.



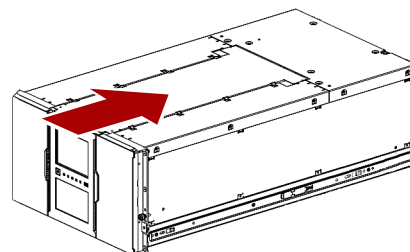
Install the Bezel

1. If installing a base module bezel, connect the **OCP cable** to the new OCP.
Ensure that the OCP cable is correctly routed in the channel behind the clear plastic window.
2. Seat the **bottom tabs** of the bezel into the slots in the bottom of the module.
3. Push the **bezel** up and snap the top corners into place.



Reinstall Library Top Cover

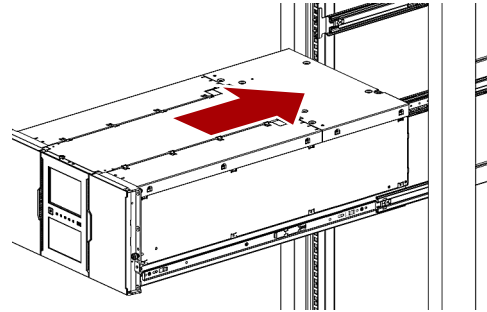
1. Push the left magazine back into the module until it locks into place.
2. Replace the top cover on the base module.
Align all tabs on the cover with the slots on the module, gently push it down, and then slide the cover toward the back of the module until the spring lock engages.



Reassemble the Unit

Reinstall Unit in Rack

1. Slide out the **middle** slide rails on both sides.
2. Using the mechanical lifter, position the **library** in front of the rack.
3. Insert the **library inner rails** into the rack rails and slide the library into the rack.
4. Secure the library to the rack with the **front captive screws** on the bottom of the library flanges.



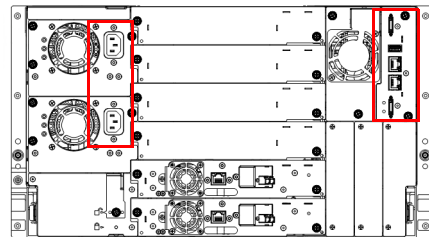
Reinstall Cartridges

1. Pull the **magazine** back out until fully extended.
2. Load the **tape cartridges** into the new magazine in the same location they were in previously.
Refer to the number on the assembly.
3. Push the **magazine handle** slowly until the magazine release latch snaps into place. The magazine locks into place after it is correctly installed.



Reconnect Cables

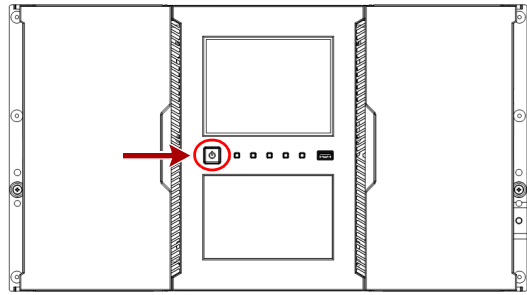
1. Reconnect the **Ethernet cables** and the **USB device**.
NOTE: An expansion module does not have Ethernet or USB ports.
2. Reconnect the **expansion interconnect cables** that connect to other modules.
3. Plug in the **AC power cables**.



Power On the Library

1. Press the **power button** on the base module for one to two seconds.

The **green LED** is shown as the library completes its Power-on Self-test (POST).



Return Old Parts to Overland

1. Place the **old part** in the anti-static bag and put it in the replacement part's box.
2. Use the existing **packing material** to secure it in the box.
3. Use an RMA to return the part to **Overland Storage**.

For return shipping details and RMA number, go to: <http://docs.overlandstorage.com/return-instructions>.

